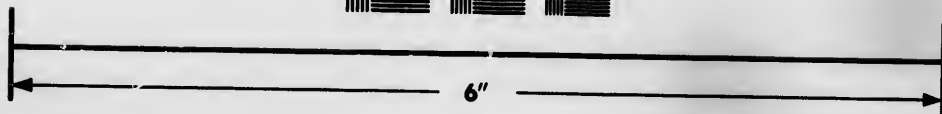
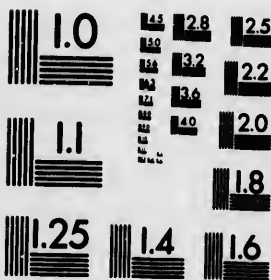
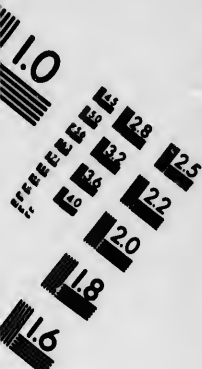


**IMAGE EVALUATION
TEST TARGET (MT-3)**



**Photographic
Sciences
Corporation**

23 WEST MAIN STREET
WEBSTER, N.Y. 14580
(716) 872-4503



**CIHM
Microfiche
Series
(Monographs)**

**ICMH
Collection de
microfiches
(monographies)**



Canadian Institute for Historical Microreproductions / Institut canadien de microreproductions historiques



© 1993

Technical and Bibliographic Notes / Notes techniques et bibliographiques

The Institute has attempted to obtain the best original copy available for filming. Features of this copy which may be bibliographically unique, which may alter any of the images in the reproduction, or which may significantly change the usual method of filming, are checked below.

L'Institut a microfilmé le meilleur exemplaire qu'il lui a été possible de se procurer. Les détails de cet exemplaire qui sont peut-être uniques du point de vue bibliographique, qui peuvent modifier une image reproduite, ou qui peuvent exiger une modification dans la méthode normale de filmage sont indiqués ci-dessous.

Coloured covers/
Couverture de couleur

Coloured pages/
Pages de couleur

Covers damaged/
Couverture endommagée

Pages damaged/
Pages endommagées

Covers restored and/or laminated/
Couverture restaurée et/ou pelliculée

Pages restored and/or laminated/
Pages restaurées et/ou pelliculées

Cover title missing/
Le titre de couverture manque

Pages discoloured, stained or foxed/
Pages décolorées, tachetées ou piquées

Coloured maps/
Cartes géographiques en couleur

Pages detached/
Pages détachées

Coloured ink (i.e. other than blue or black)/
Encre de couleur (i.e. autre que bleue ou noire)

Showthrough/
Transparence

Coloured plates and/or illustrations/
Planches et/ou illustrations en couleur

Quality of print varies/
Qualité inégale de l'impression

Bound with other material/
Relié avec d'autres documents

Continuous pagination/
Pagination continue

Tight binding may cause shadows or distortion along interior margin/
La reliure serrée peut causer de l'ombre ou de la distorsion le long de la marge intérieure

Includes index(es)/
Comprend un (des) index

Title on header taken from: /
Le titre de l'en-tête provient:

Blank leaves added during restoration may appear within the text. Whenever possible, these have been omitted from filming /
Il se peut que certaines pages blanches ajoutées lors d'une restauration apparaissent dans le texte, mais, lorsque cela était possible, ces pages n'ont pas été filmées.

Title page of issue/
Page de titre de la livraison

Caption of issue/
Titre de départ de la livraison

Masthead/
Générique (périodiques) de la livraison

Additional comments: /
Commentaires supplémentaires:

This item is filmed at the reduction ratio checked below /
Ce document est filmé au taux de réduction indiqué ci-dessous.

10X	14X	18X	22X	26X	30X
<input type="checkbox"/>	<input type="checkbox"/>	<input type="checkbox"/>	<input checked="" type="checkbox"/>	<input type="checkbox"/>	<input type="checkbox"/>
12X	16X	20X	24X	28X	32X

The copy filmed here has been reproduced thanks to the generosity of:

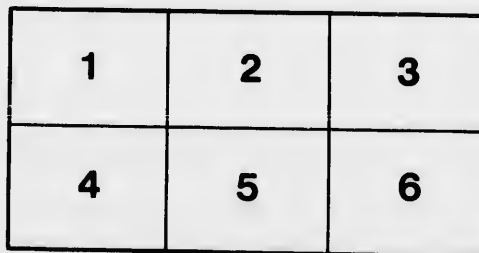
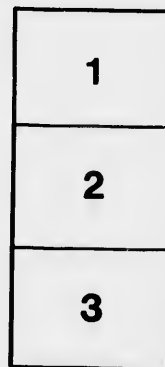
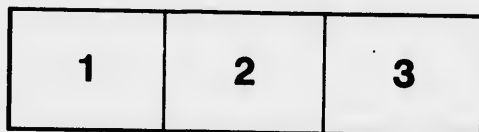
Bibliothèque nationale du Québec

The images appearing here are the best quality possible considering the condition and legibility of the original copy and in keeping with the filming contract specifications.

Original copies in printed paper covers are filmed beginning with the front cover and ending on the last page with a printed or illustrated impression, or the back cover when appropriate. All other original copies are filmed beginning on the first page with a printed or illustrated impression, and ending on the last page with a printed or illustrated impression.

The last recorded frame on each microfiche shall contain the symbol → (meaning "CONTINUED"), or the symbol ▼ (meaning "END"), whichever applies.

Maps, plates, charts, etc., may be filmed at different reduction ratios. Those too large to be entirely included in one exposure are filmed beginning in the upper left hand corner, left to right and top to bottom, as many frames as required. The following diagrams illustrate the method:



L'exemplaire filmé fut reproduit grâce à la générosité de:

Bibliothèque nationale du Québec

Les images suivantes ont été reproduites avec le plus grand soin, compte tenu de la condition et de la netteté de l'exemplaire filmé, et en conformité avec les conditions du contrat de filmage.

Les exemplaires originaux dont la couverture en papier est imprimée sont filmés en commençant par le premier plat et en terminant soit par la dernière page qui comporte une empreinte d'impression ou d'illustration, soit par le second plat, selon le cas. Tous les autres exemplaires originaux sont filmés en commençant par la première page qui comporte une empreinte d'impression ou d'illustration et en terminant par la dernière page qui comporte une telle empreinte.

Un des symboles suivants apparaît sur la dernière image de chaque microfiche, selon le cas: le symbole → signifie "A SUIVRE", le symbole ▼ signifie "FIN".

Les cartes, planches, tableaux, etc., peuvent être filmés à des taux de réduction différents. Lorsque le document est trop grand pour être reproduit en un seul cliché, il est filmé à partir de l'angle supérieur gauche, de gauche à droite, et de haut en bas, en prenant le nombre d'images nécessaire. Les diagrammes suivants illustrent la méthode.

u'il
cet
de vue
e
tion
és



32x

SECRETS

OF THE

Black Art

HAND-BOOK OF MAGIC, PUZZLES, &c.

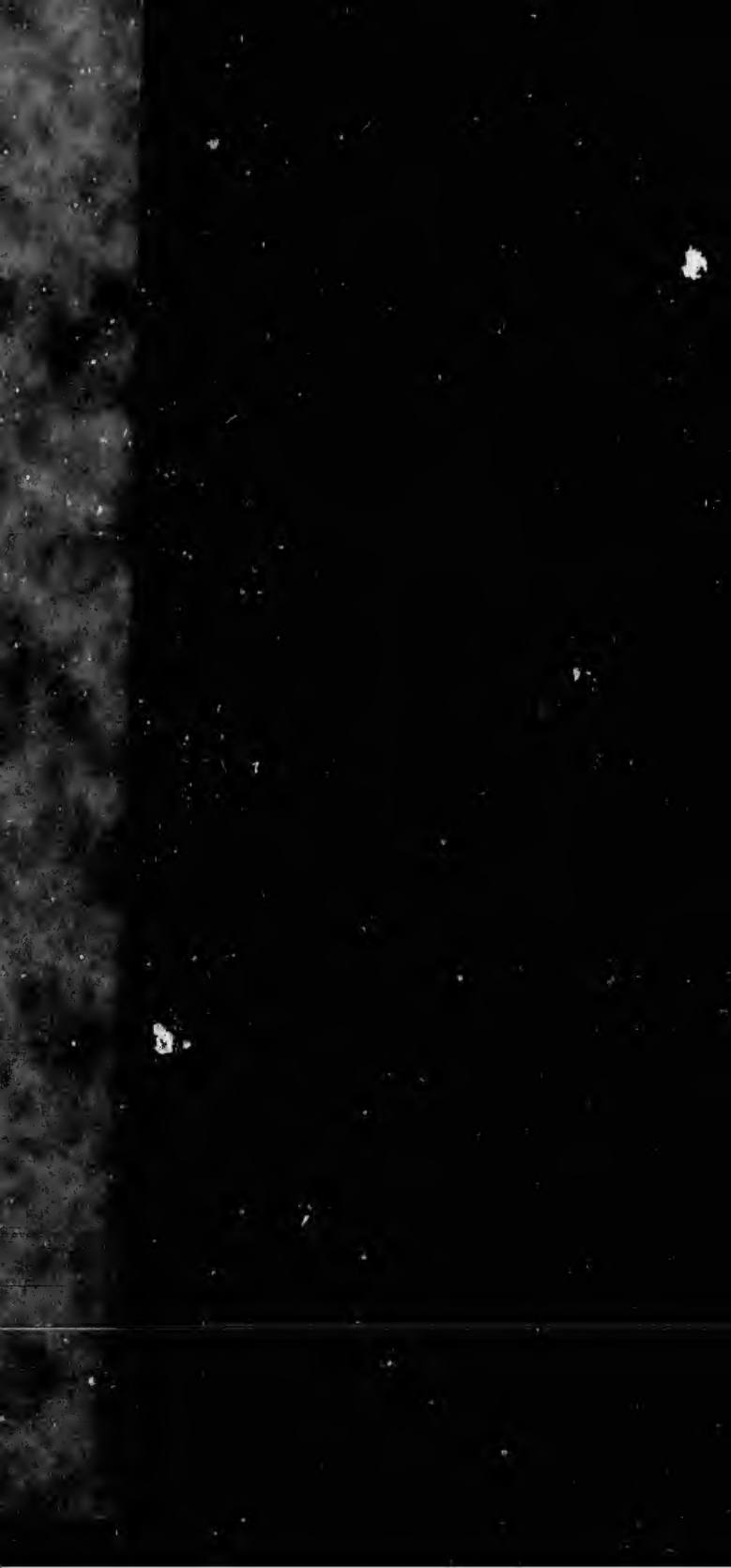
FOR

PARLOUR ENTERTAINMENTS.



THE LAST PRINT, 761 Craig Street, Montreal.

LAURENCE



LYMAN'S BAKING POWDER



FOR EASILY MAKING
Bread, Biscuits, Pan or Griddle Cakes,
Corn Bread or Johnny Cakes,
Pastry, &c., &c.

MANUFACTURED ONLY FROM THE PUREST MATERIALS.

ALWAYS FRESH AND WHOLESOME.

Put up neatly in convenient packages
for household use, from one pound down,
four sizes in all.

CAUTION!

See that the Trade Mark and the Signature of the firm

is on each package.

WHOLESALE BY
Lyman Sons & Co.,
382, 384 & 386 ST. PAUL ST.
MONTREAL.

Be
expe
this
to ad
a fev
In
myst
really
belie
about
ever,
tition
do w
The
may
succe
and in
cals a
from a
the ve
hold u
requir
catalo
Co., o
work
and th
items

DER

ING

Cakes,
es,

TERIALS.

OME.

ackages
down,

the firm

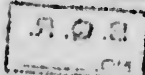
Co.,

SECRETS
OF THE
BLACK ART.

Before proceeding to describe the tricks and experiments which we have selected to form this little hand-book of parlor magic, we wish to address to our readers, and we hope students, a few words of general direction.

In the first place, many tricks owe their mystery to the fact that their performance is really so simple that spectators cannot but believe that there is something very wonderful about them. The tricks of sleight of hand, however, require careful practice and frequent repetition to insure success, and science has less to do with most of them than manual dexterity.

The very interesting chemical experiments may be performed with perfect safety and success, if the directions are strictly followed and intelligent attention exercised. The chemicals and apparatus required may be obtained from any druggist, though sometimes some of the vessels may be improvised by using household utensils, but to understand exactly what is required you should procure the illustrated catalogue published by Messrs. Lyman Sons & Co., of Montreal, Que. This very serviceable work has one hundred and thirty illustrations, and the price list comprises over six hundred items of apparatus and six hundred of chemical



NONPAREIL FLORIDA WATER.

FRAGRANT! REFRESHING!

No. 18.			No. 18 A.		
4	1	4	2	5	2
1		1	5		5
4	1	4	2	5	2

A DELIGHTFUL PERFUME,

EQUALLY SUITABLE FOR THE

TOILET, THE BATH AND THE SICK ROOM.

Introduced some years ago, it has been **STEADILY GAINING**
in popular favour in spite of keen competition
by rival brands.

BEAUTIFULLY PUT UP IN PINT AND HALF PINT BOTTLES

AT 50 CENTS AND 25 CENTS EACH.

FOR SALE RETAIL, BY ALL THE LEADING DRUGGISTS AND
FANCY GOODS DEALERS.

No. 17—Place the candle on his head, taking care
that there is no mirror in the room.

WHOLESALE BY
LYMAN SONS & CO.,
MONTREAL.

B. Q. R.
NO. 3998

GV
1559
L94

reagents. Any who wish a copy of the catalogue should enclose their address and ten cents in stamps to the firm mentioned above, when it will be promptly mailed to them.

As part of the paraphernalia of the amateur magician, he should provide himself with a magic wand; any rod of moderate length and thickness, say three feet long and one-half or three-quarters of an inch thick, will answer the purpose; it should of course be straight, smooth, and black in colour, and may be ornamented with gold or silver paper or bronze. If skillfully handled it may prove quite useful occasionally in distracting the attention of the audience at critical parts of the performance. The operator should be able to handle it with equal grace with the left hand as with the right, so as to leave the right hand free when required.

The performer must, of course, proceed with the dignity of manner and gravity of appearance appropriate to the solemnity of the occasion.

No. 1.

THE MAGIC CUPS.

Procure two tin cups without handles, with quite plain, straight sides, with bottoms sunk a quarter of an inch; on the underside of the bottoms spread some glue and completely cover the glue with some grain or bird seed, only see that the seed is not quite as high as the edge of the rim. When the glue is hard the cups are ready. When you begin the performance have ready a bag of the same kind of seed as you have glued on the cups. Set the cups on a

table and ask for two hats high enough to cover them, then hold up the cups, so that the audience can see only the inside, to show that they are empty. Put one cup into the bag and appear to fill it and take it out bottom up, turning it enough to show the seed. Cover it with one of the hats, turning it right side up as you do so. Then cover the other cup with the other hat at the same time turning it wrong side up. Then wave your wand, repeat some spell or Latin word, take off the hats, show the cups, and you can let the audience guess whether you changed the seed or changed the cups. The audience, of course, must not be allowed to handle the cups, or to come close to the table.

THE NONPAREIL FLORIDA WATER IS A DELIGHTFUL AND REFRESHING PERFUME.

No. 2.

What can you place in a man's right hand which he cannot take in his left?

(Answer to No. 2 on page 14.)

ELLIOT'S DENTIFRICE REMOVES TARTAR FROM THE TEETH.

No. 3.

MAGICAL COLOUR CHANGES.

Yellow to Red and Green to Blue.

Get one-quarter of an ounce of solution of acetate of copper, eight ounces of solution of prussiate of potash and eight ounces of hartshorn. In a beaker (fig. 26, Lyman's list) or a filter jar (fig. 294, Lyman's list) put the solution of potash, and in

LYMAN'S GENUINE FLAVOURING EXTRACTS.

The popular Standard Essences for Flavoring
ICE CREAMS, JELLIES, CUSTARDS, &c.
 Warranted perfectly pure, and FREE from those POISONOUS
 OILS and ACIDS which many such preparations contain,
 and which are so highly INJURIOUS.

No. 18 B.			No. 18 C.		
1	7	1	0	9	0
7		7	9		9
1	7	1	0	9	0

NOTICE :

THESE EXTRACTS ARE NEVER DILUTED on account of increased cost, but are ALWAYS kept up to one UNVARYING UNIFORM STRENGTH, and one bottle will go further than two of those "cheap and nasty" kinds, which their makers are ashamed to put their names to.

See that EACH LABEL Bears the NAME of the FIRM.

For Sale Retail by Grocers and General Storekeepers
WHOLESALE BY
LYMAN SONS & CO.
MONTREAL.

a second the hartshorn ; then take the solution of copper in a one-half ounce graduated measure (fig. 271, Lyman's list) and into the first beaker pour one-eighth ounce, and into the second the remainder, when a deep mahogany red and a brilliant blue will be obtained.

LYMAN'S FLAVOURING EXTRACTS ARE MADE FROM
THE PUREST MATERIALS.

No. 4.

How can you draw a circle round a person placed in the middle of a room so that he cannot jump out of it, though his legs are free?

(Answer to No. 4 on page 14.)

For Rheumatism take internally one-half to two teaspoonfuls of Lyman's Pain Reliever, in a little ginger syrup or sweetened water twice a day, and use freely as a liniment, rubbing it vigorously into the part affected.

No. 5.

THE "TWENTY-CENT TRICK."

Borrow twenty one-cent pieces from the company and show them on a plate, and have them counted while on the plate by the audience ; but keep concealed in your left hand five other cents.

Next empty the cents from the plate into the left hand, and hand the twenty-five to one of the audience to hold for you, impressing upon him the necessity of shutting them up firmly at once in one hand so that you may not spirit any away from him without his knowledge. Then get five of the cents back from him when he will still have twenty. while supposing he only has

fifteen. Now slip another extra cent into the palm of your right hand, add the five to it and give the six to another person to hold, making him close his hand firmly at once, so as not to count the pieces. Then get one back from him, palm it in the right hand and pretend to place it in the left. Then strike the left hand with the magic wand and bid the coin to pass into the hand of the one holding the five, but as he supposes four cents: bid him open his hand and count them, when he will find five, greatly to every one's surprise. Take the five from him and pretend to pass them into the left hand but taking care to slip them into some place of concealment (say a hidden card-board box with bran in it), strike the closed left hand as before and command the coins to pass into the hand of the one who supposes he is only holding fifteen. Then bid him open his hand and count them, when, of course, he will find twenty, and the success of your trick and the wonder of the spectators will be equally great.

Doctors, they say, never swallow their own medicine, but the Lyman's used their Concentrated Extract of Coffee for years before they offered it for sale.

No. 6.

Place a coin in each hand, extend the arms to their full length in opposite directions, and then bring both coins into the same hand without altering the relative position of the arms to each other or the rest of your body.

(Answer to No. 5 on page 17.)

THE NONPAREIL FLORIDA WATER IS BEAUTIFULLY
PUT UP.

LYMAN'S INDELIBLE MARKING INK

For Marking Linen, Cotton or Silk.

No. 18 D.

5	0	4
0		0
4	0	5

WARRANTED SUPERIOR to any Ink in present use for the PERMANENCY of it's mark, and the FREEDOM with which it flows from the pen. ●

This Composition requires **NO PREVIOUS PREPARATION**, (unless the fabric is unusually thin), and may be used in any weather.

No. 19—Commenced with the sixth from the landlord.

The writing at first is pale, but afterwards becomes
AN INDELIBLE BLACK.

MANUFACTURED ONLY BY
LYMAN SONS & CO.
MONTREAL.

No. 7.

To cause an egg sunk in water to float by adding more water.

Take a filter glass (fig. 294, Lyman's list) large enough to hold three or four pints. Just before the experiment take a 40 ounce graduate (fig. 271) pour into it 20 ounces clear water, then place in the graduate a thistle funnel (fig. No. 236, Lyman's list) letting the small end rest on the bottom, pour quickly into the funnel 20 ounces of brine (saturated solution of salt.) Then place the filter glass on a table where it can be easily seen, and put into it a fresh egg; pour in 20 ounces from the graduate through the funnel taking care not to stir up the brine at the bottom of the graduate. The egg will now be lying at the bottom of the water; you may then ask one of the company to pour the rest of the contents of the measure through the funnel while you make mystic passes or flourishes with your wand. The egg will gradually rise till the whole of the brine is in, when it will rest in the middle of the liquid.

When friends drop in for a short visit, do not ply them with spirits, but give them a cup of first-rate coffee; you can make it as easily as you can open a bottle of gin, if you use Lyman's Concentrated Extract of Coffee.

No. 8.

If you cut thirty yards of cloth into one yard pieces, and cut one yard every day; how long will it take?

(Answer to No. 8 on page 17.)

ELLIOT'S DENTIFRICE SWEETENS THE BREATH.

No. 9.**MAGICAL COLOUR CHANGES***By the Mixture of Colourless Liquids.*

Take eight ounces solution of Iodide of Potassium (5 grains to the ounce) and four ounces solution of corrosive sublimate (2 grains to the ounce). Into a hydrometer jar (fig. 285, Lyman's list) pour gradually in varying proportions the two solutions, when you will have some of the strangest changes of color. The tints vary from canary to carnation and sometimes disappear. Burettes (figs. 80 and 82, Lyman's list) or pipettes (page 20, Lyman's list) are the best for dropping small quantities.

LYMAN'S FLAVOURING EXTRACTS GIVE THE MOST THOROUGH SATISFACTION.

No. 10.**DANCING BRAN.**

Support a pane of glass, previously warmed upon two books, one at each end, and place some bran underneath; then rub the upper side of the glass with a silk handkerchief or a piece of flannel, and the bran will dance up and down underneath.

A BOTTLE OF NONPAREIL FLORIDA WATER MAKES A MOST ATTRACTIVE TOILET ARTICLE.

No. 11.**THE VANISHING COIN.**

Prepare for the trick by sticking a piece of white wax on the nail of your middle finger; have some one lay a five or ten cent piece in the

LYMAN'S

UNIVERSAL

PAIN RELIEVER

Is a most valuable Remedy for the Relief of Pain,
whether Internal, or External.

Being manufactured from **pure drugs**, which are **entirely vegetable** in character, and containing **no injurious ingredient** whatever, it may be used with perfect safety. It is mild enough for **INTERNAL ADMINISTRATION** in the prescribed doses, and yet powerful enough to be an **EFFECTIVE LINIMENT** for **EXTERNAL APPLICATION**.

No. 12—By seating himself in the other's lap.

When taken internally, it promptly relieves **Cramps** or **Pain** in the **Stomach**, **Sick Headache**, **Sickness** at the **Stomach** or **Nausea**, **Colic**, **Summer Complaints**, **Diarrhoea**, **Cholera Morbus**, **Cholera Infantum**, **Indigestion**, **Dyspepsia**, **Dysentery**, &c., &c.

No. 15—Seven and one

Applied externally, it relieves **Neuralgic Affections**, **Cramps** in the **Legs**, **Sprains**, **Bruises**, **Chilblains**, **Frost Bites**, **Rheumatism**, **Tic Douloureux**, and all complaints requiring a stimulating liniment or embrocation.

Full Directions with each Bottle. **PRICE, 25 CENTS.**

WHOLESALE BY

LYMAN SONS & CO., - - MONTREAL.

NOTICE.—Some Medicine Dealers seem to claim that they have the **MONOPOLY** of using **PURE DRUGS** in the preparation of their remedies. The **HIGH STANDING** and **HONORABLE PAST RECORD** of the **LYMANS**, extending as it does over **MORE THAN THREE QUARTERS OF A CENTURY**, are a **SUFFICIENT GUARANTEE** of the **PURITY** and **EXCELLENCE** of anything bearing their name.

palm of your hand, having first turned back your cuffs to show that you do not send it up your sleeve. Then close your hand tightly, bringing the waxed nail firmly against the coin so as to make it stick. Then blow upon your hand and cry, "begone." Open your hand quickly, at the same time turning it so that the nails will be towards yourself and away from the company. You can then bring it back by reversing the process. Before returning the coin to its owner see that no wax is left sticking to it.

LYMAN'S EXTRACT OF COFFEE IS MOST
CONVENIENT.

No. 12.

How can a person without leaving the room seat himself where some one else in the room cannot possibly do so?

(Answer to No. 12 on page 11.)

ELLIOT'S DENTIFRICE PREVENTS DECAY OF THE
TEETH.

No. 13.

TO FILL TWO EMPTY BOTTLES WITH SMOKE.

Take two pint or quart flasks (fig. 221, Lyman's list) previously rinsed, one with hartshorn, the other with muriatic acid, bring the mouths together while pronouncing an incantation (a few words of "dog" Latin or bogus Arabic, abra-ka-dabra for instance) when a smoke will pervade both flasks.

For Summer Complaint or Diarrhoea take one teaspoonful of Lyman's Pain Reliever in a little sweetened water, and repeat the dose every half-hour until relief is obtained.

No. 14.

Pour a little clear water into a glass vessel (figs. 26, 39, 285, or 294,) and drop into it one or two small pieces of phosphuret of calcium, if possible in such a way that your doing so will not be noticed. Before adding the calcium, however, pass the glass around so that the company can examine and taste it if they wish, then secretly add the calcium, utter an incantation, wave your wand about the glass and in a short time flashes of fire will dart from the surface of the water, and terminate in rings of smoke which will ascend in regular succession.

LYMAN'S EXTRACT OF COFFEE IS MADE FROM THE
BEST BERRIES.

No. 15.

What two numbers multiplied together will produce seven?

(Answer to No. 15 on page 11.)

ELLIOT'S DENTIFRICE MAKES THE TEETH WHITE.

No. 16.**THE HANDKERCHIEF TRICK.**

Prepare a coin by sticking a piece of wax to one side; borrow a handkerchief and spread it on the table; take up the coin and show it, turning the clean side towards the audience, then place it in the centre of the handkerchief, with the waxed side up, and fold over one corner so as to cover it, pressing so as to make it stick, then fold over the other corners so as to wrap it

LYMAN'S

Concentrated



Concentrated

EXTRACT OF COFFEE

No. 2—His left elbow.

MADE FROM CHOICE SELECTED COFFEE,
FRESHLY ROASTED AND GROUND EXPRESSLY FOR
THIS PURPOSE.

is absolutely Unrivalled for Quality and Flavor,
and acknowledged THE BEST wherever used.

No. 4—Draw it round his body.

It is made upon SCIENTIFIC PRINCIPLES, all the aroma and finest qualities of the berry being retained, while the bitter principle contained in all other coffee is carefully excluded.

The process having been invented by an English Chemist of high standing, and requiring a special apparatus which have been patented at Ottawa, Messrs. LYMAN SONS & CO. acquired the patent at considerable expense, any one infringing their rights will be rigorously prosecuted.

For Sale by Grocers, Druggists and General Storekeepers,
IN ONE POUND, HALF POUND, AND QUARTER POUND

BOTTLES. TRIAL SIZE, 5 CENTS EACH.

WHOLESALE BY
LYMAN SONS & CO., MONTREAL.

up completely. Lift up the handkerchief and let it fall on the table to prove that the coin is still there; then with a quick dexterous movement seize the handkerchief by the corner where the coin is and shake it towards the audience and secure the coin in your hand at the same time. The coin will have disappeared and you can then pretend to take it from the underside of the table, and challenge them to find any hole either in the table or handkerchief.

LYMAN'S PROCESS FOR MAKING COFFEE EXTRACT
GIVES THE BEST YIELD.

No. 17.

How can a candle be placed in a room so that everyone there except one can see it, and that one shall not be blind-folded nor prevented from examining every part of the room, nor shall the candle be hidden?

(Answer to No. 17 on page 2.)

THE NONPAREIL FLORIDA WATER IS IN SEASON
ALL THE YEAR ROUND.

No. 18.

THE BLIND ABBOT AND THE TRUANT MONKS.

A monastery in which there were nine cells was occupied by a blind abbot and twenty-four monks, the abbot lodging in the centre cell and the monks in the side cells, three in each, forming a row of nine persons on each side of the building. The abbot suspected the monks

and often went round at night and counted them, when if he found nine in each row he was satisfied. How did the monks arrange themselves when one night four of them went out leaving still nine in each row?

(Answer to No. 18 on page 2.)

No. 18 A.

Next night the four came back and brought four visitors with them, how did they arrange so that counting visitors and all there were still only nine in each row?

(Answer to No. 18 A on page 2.)

No. 18 B.

The next night there were eight visitors, and the rows only amounted to nine each as before.

(Answer to No. 18 B on page 5.)

No. 18 C.

The next night there were four more visitors and still the same result.

(Answer to No. 18 C on page 5.)

No. 18 D.

Finally the twelve visitors went away and six monks with them, and yet the rows counted as before, and the abbot believed that no one had gone in or out all the while.

(Answer to No. 18 D on page 8.)

For Cholera Infantum give ten to thirty drops of Lyman's Pain Reliever in a little sweetened water or maple syrup.

LYMAN'S

Concentrated



Concentrated

EXTRACT OF COFFEE

No. 6—Place the coin on a table, then turn round and pick it up with the other hand.

MADE FROM CHOICE SELECTED COFFEE.

This Extract supplies a LONG FELT WANT. In domestic use it is a WONDERFUL CONVENIENCE. It can be used at any hour of the day or night, so long as there is any hot water in the house. Coffee can be made in a moment in any quantity required, from a cupful to a gallon, of the finest flavor and free from grounds, and no coffee pot is required. It enables travellers and sportsmen to take with them at least one home comfort. In short, it would take a volume to describe its full value and usefulness.

No. 8—Twenty-nine days.

For Sale by Grocers, Druggists and General Storekeepers,
IN ONE POUND, HALF POUND, AND QUARTER POUND
BOTTLES. TRIAL SIZE, 5 CENTS EACH.

WHOLESALE BY

LYMAN SONS & CO.
MONTREAL.

No. 19.**THE LANDLORD TRICKED.**

Twenty-one persons sat down to dinner at an inn, with the landlord at the head of the table. When dinner was finished it was resolved that one of the number should pay the whole score, to be decided as follows: Some one should count the company, and every seventh was to rise till all were counted out but one, who should pay the whole bill. The waiter was fixed upon to count, and, having a grudge against his master, made him pay. How did he proceed?

(Answer to No. 19 on page 8.)

LYMAN'S EXTRACT OF COFFEE IS RICH AND FULL
FLAVOURED.

No. 20.**SUB-AQUEOUS COMBUSTION.**

In a four ounce conical graduate or Hock wine glass pour three or four ounces clear water throw into it two or three pieces of phosphorous about the size of peas, and immediately cover them with 40 grains chlorate of potash; place in the glass a thistle funnel (fig. No. 236, Lyman's list) with the small end resting on the potash, and pour through it three drachms (liquid measure) of sulphuric acid. Flashes of fire will soon dart from under the surface of the liquid, when three or four small pieces of phosphuret of calcium should be added; the bottom of the vessel will become illuminated, and an emerald green stream of fire will pass through the fluid.

LYMAN'S EXTRACT OF COFFEE NEVER CHANGES IN
QUALITY.

No. 21.**FLAMING SUGAR.**

Prepare for this trick by having an ounce or two of powdered white sugar in a paper parcel, and a soup plate with an equal weight of chlorate of potash spread over the bottom, the plate to be kept out of sight till wanted. In a small dish concealed, but where you can easily touch it, have a little sulphuric acid. Unfold the paper and allow the sugar to be examined and tasted by the company; when it is returned to you take the soup plate and pour the sugar into it and mix the powders carefully without concussion. Then, while uttering an incantation manage to dip the end of your wand into the acid without being noticed, and then touch the powder, which will flash into a brilliant flame

COFFEE MADE FROM LYMAN'S EXTRACT NEVER
HAS ANY GROUND.

No. 22.**To get Fire from (apparently) Empty Tumblers.**

Take a cylindrical vessel of tin or glass, two feet high by 12 inches in diameter, and place in it a water bath (fig. No. 479, Lyman's list) filled with boiling water. Show that the tin is empty and nothing but hot water in the water bath, calling some one up to examine it and to try to set fire to the water. Take a glass or leaden one-half inch tube bent double like an irregular U tube (fig. No. 465, Lyman's list) one leg to come just above the water bath when the tube is set into the cylinder, while the other leg pass-

LYMAN'S
GENUINE
QUININE WINE,
THE GREAT INVIGORATING TONIC,

—FOR—

**Chronic and Pulmonary Catarrh, Chronic
 Diarrhoea, Scrofula, and every case of
 Direct Debility.**

ESPECIALLY EFFECTIVE

**In Obstinate Cutaneous Affections, and
 Certain Forms of Dyspepsia,**

LOSS OF APPETITE, &c., &c.

No. 23.

6	7	2
1	5	9
8	3	4

The Wonderful Curative Power of Quinine in all Intermittent and Periodic Diseases, Fever and Ague, Typhoid Fever, Malignant Scarlatina, Smallpox, &c., &c., is too well known to necessitate proof, being in every respect superior to the Cinchona Bark from which it is derived. The amount of its Highly Concentrated form, and Easy Assimilation, can be effectively administered in many cases when the powdered Cinchona could not be tolerated.

In Lyman's Quinine Wine the most valuable properties of the Cinchona Bark are secured in combination with a pure, rich and generous wine, valuable in all cases where the system requires to be invigorated and strengthened.

ing down the outside should extend about six inches below the cylinder like a syphon. Warm the tube, and as you take it to place it in the tin, contrive to hold in the same hand that you take the short end with, an ounce vial of ether, and let the ether run into the upper part of the water bath. Then hold a light for a second or two as close as possible to the long end of the syphon, and then place under it in succession three or four tumblers which have been previously warmed; allow a few seconds for the tumblers to fill, and as they are removed you may apply a light to them, when the vapour they contain will burn freely. Any vapour remaining in the tube may then be burned.

For Cholera Morbus give two teaspoonfuls of Lyman's Pain Reliever, with one or two tablespoonfuls of good brandy every half hour until relief is obtained. Friction should be applied vigorously to the extremities; thick flannel is the best thing to rub with.

No. 23.

THE NINE DIGITS.

Place the nine digits (that is, the figures or numbers under ten) in three rows, in such a way that, adding them together either up or down, across, or from corner to corner, the totals shall always be fifteen.

(Answer to No 23 on page 20.)

No. 24.

SYMPATHETIC INKS.

Under the name of sympathetic inks are designated certain liquids which, being used for writing, leave no visible traces on the paper, but

which through the agency of heat or by the action of chemicals, are made to appear in various colours. The use of such means for secret correspondence is very ancient. Ovid, Pliny, and other Roman writers speak of an ink of this kind, which, however, was nothing more than fresh milk. It sufficed to dust powdered charcoal over the surface of the paper upon which the characters had been traced, when the black powder adhered only to those places where the milk in drying left fatty matter on the surface.

A great number of sympathetic inks may be obtained by means of reactions known to chemistry. For instance, write on paper with a colourless solution of sugar of lead, if the water that is used for the solution be pure, no trace of the writing will remain when it becomes dry. Now hold the paper over a jet of sulphuretted hydrogen, and the characters will immediately appear on the paper, of an intense black colour.

The following recipes for inks of this kind are more simple :—

If writing be executed with a dilute solution sulphate of iron, the invisible characters will appear of a beautiful blue, if the dry paper be brushed over with a small quantity of the solution of the yellow prussiate of potash, or they will be black if a solution of tannin be substituted for the prussiate. If the characters be made with a solution of sulphate of copper, they will at once turn blue on exposure to the vapours of ammonia. To obtain red write with a very dilute solution of perchloride of iron. By holding the paper in the vapour arising from a

LYMAN'S
CONCENTRATED
EXTRACT OF SARSAPARILLA,

Highly approved and recommended by the Medical Profession for the cure of **Scrofula, Eruptive Skin Diseases, Liver Complaint, Impurities of the Blood, Syphilis, &c., &c.**

Strengthens the System, Improves the Complexion, Purifies the Blood, and Combats the Evil Effects of mercurial treatment of Venereal Diseases.

On account of it's Highly Concentrated form this Extract is More Effective in small doses than the large doses of most such preparations.

FIFTY (50) CENTS A BOTTLE.

WHOLESALE BY

LYMAN BROS. & CO., Toronto, and by
LYMAN SONS & CO., Montreal.

LYMAN'S
WORM LOZENGES

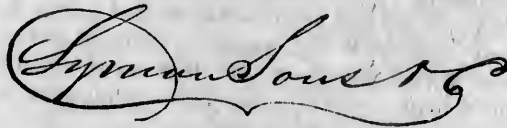
Agreeable to the Taste, Decided in Effect,
 Guaranteed to be Entirely Vegetable, Contain
 no Mineral Medicines, Can be used with
 Perfect Safety.

—:O:—

FOR FULL DIRECTIONS SEE THE CIRCULAR.

—:O:—

SEE THAT THE SIGNATURE OF THE FIRM



IS AROUND EACH BOX.

NO OTHER GENUINE.

long necked glass flask, containing sulphuric acid and a few drops of a solution of sulphocyanide of potassium, the characters will appear of a blood red colour, which will again disappear on submitting them to the vapours of caustic ammonia. This experiment can be repeated over and over again.

During the Indian Mutiny important correspondence was carried on by the English by means of the use of rice water. On the application of iodine the despatches immediately appeared in blue characters.

Sympathetic inks, which are developed under the influence of heat only, are much easier to use than the foregoing. Characters traced on paper with a clean quill pen, dipped in onion or turnip juice, become absolutely invisible when dry; when the paper is heated, the writing appears of a brown colour. The juices of lemons, oranges, apples, and pears are also good for this purpose. A dilute solution of chloride of copper used for writing, is invisible until the paper is heated, when the letters become a beautiful yellow, disappearing again when the paper becomes cold. The acetate, nitrate, sulphate, and chloride of cobalt, possess a like property. When a dilute solution of these salts is used as an ink, the writing, although invisible when dry, becomes blue when exposed to heat. The addition of chloride of iron renders them green, and this opens the way for a very pretty experiment. If a winter landscape be drawn in Indian ink, and the sky be painted with a wash of cobalt alone, and the branches of the trees be clothed with leaves executed with a mixture of cobalt and iron, and the snow-clad earth be washed over with the same mixture, a magic transformation at once takes place on the application of heat, the winter landscape changing to a summer scene.

...ning sulphuric
 ...tion of sulpho-
 ...ters will appear
 ...will again dis-
 ...the vapours of
 ...ent can be re-

...portant corres-
 ...ne English by
 ...On the applica-
 ...immediately

...veloped under
 ...uch easier to
 ...ers traced on
 ...ed in onion or
 ...invisible when
 ...the writing
 ...ces of lemons,
 ...good for this
 ...ride of copper
 ...the paper is
 ...a beautiful
 ...he paper be-
 ...ulphate, and
 ...ke property.
 ...ts is used as
 ...isible when
 ...heat. The
 ...them green,
 ...retty experi-
 ...yn in Indian
 ...a wash of
 ...he trees be-
 ...a mixture of
 ...ad earth be-
 ...re, a magic
 ...n the appli-
 ...hanging to

ELLIOT'S DENTIFRICE

THE OLD



RELIABLE

(TRADE MARK SECURED.)

Proved by the test of constant use by the public for 40 years to be

**The Best for Preserving, Beautifying and Cleansing
 THE TEETH AND GUMS.**

Put up in beautiful sprinkler stoppered bottles, in neat wooden boxes, and 5 cents sample packages.

CAUTION.—Beware of spurious imitations. Any one selling any Powder under the name of Elliot's Dentifrice, either by the box, bottle or by weight, will be prosecuted for infringement of trade rights.

FOR SALE RETAIL EVERYWHERE.

Wholesale by LYMAN SONS & CO., Montreal, P. Q.

SIMON'S RAT AND VERMIN KILLER.

The Great Phosphorous
 Rat Poison.



Sudden Death to all
 Household Pests.

Wholesale by LYMAN SONS & CO., Montreal, P. Q.

JACOB'S RHEUMATIC LIQUID,

FOR THE IMMEDIATE RELIEF AND
PERMANENT CURE OF

Rheumatism, Sprains, Bruises, Burns, Frost-Bites,

LAME BACK, SIDE, LIMBS OR STOMACH.

**Numbrness of Limbs, Swelling of Joints, Sudden
Colds, Diphtheria, Sore Throat, &c.**

Jacob's Rheumatic Liquid has been before the public for upwards of twenty years, and such are its merits that it is now justly considered as an indispensable article in every family where it is known.

Having a wonderful effect, when taken internally, in quickening the circulation of the blood, it is invaluable to persons predisposed to Paralysis, or subject to attacks of Heart Disease. In cases of Dyspepsia, where food distresses, it affords prompt relief, and continued for a short time sets everything right.

Into whatever family, or community, or locality this medicine has been introduced, it has invariably gained the same reputation; and this reputation is indicated by the following very brief extracts from letters that are full and explicit:—

From Jeffrey Hale, Esq., Quebec, dated November, 1861,

"Your Liquid I have found to be more pungent and efficacious than any other Liniment known."

"We find Jacob's Rheumatic Liquid to give better satisfaction to our customers than any other Liniment."

W. R. Doak, Trader, Brockville; A. W. Hutchins, Frost Village;
C. S. Clark, St. Francis Mills, Brompton; William Sawyers,
P. M., Sawyerville; T. Hitchcock, Hatley; J. P. Spockwe,
Danville; Foster & McLeay, Richmond.

From Rev. T. W. Constable, Clarenceville, dated Sep. 19, 1861

"I have found your Liquid to be one of the best medicines in use for Lu-
bago and kindred Rheumatic Affections; also for all Diseases of the Throat

For further Testimonials see Circulars, and ask any person who has used
"Jacob's Liquid."

TO BE HAD OF ALL DEALERS IN MEDICINE.

WHOLESALE AGENTS FOR THE DOMINION:

LYMAN SONS & CO., - - - MONTREAL

