

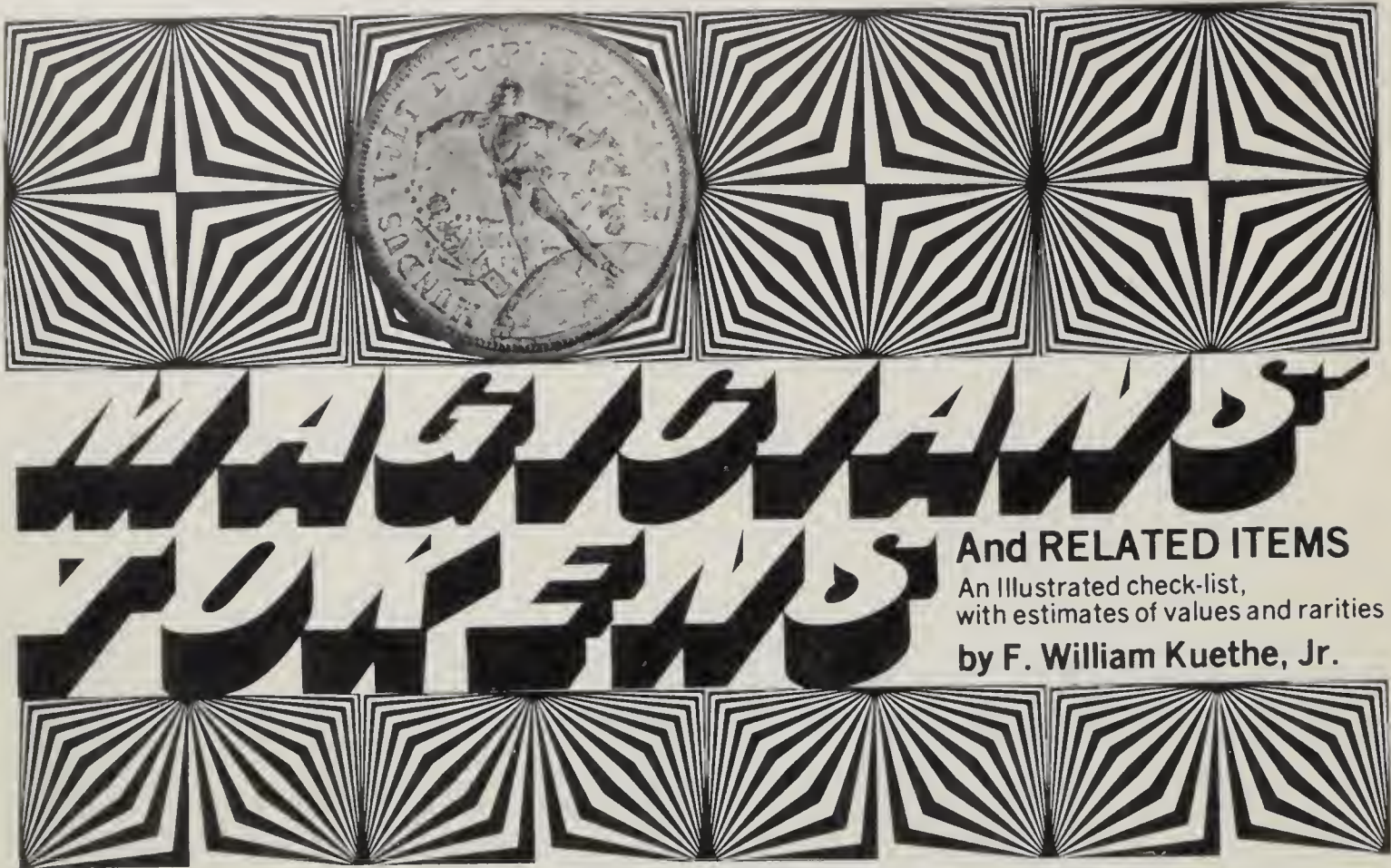


WAGGAMANS WAGGAMANS

And RELATED ITEMS
An Illustrated check-list,
with estimates of values and rarities
by F. William Kuethe, Jr.



Dedicated to the memory
of two friends
who were pioneer collectors
of magic coins
JAMES B. FINDLAY
of England
and
JOHN MULHOLLAND
of the United States



MAGICIANS' TRICKS

And RELATED ITEMS

An Illustrated check-list,
with estimates of values and rarities
by F. William Kuethe, Jr.

From time immemorial, the conjuror has performed his mysteries using — among other things — money. The reasons for this are fairly obvious. Coins are clearly recognizable, universally available, and possess the size and shape easily adaptable to the magician's digital dexterity that inspired the word "legerdemain". But probably most important is the fact that a magician is expected to use money in his conjurings and, above all, produce it. As Christopher Marlowe wrote in "Doctor Faustus" (probably as early as 1588): "Hold, take this book, peruse it thoroughly; The iterating of these lines brings gold . . ."

Three and a half centuries later, Stanley Collins, well known English conjuror and collector of things magical (including magic tokens), wrote on the theory of magic:

" . . . Surely if a person be a magician, one who can violate any or all of natural laws at his will, he would have no need to impose his own conditions before his wonderful power can be brought into play. His plots are ready to hand: The satisfaction of his desires by his magical art. He wants money — he reaches for it in the air . . ." (1)

Thus the almost universal craving for money, not unique to magicians, formed the basis for the famous tricks, "The Miser's Dream" and the "Shower of Gold," both of which had the essential element of plucking money from the thin air. Herrmann the great used real \$20 gold pieces in his act, but these props were beyond the resources of most magicians, so they had to devise substitutes. With an eye toward both visibility and ease of handling, as well as — in many cases — personal advertisement, the concept of "magic tokens" was developed.

Much has been written of this fascinating subject, and it is not the purpose of this paper to repeat that data. Rather, I hope here to give as complete a listing as possible of what magic tokens exist, briefly describe them,

and provide an indication of their comparative rarity and value. For ease of classification, they have been divided into six categories, each of which will be described separately.

RARITY AND VALUE TABLES

There are any number of intangibles involved in setting up tables of rarity and value. It is safe to say that these values are relative, approximate and, in my opinion, fairly close to the current market. Obviously, some will be too high, others too low, but as a general guide I do not feel they distort the market as it exists now. Equally obvious, I hope, is the fact that where I give a rarity rating of R-1, meaning "very common, over 1,000 known," I do not personally know of the current location of 1,000 pieces of that particular token. However, when the distributor tells me that 2,500 pieces were recently struck, I have no hesitation in calling that piece common, but common in relation to other magic tokens, not in relation to other tokens that may have mintings in the hundreds of thousands.

Rarity Table		Value Table			
# of examples known			G-VG	F-VF	Unc.
R-1	over - 1,000	V-1	.50	.75	1.00
R-2	501 - 1,000	V-2	1.00	1.50	2.00
R-3	301 - 500	V-3	1.50	2.25	3.00
R-4	101 - 300	V-4	2.50	4.00	6.00
R-5	51 - 100	V-5	4.00	6.00	8.00
R-6	26 - 50	V-6	6.00	8.00	10.00
R-7	11 - 25	V-7	8.00	11.00	15.00
R-8	5 - 10	V-8	10.00	13.00	20.00
R-9	2 - 4	V-9	12.50	17.50	25.00
R-10	Unique	V-10	Specific valuation given		

DATE AND PLACE OF ISSUE

In most cases, the dates are approximations, in the hope of giving relative age. In a number of the more recent pieces, the date can be fixed with some accuracy, but many of the earlier pieces are dated based on when that performer or magic dealer was active. Also, even though a piece may be dated — such as the Downs' "1904" — it is obvious that the dies were re-used and tokens bearing that date were issued for decades after 1904.

COMPOSITION

A notation has been made with each piece as to what metal it is struck in; where struck in two or more metals, a different sub-class is given. For the purposes of this paper, I have used the following definitions:

Copper (C) — A red-colored element which oxidizes into a rich chocolate brown color:

Brass (BR) — An alloy of copper and zinc, of a yellow color, sometimes almost greenish-yellow in tint;

Bronze (BZ) — An alloy of copper and tin, often "golden" in color.

(With those definitions, I feel I must quote no less an expert than Walter Breen, who has written: "I cannot distinguish bronze from copper by ordinary examination, nor can anyone else; the difference is in alloy elements, particularly tin and/or zinc, but various types of bronzes — there are many — have similar color both when new and bright and when toned by exposure to atmospheric contaminants.") (2)

Nickel-Silver (NS) — A white alloy of nickel, copper and zinc, sometimes called German silver;

White Metal (WM) — In the course of writing one of his articles about magic tokens, Ed. Heyl gave this definition (and I use it as a guide): "This is a cheap alloy largely based on zinc, gray in color, but usually with a plated surface, nickel plated in all probability. To determine whether or not a token is made of white metal, balance it on the tip of a finger and tap its edge lightly with a coin such as a half dollar. If it emits a ring, it is not white metal. If it emits a dull thud, it is." (3)

COMPOSITION CODES

There are a variety of materials noted in this listing, and the following list will cover the abbreviations used:

ABZ — Antiqued Bronze

AS — Antiqued Silver

BLP — Blue Plastic

BP — Brass Plated

BR — Brass

BRP — Brown Plastic

BZ — Bronze

C — Copper

CH — Chrome

CN — Copper-Nickel

CP — Clear Plastic

CPl — Copper Plated

GD — Gold

GDPIC — Gold Plated Copper

GP — Green Plastic

GS — German Silver

GS/GPl — German Silver, Gold-Plated

GT — Gilt

GT/C — Gilt on Copper

LD — Lead

LD/GT — Lead, Gilt

LD/Npl — Lead, Nickel-Plated

LDplGD — Lead, Gold-Plated

LDplS — Lead, Silver-Plated

N — Nickel

NPl — Nickel-Plated

NplBr — Nickel-Plated Brass

NPlBz — Nickel-Plated Bronze

NP1C — Nickel-Plated Copper

NS — Nickel-Silver

OP — Orange Plastic

RP — Red Plastic

PP — Pink Plastic

S — Silver

SH — Shell token (hollowed out)

SS — Stainless Steel

ST — Steel (magnetic)

WM — White Metal

WP — White Plastic

YP — Yellow Plastic

ZN — Zinc

In the lower right corner of the description are given the size and edge codes. The size is measured in mm. The following edge codes are used:

R — Reeded edge

S — Smooth edge

U — Unknown

V — Various (see text for description)

PHOTOGRAPHS

Illustrations of medals appearing in the listings are not actual size.

SCOPE

For the purpose of keeping this as simple as possible, I have given all pieces that were struck with the same die — or with dies that were essentially the same — one listing number. No mention is made of thick or thin varieties, nor of die rotations, since that is the domain of the specialist, and those factors as well as minor die differences should not affect either the rarity or value rating. Furthermore, I have omitted all wooden nickels, since I feel that they should be treated separately and check lists of them are already in existence. I also have omitted awards and medals, on the grounds that they are often unique and difficult — if not impossible — to authenticate.

TOKENS AND MEDALS

In this category are to be found both the imitations of money used for conjuring purposes and the advertising tokens put out by magicians and magic dealers. In many cases, one token served both purposes. Where explanatory material is deemed necessary or interesting, that data has been entered immediately following the particular listing.

MIRROR CARDS

This subject has been treated in detail in these pages earlier, so for illustration and explanatory material, we will refer you to that very fine article. (4) We have used the numbers in that article and added to them new pieces — with pictures — that have been discovered since that article was written.

GENERAL INFORMATION

The following remarks apply to all four of the remaining classifications:

The true value to a collector of items of these types is in the attribution to a well-known performer or dealer, and since they inherently lack identification as such, the precept of "Caveat Emptor" would certainly apply. For this reason, although the coins and/or tokens are listed for the record, no estimate of rarity or value is given.

PLATED COINS

These are coins that have been plated by magicians for their use, usually for stage work, in order to improve visibility, or to make the coin appear to be one of a higher value (silver instead of copper, gold instead of nickel-silver).

MACHINE STAMPED TOKENS

A number of magicians have "struck" their own tokens by using the familiar token punching machine found in many airports and bus stations.

Although of interest to the collector, the fact that the token is either unique or made in very limited quantities — plus the possibility that anyone could, at any time, strike a similar piece using anyone's name — makes this, in my opinion, collectible only as a personalized novelty.

PLAIN DISCS

These are plain discs that are used as imitation coins by stage performers. At a distance, they appear to be coins, since any details on a coin would not be recognizable from a stage, and the smooth surface of the disc would tend to reflect the spotlight better, giving better visibility.

ASSOCIATION PIECES

Many magic dealers have sold — and magicians have used — tokens that were struck for merchants' advertisements or other non-magical purposes. These association pieces, or "used by's", came to be generally attributed to one performer from repetition of use, and on occasion, the company supplied the performer with the coins for their own advertising purposes. One notable example of this is when the well-known magician, Werner Dornfield ("Dorny"), was hired by Swift & Co. for public relations work and supplied with a quantity of "Swift Dollars". Obviously, not all examples of a particular token listed here were used by the magician to which it is attributed, so not every token listed here is, per se, a magician's token, but it is interesting to note the wide variety of types of tokens that the various magicians used in their acts.

FOOTNOTES:

1. Stanley Collins — Private correspondence to Mr. Hugall Benedict, England, 8 May, 1931.
2. Walter Breen — Correspondence to Prof. William C. Anderson, Selden, N.Y. March 30, 1975.
3. Edgar Heyl — The Journal of Necromantic Numismatics — Vol. 4 #4, October, 1969.
4. Edgar Heyl — Magician's Mirror Cards — TAMS Journal Vol. 7 #3, June-July, 1967.

REFERENCES

- Mulholland, John — The Numismatics of the Necromancers — THE SPHINX, Vol. 35 #7, New York, 1936.
- Findlay, James B. — Conjurers Coins Medals — Shanklin, I.W., England, 1964.
- Findlay, James B. — The Magic Circular, various articles from Feb., 1960 thru Sept., 1962.
- Heyl, Edgar — Cues For Collectors — Chicago, 1964.
- Kuethe, F. Wm. Jr. (ed) — The Journal of Necromantic Numismatics — 25 issues published between Jan., 1966 and Oct., 1976.

A number of articles dealing with magicians' tokens have appeared in the Journal of the Token and Medal Society. Interested readers are referred to the following issues:

Issue #	Author	Subject
Vol. 4 2	Culver, Virginia	Various
9 3	Fuld, Melvin	Green River tokens
9 5	Heyl, Edgar & Kuethe, Wm. Martinka	tokens
10 2	Heyl, Edgar	Hieronimus Scotus medal
11 5	Heyl, Edgar	Eugene Bulson token
11 6	Heyl, Edgar	Herr Alexander medal
12 1	Heyl, Edgar	Thayer token
12 3	Heyl, Edgar	Herrmann Encased Penny
7 3	Heyl, Edgar	Mirror Cards

ACKNOWLEDGEMENTS:

I must express my gratitude to the following persons for their cooperation in adding items to this check-list:

Mr. Louis Rachow, Curator and Librarian at the Walter Hampden Library of the Players Club, for allowing access to, and photographing of, the John Mulholland collection, now a part of the Players Club Library.

Mrs. James B. Findlay, who has been helpful in many ways, but specifically for loaning me a copy of the manuscript for the unpublished sequel to her late husband's book.

The following contributor/subscribers of the Journal of Necromantic Numismatics, all of whom were responsible for some information that was used in the check-list:

Milbourne Christopher	Topper Martyn
Dr. Edwin A. Dawes	Orbra Mathews
James B. Findlay	John Mulholland
Melvin Fuld	Klaus Muller
George Daily	David Price
Max K. Goodall, II	Arthur Settington
Dr. John Henry Grossman	Charles Spicer
Edgar G. Heyl	Archie Slabaugh
Ingmar Isaksson	Norman Todd
Fred. Kolb	Byron Walker
Milton Kort	Dr. S. Brent Morris
Robert Lund	Larry Weeks
Jay Marshall	James Wobensmith
	C.B. Yohe

APPENDIX FOR THE RECORD

(1) At this time I think it appropriate to correct a couple of misconceptions that have existed for some time regarding magic tokens. The first is the erroneous attribution to Ted Annemann, editor of "The Jinx", of the Green River token. Several years before Annemann wrote about them in the Jinx, the Green River company placed an ad in The Linking Ring, offering free examples of their token to any magician who wrote in for them. Although the ad did not state the quantity to be given, they gave 50 examples of their token at a time. Perhaps this large quantity being given out caused numerous reorders, but in any case, the Green River token is noted for having a large number of die varieties. The magazine ad is reproduced as an example of how a company encouraged magicians to use its token in their tricks, thus gaining publicity for the company at a very low cost.

(2) Robert Sherman of Bridgeport, Conn., issued several magic tokens, but surely the most unusual was his Sholem Good Luck coin locket, listed here as MT-298. The advertisement for it is almost as unusual as the token itself, so it is reproduced here for the sake of completeness.

(3) There have been a number of misconceptions regarding the medal put out by "The Sphinx" magazine. The medal was sculpted by Mark Federson, cast in silver, and awarded to contributors of tricks to "The Sphinx". The medal of "The Sphinx" is illustrated. The token that is often confused with "The Sphinx" medal is the end of a watch fob. It is a Sphinx medal, but *not* "The Sphinx" medal.

It is believed that this watch fob came out in the 1920s, when the opening of King Tut's tomb caused a great deal of interest in Egyptology.

MAGICIAN TOKENS (MT)



ABBOTT'S MAGIC CO. — MT001

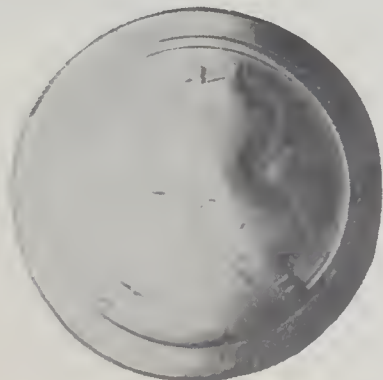
LOCATION: Colon, Michigan. DATE: 1938 to date.
 OBV: Monogram, "ABBOTTS" above, three stars left and right, "MAGIC" below.
 REV: Same
 COMPOSITION: GS, R1, V1; WM, R5, V3; BZ, R1, V1; NpIBZ, R1, V1. 31-R

ABBOTT'S MAGIC CO. — MT002

LOCATION: Colon, Michigan. DATE: 1946.
 OBV: Tambourine ring with wand and handkerchiefs, in center, field plain.
 REV: Same.
 COMPOSITION: GS, R9, V7. 39-S

ADAMS, GRAHAM — MT003

LOCATION: England. DATE: 1935.
 OBV: Plain, stamped GRAHAM/ADAMS.
 REV: Same.
 COMPOSITION: NS, thick-stamped both sides, R4, V5, thin-stamped one side R4, V5. 32.5-R



ADAMS, GRAHAM — MT004

LOCATION: England. DATE: 1945.
 OBV: Plain, stamped "GRAHAM ADAMS".
 REV: Silhouettes of two crowned figures.
 COMPOSITION: NS, R6, V7. 38.5-R



ADAMS MAGIC CO. — MT005

LOCATION: Asbury Park, New Jersey. DATE: 1950 to date.
 OBV: Mephistopholean figure, "ADAMS" below.
 REV: Same.
 COMPOSITION: WM, raised lettering, R5, V3; GT/C, raised lettering, R5, V3; WM, incused lettering, R1, V2; GT/C, incused lettering, R1, V2. 33.5-S



AGOSTA-MEYNIER — MT006

LOCATION: France. DATE: 1910.
OBV: "PHYSIQUE AMUSANTE", wreath, inside is "AGOSTA-MEYNIER/ PARIS".
REV: Woman facing left, "REPUBLIQUE FRANCAISE".
COMPOSITION: AL, R8, V8. 36.5-S



ALEXANDER, HERR (Alexander Heimberger) — MT007

LOCATION: Germany. DATE: 1847.
OBV: Bust right of bearded man, around is "HERR ALEXANDER".
REV: "PRESENTED/ TO/ HERR ALEXANDER/ AS A TESTIMONY/ OF ESTEEM FROM/ HIS FRIENDS/ IN/ NEW YORK/ 1847".
COMPOSITION: GD, R10, V200; GDpIC, R7, V9; C, R7, V9. 29-S



KEN ALLEN PRODUCTS — MT008

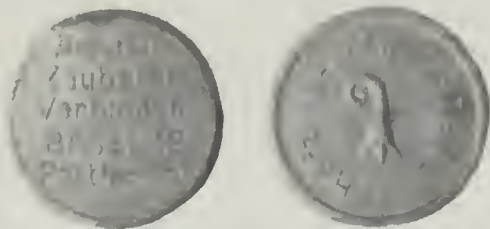
LOCATION: New Jersey. DATE: 1962.
OBV: 2 Chinese symbols, "K" left, inverted "A" right, square hole in center.
REV: Same.
COMPOSITION: C, 30mm, R3, V2; GS, 30mm, R3, V2; C, 37.5mm, R4, V3. S

ALLTRIX — MT009

LOCATION: Germany. DATE: 1948.
OBV: Pentacle in center, around is "ALLTRIX GLUCKSMUNZE".
REV: Mephistopholes figure.
COMPOSITION: AL, R7, V7. 33.5-S

ALLYNE — MT010

LOCATION: U.S.A. DATE: 1870.
OBV: Shell-Liberty head left, "1868".
REV: Insert - green cardboard disc, "ALLYNE THE WIZARD IS COMING".
COMPOSITION: BR, R10, V100. 39-S



AMATEUR ZAUBERER — MT011

LOCATION: Switzerland. DATE: Unknown.
OBV: "AMATEUR/ ZAUBERER/ VERBINDUNG/ BASEL 18/ POSTFACH 161".
REV: "HOFZINSER - ZWEIG - BASEL" around figure.
COMPOSITION: AL, R8, V7. 29-S



ANDERSON, JOHN HENRY — MT012

LOCATION: Scotland. DATE: 1849.
OBV: Bust left, "PROFESSOR/ ANDERSON" around is "GREAT WIZARD OF THE NORTH"/ "COMMANDED TO PERFORM BEFORE HER MAJESTY QUEEN VICTORIA/ AT BALMORAL CASTLE AUGUST 24, 1849".
REV: Portrait medal of Her Majesty, Queen Victoria.
COMPOSITION: Pewter, R9, V125; GT, R9, V125. 51-S

ANDERSON, JOHN HENRY — MT013

LOCATION: Scotland. DATE: 1849..
OBV: Bust right, "PROFESSOR/ ANDERSON", same lettering around rim as 1012.
REV: Same as 1012.
COMPOSITION: Pewter, R9, V125. 51-S

ANDERSON, JOHN HENRY — MT014

LOCATION: Scotland. DATE: 1849.
OBV: Same as 1013.
REV: Same as obv. of 1012.
COMPOSITION: Pewter, R9, V150. 51-S



ANDREWS, MAX — MT015

LOCATION: England. DATE: 1948.
OBV: Bat with "VAMPIRE" in center, around is "MAX ANDREWS/ MAGIC COIN".
REV: Plain.
COMPOSITION: AL, R7, V6. 31.5-S

ANTON, ALBERT — MT016

LOCATION: Czechoslovakia. DATE: Unknown.
OBV: Pentacle with "A.T.S.", around is "ALBERT ANTON/ ZAUBERAPPARATE/ TEPLITZ-SCHONAU".
REV: Mephistopholes figure.
COMPOSITION: WM, reeded edge, R6, V6; WM, smooth edge, R6, V6. 34-V

ARGENTINE SOCIETY OF MAGICIANS — MT017

LOCATION: Buenos Aires, Argentina. DATE: 1950.
OBV: Unknown.
REV: Unknown.
COMPOSITION: BZ, R8, V7. U-U





ASKINS, JOSEPH — MT018

LOCATION: England. DATE: 1796.
OBV: Figure of man with cane, top hat and wooden leg, around "MR. JOSEPH ASKINS".
REV: "THE/CELIBRATED/VENTRILOQUIST/1796".
COMPOSITION: C, R8, V40; Rev: Monogram in wreath, R8, V40; Rev: Anchor in wreath, R8, V40. 29-R

ASTLEY, PHILLIP — MT019

LOCATION: London, England. DATE: 1795.
OBV: Mercury on horseback, below "LYCERIM STRAND/ LONDON" around is "THE FIRST EQUESTRIAN PERFORMANCE IN EUROPE".
REV: Man standing on head on sword point below "EVERY EVENING" around is "SINGING DANCING TUMBLING SLACK WIRE ETC."
COMPOSITION: C, R5, V6. 29-V

Although there is nothing on this token to identify Phillip Astley as the issuer, it is known that Astley occupied the Lyceum while his amphitheatre was being rebuilt after a fire in 1794. Astley was the author of "Astley's System of Equestrian Education" (Lambeth, 1801) as well as "Natural Magic: or, Physical Amusements Revealed," (London, 1785), a conjuring book greatly sought after by collectors.



ASTLEY, PHILIP — MT020

LOCATION: England. DATE: ca.1816
OBV: Around is "THEATRE ROYAL/ WESTMINSTER", inside is "ASTLEY'S", hole.
REV: Blank.
COMPOSITION: Unknown, R7, V7. U-U

A.W.S. (Associated Wizards of the South) — MT021

LOCATION: England. DATE: 1960.
OBV: "JUBILEE/ A.W.S./ 1960".
REV: Blank.
COMPOSITION: NS, R7, V5. 38-R



BALDWIN, SAMRI S. — MT022

LOCATION: U.S.A. DATE: 1905.
OBV: Seated figure of turbanned man, right arm on table, skull on table.
REV: "GOOD/ LUCK" around wreath, dragon inside.
COMPOSITION: C, R8, V7. 30-S



BAMBERG MAGIC & NOVELTY CO. — MT023

LOCATION: New York, New York. DATE: 1908.
OBV: Devil's head, around "MUNDUS VULT DECIPI : DECIPIATUR".
REV: BAMBERG MAGIC & NOVELTY COMPANY NEW-YORK LARGEST/ DEALERS/ IN/ THE WORLD/ AGENCY FOR/ CARL WILLMANN/ HAMBURG/ GER.
COMPOSITION: GS, R7, V7; Npl, R8, V7. 31-R

BARTL, JANOS — MT024

LOCATION: Hamburg, Germany. DATE: Unknown.
OBV: Devil waving wand over flower pot, coins dropping from other hand.
REV: Same.
COMPOSITION: AL, R1, V1; WM, R1, V1; ST, R1, V1; NS, R1, V1; NSG, R-1, V1; CP, R2, V2; LD, R2, V2; SH, R1, V1.
NOTE: Many of these coins have the name "Balmberger" in very small letters under the flower pot. (Often visible but undecipherable.) AL, 30.25mm, R6, V3. 34-S



BARTL — MT025

LOCATION: Germany. DATE: Unknown.
OBV: Devil waving wand over flower pot, coins dropping from other hand.
REV: Star with "NB" in center, "BOSCO" in 5 points, above is "MAGIC/ COINS".
COMPOSITION: AL, R1, V1; WM, R1, V1; AL, 33mm die variety, R1, V1; WM, "Made in Germany" below star, R1, V1; Die variety (Fat devil) reeded edge, R-3, V-2. 34-S



BARTL — MT026

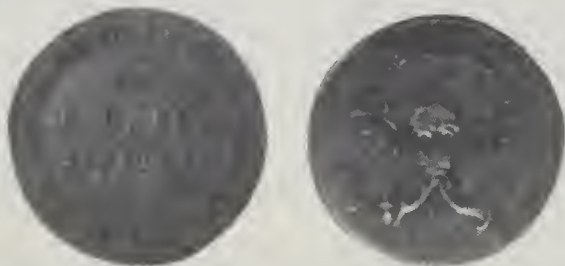
LOCATION: Germany. DATE: Unknown.
OBV: Devil waving wand over flower pot, coins dropping from other hand.
REV: Same, but incused.
COMPOSITION: NS, 33.5mm, R1, V1; 39.5mm, R7, V5. S

BARTL — MT027

LOCATION: Germany. DATE: Unknown.
OBV: Devil waving wand over flower pot, coins dropping from other hand.
REV: Blank.
COMPOSITION: WM, R3, V2. 34-S

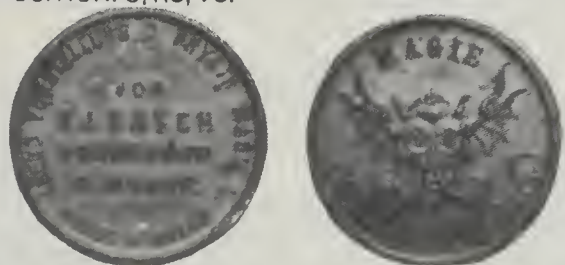
BARTL TYPE — MT028

LOCATION: Japan. DATE: Unknown.
OBV: Devil waving wand over flowers, coins dropping from other hand, at right "MADE IN/ JAPAN".
REV: Same. Two shells fastened together.
COMPOSITION: ST, R1, V2. 34-S



BASCH, E — MT029

LOCATION: Germany. DATE: ca.1870.
OBV: "VON/ E. BASCH/ PHYSIKER" around is "JEDEN ABEND VORSTELLUNG D. PHYSIK MAGIE U. OPTIK".
REV: Devil's head with wings and trumpets "MAGIE/ DENKT ANL BASCH".
COMPOSITION: C, R8, V8. 21.5-S



BASCH, F.J. — MT030

LOCATION: Germany. DATE: 1870.
OBV: "VON/ F.J. BASCH/ PROFESSOR/ D. MAGIE" around is "JEDEN ABEND VORSTELLUNG D. PHYSIK MAGIE U. OPTIK".
REV: Devil's head with wings and trumpets, "MAGIE/ DENKT ANL BASCH".
COMPOSITION: C, R7, V7; BR, R7, V7. 21.5-S

BEAL, E. — MT031

LOCATION: England. DATE: 1961.
OBV: (Issued in connection with the A.W.S.
REV: Jubilee — See MT021
COMPOSITION: Unknown, R8, V4. U-U



BELLINI, ERNESTO — MT032

LOCATION: Italy. DATE: Unknown.
OBV: Bust left of man, "PHENOMENE TELEPATIQUE".
REV: "SOUVENIR/ ERNESTO BELLINI"/ blank space all within large wreath.
COMPOSITION: AL, R6, V6. 39.5-S



BLACKSTONE, HARRY — MT033

LOCATION: U.S.A. DATE: 1943.
OBV: Bust right of Blackstone, around: "BLACKSTONE'S JUNIOR MAGICIANS".
REV: Blank. 6mm hole in center.
COMPOSITION: AL, R7, V5; ST, R7, V5. 35-S



BLACKSTONE, HARRY — MT034

LOCATION: U.S.A. DATE: 1975.
OBV: "HARRY/ BLACKSTONE/ (bust portrait left of Blackstone/ 1885-1965/ TMC-3".
REV: Elongated coin.
COMPOSITION: U.S. coins: 1¢ - 1965, R4, V1; 10¢ - 1965, R7, V3; 25¢ - 1965, R9, V5; 1¢ - undated, R3, V1.



BLAND, J. — MT035

LOCATION: London, England. DATE: Unknown.
OBV: Devil's head, around "MAGICAL REPOSITORY".
REV: "J. BLAND'S/ ENTERTAINMENTS/ FOR/ EVENING PARTIES/ 478 NEW OXFORD ST./ LONDON".
COMPOSITION: BZ, R6, V6; GT, R7, V7. 22-S

BLIND, ADOLPHE — MT036

LOCATION: Geneva, Switzerland. DATE: 1927.
OBV: "SOUVENIR DE MAGICUS", below is hand engraved name of recipient.
REV: Unknown.
COMPOSITION: Oxidized, R8, V75. U-S



BONTJES, J. GARY — MT037

LOCATION: Morton, Illinois. DATE: 1969.
OBV: J. GARY/ BONTJES/ MAGICIAN.
REV: MORTON, ILL./ 265-6910. Holed for key chain.
COMPOSITION: RP poker chips, R2, V2.

39 4-S



BOSCO — MT042

LOCATION: Unknown. DATE: Unknown.
OBV: Bust left of man, "1793/ 1863/ BOSCO".
REV: Building, "DRESDEN", the four playing card suits.
COMPOSITION: NS, R6, V7.

34.5-S

BOSCO — MT043

LOCATION: Unknown. DATE: Unknown.
OBV: Bust right of Kaiser Wilhelm II, "WILHELM II DEUTSCHER KAISER KONIG VON PREUSSEN".
REV: Two headed eagle crest, around is "ZAUBERAPPARATE MANUFACTUR BOSCO/ DRESDEN".
COMPOSITION: Unknown, R7, V7.

U-U



BOROSE, HANS — MT038

LOCATION: Austria. DATE: Unknown.
OBV: Bust right, "HANS BOROSE".
REV: "ICH BRINGE DIR GLUCK", wand with 4 ace cards on top.
COMPOSITION: AL, R6, V4.

36-S

BOROSE, HANS — MT039

LOCATION: Unknown. DATE: Unknown.
OBV: Bust right, "HANS BOROSE".
REV: "ICH BRINGE DIR GLUCK/ KARLSBADER/ ORPHEUM".
COMPOSITION: AL, R6, V4.

36-S



BOULTON, ALAN — MT044

LOCATION: Lake Forest, Ill. DATE: 1962.
OBV: ALAN/ THE MAGICIAN/ EVENINGS & WEEKENDS/ ALAN BOULTON/ BA 3-2801.
REV: "GOOD LUCK" on horseshoe, four-leaf clover in center, painted green.
COMPOSITION: AL, R3, V3.

35.2-S

BOULTON, ALAN — MT045

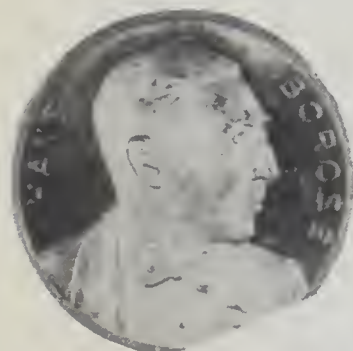
LOCATION: Lake Forest, Illinois. DATE: 1967.
OBV: ALAN/ THE MAGICIAN/ ALAN BOULTON/ LAKE FOREST/ ILLINOIS.
REV: Same as MT044.
COMPOSITION: AL, R2, V3.

35.2-S

BRETON — MT046

LOCATION: Paris, France. DATE: Unknown.
OBV: "BAROMETRE PHYSIQUE AMUSANTE", devil holding bottle with his tail, pouring wine.
REV: "BRETON 12 QUIN-CAMPAIX 38 PARIS".
COMPOSITION: Unknown, R9, V9.

U-U



BOROSE, HANS — MT040

LOCATION: Unknown. DATE: Unknown.
OBV: Bust right, "HANS BOROSE".
REV: "ICH BRINGE DIR GLUCK/ CABARET/ BENZ/ MUNCHEN".
COMPOSITION: AL, R6, V4.

36-S

BOSCO — MT041

LOCATION: U.S.A. (?). DATE: 1880.
OBV: Three magician's cones, "BOSCO PRESTIDIGITATOR".
REV: Wreath in center, "EXPERIENCES -- CALIFORNIENNES".
COMPOSITION: BR, R10, V50.

24-U



BREWE, WM. H. — MT047

LOCATION: Cincinnati, Ohio. DATE: 1976.
OBV: "SURPRISINGLY/ SUPERIOR"/ WM. H. BREWE/ MAGIC/ 1698 MONTROSE ST./ CINCINNATI, OH. 45214/ (513) 921-5800.
REV: Blank.
COMPOSITION: ST, R2, V1.

25-S

BRUSH — MT048

LOCATION: Unknown. DATE: Unknown.
OBV: BRUSH/ THE/ GREAT/ MAGICIAN incused.
REV: Same.
COMPOSITION: St, 37.8mm reeded edge, R5, V3, 36.2mm
smooth edge, R5, V3. U



BULSON, DR. EUGENE — MT049

LOCATION: U.S.A. DATE: 1950.
OBV: GENE BULSON/ 1948, three cups, three balls and wand.
REV: "G B" with coins, cards and star.
COMPOSITION: BZ, R8, V9; Rhodium plated bronze, R7, V9.
30.5-S



BURTINI (William L. Powell) — MT050

LOCATION: England. DATE: 1946.
OBV: Large "Q" surrounded by wreath.
REV: Same.
COMPOSITION: NS, R3, V3; GT, R6, V5.

31-R



BUSTELLI — MT051

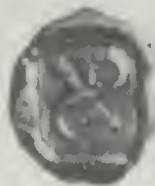
LOCATION: Italy. DATE: 1935.
OBV: ILLUSIONISTA BUSTELLI/ bust portrait/ 1935. XIII.
REV: Spider web with spider PORTE/ BONHEUR.
COMPOSITION: NS, R8, V8.

35-S

CAHELLO, A. — MT052

LOCATION: Madrid, Spain. DATE: 1920.
OBV: "A. CABELLO" in script, below is 'CINCO PESETAS'.
REV: Coat of Arms, below is "CINCO PESETAS".
COMPOSITION: NS, R8, V8.

41-R



CAGLIOSTRO, LE COMTE — MT053

LOCATION: Italy. DATE: 1780.
OBV: Seal — see photo.
REV: Unknown.
COMPOSITION: Unknown, R9, V9.

U-U



CAROLY — MT054

LOCATION: Paris, France. DATE: Unknown.
OBV: Obverse of French 5 Fr. piece (imitation).
REV: "CAROLY/ PARIS" in oval on smoothed-off rev. of French
5 Fr. piece (imitation).
COMPOSITION: AL, R8, V8.

37-S

CARTER — MT055

LOCATION: U.S.A. DATE: 1920.
OBV: "CARTER", rays above & below.
REV: "PEOPLES THEATER/ 10/ CENTS".
COMPOSITION: AL, octagonal, R10, V50.

25.4-S



CASA MAGICA MILANO (O. Scolari, Prop.) — MT056

LOCATION: Milan, Italy. DATE: 1930.
OBV: Winged figure with flowers & coins falling from hands,
around is "CASA MAGICA MILANO".
REV: Large double star, around is "MUNDUS • VULT • DE-
CIPI • DECIPIATUR •".
COMPOSITION: NS, R8, V8.

36-R

CHANG (Whittington Wickes) — MT057

LOCATION: England. DATE: Unknown.
OBV: "WITH THE/ COMPLIMENTS OF/ 'CHANG'".
REV: Plain.
COMPOSITION: Pink paper, holed at top, R4, V2.

38.5-S



CHANG (Whittington Wickes) — MT058

LOCATION: England. DATE: Unknown.
OBV: "WITH THE/ COMPLIMENTS OF/ 'CHANG'/ 'THE
CHINESE/ FANTASY'".
REV: "FROM/ NOW ON YOUR/ 'STAR OF DESTINY'/ WILL
SHINE/ BRIGHTER".
COMPOSITION: Paper disc holed at top, white, R3, V2, blue,
R3, V2; green, R3, V2, yellow, R3, V2.

38.5-S



CHANIN, JACK — MT059

LOCATION: Philadelphia, Pennsylvania. DATE: 1955.
OBV: "CHANIN" with star above & below.
REV: ROUND/ OUT YOUR/ ENTERTAINMENT/ NOVELTY -
M.C./ — Magic — / Phil. Pa. / Ki 5-5452.
COMPOSITION: Green cardboard, R1, V1. 45.75-S

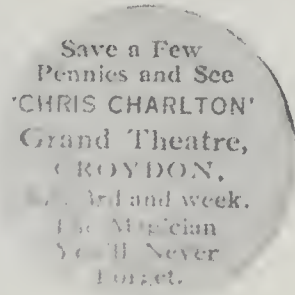
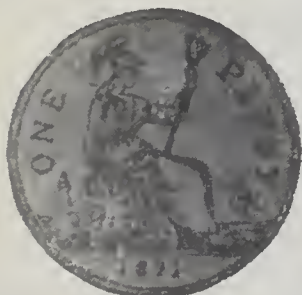
CHANIN, (Jack) — MT060

LOCATION: Philadelphia, Pennsylvania. DATE: 1976.
OBV: Engraved: 'CHANIN/THE/MAGICIAN.'
REV: Blank.
COMPOSITION: NS, R8, V5. 52-S



CHARLTON, CHRIS — MT061

LOCATION: Unknown. DATE: Unknown.
OBV: Imitation English 1d, Victoria head.
REV: a) SEE/ CHRIS CHARLTON/ the famous illusionist/ and/
FULL VARIETY CO./ at/ PALACE THEATRE/ BATH/ FEB. 6th
& week/ twice nightly. b) Save a few/ Pennies and See/
'CHRIS' CHARLTON'/ at the Hippodrome/ Dover/ June 5th,
and week,/ The Magician/ You'll Never/ Forget. c) Save a
few/ Pennies and See/ 'Chris Charlton'/ at "Barnards"
Chatham/ May 15th and week The Magician/ You'll Never/
Forget. d) Save a few/ Pennies and See/ 'Chris Charlton'/ at
the Coliseum,/ Portsmouth June 19th and week/ The
Magician/ You'll Never/ Forget e) Save a few/ Pennies and
see/ 'Chris Charlton'/ at the/ South London Palace/ May
22nd and week/ The Magician/ You'll never/ forget. f) Save
a few/ Pennies and See/ 'Chris Charlton'/ at the/ Grand
Theatre,/ Croydon,/ July 3rd and week/ The Magician/ You'll
Never/ Forget. g) Royalty, Chester, Text unknown. h)
Hippodrome, Eastbourne, Text unknown.
COMPOSITION: Paper, (all), R6, V4. 31-S



CHARLTON, CHRIS — MT062

LOCATION: Unknown. DATE: Unknown.
OBV: Imitation English 1d, tail side dated 1871.
REV: Save a Few/ Pennies and see/ 'Chris Charlton'/ Grand
Theatre/ Croydon/ July 3rd and week/ The Magician/ You'll
Never/ forget.
COMPOSITION: Cardboard, R6, V4. 31-S



CHASE, C. MILTON — MT063

LOCATION: Boston, Massachusetts. DATE: 1890.
OBV: Large eagle in center around: "C. MILTON CHASE •
MECHANICIAN BOSTON".
REV: Standing figure of magician with table on left, "PRO
ARTE MAGICA NE CEDE MALIS".
COMPOSITION: GS, R7, V7; BR, R9, V9; N, R9, V9, GS with
bullseye on eagle's breast, R7, V7. 30 5-R

CHAVEZ STUDIO — MT064

LOCATION: Los Angeles, California. DATE: 1952.
OBV: 7mm hole in center, below is "CHAVEZ/ STUDIO OF
MAGIC" incused.
REV: Blank.
COMPOSITION: AL, R8, V6. 38-R

CHAVEZ STUDIO — MT065

LOCATION: Los Angeles, California. DATE: 1952.
OBV: "CHAVEZ STUDIO" incused.
REV: Plain.
COMPOSITION: ST, R8, V6. 39-R



CHICAGO MAGIC CO. (Herman S. Paine, Prop.) — MT066

LOCATION: Chicago, Illinois. DATE: Unknown.
OBV: Upright hand with coins or balls held between
fingers "CHICAGO MAGIC CO./ CHICAGO, ILL." around
edge.
REV: Same.
COMPOSITION: GS, R5, V4; NpIBR, R7, V5; ST, R6, V5. 31-R

CHICAGO MAGIC CO. — MT067

LOCATION: Chicago, Illinois. DATE: Unknown.
OBV: Hand at angle with coins between fingers, "CHICAGO
MAGIC CO." five stars around edge.
REV: Same.
COMPOSITION: GS, R7, V6. 31.7-R



CHOU-CHOU (Doug Henning) — MT068

LOCATION: Canada. DATE: Unknown.
OBV: Center: full length figure of clown - magician with float-
ing shoe. Around is legend: "CHOU CHOU DIT POUR QUE
LA MAGIC OPERE ACHETEZ DES CHAUSSURES
CANADIENNES"/ *CHOO CHOO SAYS FOR THAT MAGIC
TOUCH BUY CANADIAN MADE SHOES".

REV: Center: Dollar sign. Around is "REMBOURSABLE LORSDE LACHAT DE CHAUSSURES CANADIENNES DANS DES MAGASINS DE CE CENTRE."/ "REDEEMABLE ON PURCHASE OF CANADIAN SHOES AT STORES IN THIS CENTRE."/ "ONE DOLLAR".
COMPOSITION: AL, R4, V4. 31-S

COMTE — MT069

LOCATION: Paris, France. DATE: ca.1830.
OBV: "THEATRE/ COMTE/ A' 6 Hs. 1/2/ PASSAGE CHOISEUL".
REV: "ABONNEMENT/ DE FAMILLE/ BON POUR/ 4/ PERSONNES".
COMPOSITION: C, R7, V8; BZ, R7, V8. 28-S



COMTE — MT070

LOCATION: Paris, France. DATE: Unknown.
OBV: "THEATRE/ COMTE/ A 6 Hs. 1/2/ PASSAGE CHOISEUL".
REV: "ABONNEMENT/ DE FAMILLE/ 1/2/ PLACE/ BON POUR/ 4/ PERSONNES".
COMPOSITION: BR, R7, V8. 27.5-S

COMTE — MT071

LOCATION: Paris, France. DATE: Unknown.
OBV: "THEATRE/ COMTE/ A' 6 Hs. 1/2/ PASSAGE CHOISEUL".
REV: "ABONNEMENT PERPETUAL/ DE FAMILLE/ 1/2 PLACE/ BON POUR/ 4/ PERSONNES".
COMPOSITION: C, R8, V8. 28-S



CONRADI-HORSTER, F.W. — MT072

LOCATION: Berlin, Germany. DATE: 1910.
OBV: Bust right of Kaiser Wilhelm II "WILHELM II. DEUTSCHER KAISER KONIG VON PREUSSEN".
REV: Double headed eagle & Shield around is "ZAUBERAPPARATE FABRIK/ C.B.N".
COMPOSITION: WM, R5, V5. 34-S

CONRADI-HORSTER, F.W. — MT073

LOCATION: Berlin, Germany. DATE: 1910.
OBV: Bust right of Kaiser Wilhelm II, "WILHELM II DEUTSCHER KAISER KONIG VON PREUSSEN".
REV: Double headed eagle & shield, around is "DER GEHEIMNISVOLLE ZAUBERTALER".
COMPOSITION: WM, R7, V6. 34-S

CONRADI-HORSTER, F.W. — MT074

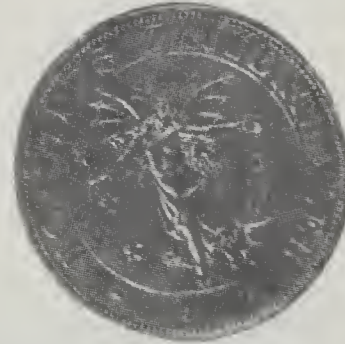
LOCATION: Berlin, Germany. DATE: 1910.
OBV: Bust right of Kaiser Wilhelm II, "HORSTERS AKADEMIE FUR MAGISCHE KUNST/ BERLIN".
REV: Bust right of Kaiser Wilhelm II, "WILHELM II. DEUTSCHER KAISER KONIG VON PREUSSEN".
COMPOSITION: WM, smooth edge, R4, V5; reeded edge, R4, V5; beveled edge, R4, V5. 33.5-S

CONRADI-HORSTER, F.W. — MT075

LOCATION: Berlin, Germany. DATE: 1910.
OBV: Bust right of Kaiser Wilhelm II, "AKADEMIE FUR MAGISCHE KUNST".
REV: Bust right of Kaiser Wilhelm II, "WILHELM II DEUTSCHER KAISER KONIG VON PREUSSEN".
COMPOSITION: WM, R4, V5; Rev: Shell, R5, V3. 33-S

CONRADI-HORSTER, F.W. — MT076

LOCATION: Berlin, Germany. DATE: 1910.
OBV: Goddess of Magic with wand & coins dropping into hat, around "HORSTERS ZAUBERTHALER".
REV: Same.
COMPOSITION: WM, R5, V6; NS, R6, V6; WM, smooth edge, R6, V6. 33.5-R



CONRADI-HORSTER, F.W. — MT077

LOCATION: Berlin, Germany. DATE: 1910.
OBV: Goddess of Magic with wand & coins dropping into hat, around "HORSTERS ZAUBERTHALER".
REV: Same, reversed and incused.
COMPOSITION: NS, R5, V6. 33.5-S



CORTINI (Paul Korth) — MT078

LOCATION: Germany. DATE: 1924.
OBV: Bust left, "MEISTER-MANIPULATOR".
REV: "CORTINI" within wreath.
COMPOSITION: AL, R8, V7; Rev: "WINTERGARTEN BERLIN/ DEZEMBER 1927", R8, V8. 33.5-S

CORTINI (Paul Korth) — MT079

LOCATION: United States. DATE: ca.1925.
OBV: CORTINI.
REV: KEITH-ALBEE/THEATRES.
COMPOSITION: AL, R6, V5. 33.5-S

CORTINI (Paul Korth) — MT080

LOCATION: Various. DATE: Various.
OBV: Bust left, above is "CORTINI".
REV: a) Juli 1934/ Liseberg; b) Dez. 1951/ Palladium/ Dusseldorf; c) Sept. 54./ "KILDEN"/ Aalborg; d) October 54./ National-Scala/ Kobenhavn; e) Alles in Die/ Plaza/ Berlin; f) 1-15 Marz/ Tivoli-Variete/ Hannover; g) 1-31/OKT. 1938/ 3 Linden Variete/, Gr Eroffnungs/ Programm; h) 3 Linden/ 1-31 Marz/ Wertmunze/ Siehe Inserat; i) 1950/ Prosit Neujahr/ Walhalla Theater Wiesbaden; j) April 1935/ Scala/ Berlin; k) Freimarkt 1935/ Central Hallen/ Gross-Variete/ Bremen; l) 1936/ Cinema Royal/ Amsterdam; m) Cortini; n) Dez. 1937/ Theater Variete Vox/ Bucarest; o) 16-31 Marz 1933 Mellini Theater Hannover; p) 16-31 August

Apollo Theater Dusseldorf; q) OD1. Listo Padu/ Teatre-Variete/ Praha; r) Palladium/ London; s) Holborn Theatre/ London; t) 1-31/ Marz/ 3 Linden/ Leipzig; u) Gastspiel/ 16-31 Marz/ Central-Theater/ Wurzburg; v) Juli 1930/ Winter/ Garden/ Berlin; w) Money Makes/ Happy; x) Sept. 1931/ Winter/ Garden/ Berlin; y) Scala-Berlin; z) 1-15 Mai. Urania-Theater/ Konigsberg/ Pr; aa) Sept. 1932/ Hansa-Theater/ Hamburg; bb) 1.-30. Nov./ 1933/ Hansa-Theater/ Hamburg; cc) B.F. Keith-Albee/ & Orpheum Theatres; dd) Aero-Club/ V. Deutschland/ Magischer Zirkel/ Deutschland; ee) 1.-15. OKT./ 1933/ Central-Theater/ Chemnitz; ff) Nojestlatsen/ Heter/ Nojesfaltet; gg) 50% SLEVY; hh) Marz/ Stadtpark/ Kassel; ii) APOLLO Theater/ Mannheim; jj) Februar/ Scala-Essen 1931; kk) 16-30/ Sept. 1935/ 3 Linden Variete/ Grosses/ Programm.

COMPOSITION: AL, (all), R5, V5.

33.5-S



CORTINI (Paul Korth) — MT081

LOCATION: Germany. DATE: 1936.
 OBV: CORTINI/ \$/ 16.-30. 2. 1936/ DER MANN MIT DEN 100000.
 REV: UNSER SCHUMANN/ (two horses & man)/ DAS VOLKSTHEATER.
 COMPOSITION: AL, R6, V5.

33.5-S



CORTINI (Paul Korth) — MT082

LOCATION: Germany. DATE: 1939.
 OBV: CORTINI/ DER/ KONIG/ DER/ ILLUSIONISTEN.
 REV: 16.-30./ Nov. 39/ CIRCUS/ BUSCH BRESLAU.
 COMPOSITION: AL, R8, V6.

23-S

CORTINI (Paul Korth) — MT083

LOCATION: Stockholm, Sweden. DATE: 1954.
 OBV: CORTINI/ CHINA/ VARJE KVALL/ 7.30 9.30.
 REV: OCH/ ETT STRALANDE/ VARIETE/ PROGRAM.
 COMPOSITION: AL, R7, V6.

30-S



CRANDALL, "SENATOR" CLARKE — MT084

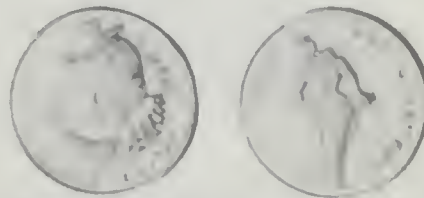
LOCATION: Cicero, Illinois. DATE: Unknown.
 OBV: Decal with "Please return/ to/ SENATOR/ CRANDALL/ MAGIC • MIRTH/ 4820 CERMAK/ CICERO/ The Magic Lounge."
 REV: Embossed four leaf clover.
 COMPOSITION: Fibre poker chip; Red, R7, V4; White, R7, V4; Blue, R7, V4.

39-S

CREMER, W. JNR. — MT085

LOCATION: London, England. DATE: Unknown.
 OBV: Bust left of youthful Queen Victoria, around is "VICTORIA/REGINA".
 REV: "CREMER, JUN./ EVENING ENTERTAINMENTS/ 210 REGENT STREET".
 COMPOSITION: BR, R8, V9.

22-S



"CUTIE" THE CLOWN — MT086

LOCATION: Chicago, Illinois. DATE: 1955.
 OBV: Clown portrait "CUTIE"/ SOCIETY'S FAVORITE CLOWN.
 REV: Rev. of clown figure "GOOD FOR NOTHING/ BUT "JEST" FUN" around.
 COMPOSITION: NS, R8, V7.

26-S

DAARLING — MT087

LOCATION: Copenhagen, Denmark. DATE: Unknown.
 OBV: ALT. 1/ TRYLLE/ ARTIKLER around is "PALAE 1910 - NORREVOLD 96 - KOBENHAVEN, K."
 REV: Rabbit in hat, cards, letters "H" & "P" superimposed, followed by "OKUS".
 COMPOSITION: GT, R7, V6; NS, R7, V6.

33-S

DANTE — MT088

See: Herr Jansen — MT174.

DANTES (Josef Kadlec) — MT089

LOCATION: Czechoslovakia. DATE: Unknown.
 OBV: "MUNDUS VULT DECIPI ERGO VULT DECIPIAT" center field "PRAHA BERLIN BRNO KARL VARY PIZEN".
 REV: "DANTES", Pentacle in center, three linked rings below.
 COMPOSITION: AL, R8, V7.

40-S



DANTINI (Vincent Cierkes) — MT090

LOCATION: Baltimore, Maryland. DATE: 1951.
 OBV: "DANTINI/ HIGH PRIEST OF MYSTERY" around edge, "GOD/ IS/ LOVE" in center.
 REV: "GOOD LUCK" with horseshoe.
 COMPOSITION: AL, R2, V2, coin strike.

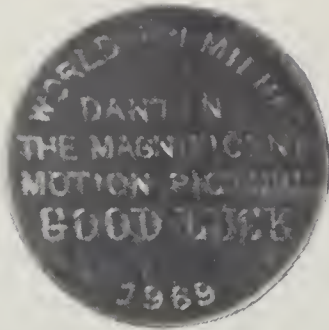
32-S



DANTINI — MT091

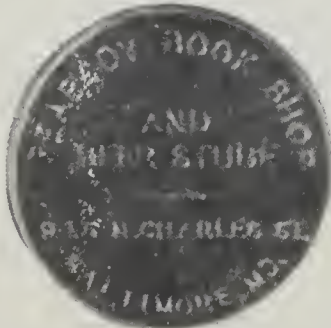
LOCATION: Baltimore, Maryland. DATE: 1960.
 OBV: "★ DANTINI ★ MASTER OF MYSTERY" around edge, "GOD/ IS/ LOVE" in center.
 REV: "GOOD LUCK" with horseshoe.
 COMPOSITION: AL, R2, V2.

32-S



DANTINI — MT092

LOCATION: Baltimore, Maryland. DATE: 1966.
 OBV: "WORLD PREMIERE/ MOTION PICTURE" around edge
 "DANTINI/ STARRING IN/ THE/ GREAT/ VARIETY".
 REV: "MONUMENTAL/ CITY/ BALTIMORE/ MARYLAND/
 GOOD LUCK".
 COMPOSITION: AL, R2, V2. 32-S



DANTINI — MT093

LOCATION: Baltimore, Maryland. DATE: 1969.
 OBV: "WORLD PREMIERE/ DANTINI/ THE MAGNIFICENT/
 MOTION PICTURE/ GOOD LUCK/ 1969".
 REV: "PEABODY BOOK SHOP/ AND/ BEER STUBE/ 913 N.
 CHARLES ST./ BALTIMORE, MD."
 COMPOSITION: AL, R2, V2. 32-S

DANTINI — MT094

LOCATION: Baltimore, Maryland. DATE: 1970.
 OBV: "DANTINI/ STARRING IN/ MY/ BALTIMORE/ MOTION
 PICTURE/ 1970/ GOOD LUCK."
 REV: "PEABODY BOOK SHOP/ AND/ BEER STUBE/ 913 N.
 CHARLES ST./ BALTIMORE, MD."
 COMPOSITION: AL, R2, V2. 32-S

DANTINI — MT095

LOCATION: Baltimore, Maryland. DATE: 1971.
 OBV: "DANTINI/ PRODUCER/ KNEW/ HOUDINI/ (1922-1926)/
 NEW YORK/ CITY".
 REV: "CONTRIBUTOR/ MY/ BALTIMORE/ DOCUMENTARY/
 FILM/ 1971/ GOOD LUCK".
 COMPOSITION: AL, R2, V2. 32-S



DANTINI — MT096

LOCATION: Baltimore, Maryland. DATE: 1972.
 OBV: "DANTINI/ PRODUCER/ KNEW/ HOUDINI/ GOOD LUCK/
 1972".
 REV: "MECHANIC/ — THEATER —/ WORLD/ PREMIERE/
 OUR/ BALTIMORE/ — FILM —".
 COMPOSITION: AL, R2, V2. 32-S

DANTINI — MT097

LOCATION: Baltimore, Maryland. DATE: 1973.
 OBV: "DANTINI/ PRODUCER/ — KNEW —/ HOUDINI/ GOOD
 LUCK".
 REV: "1973/ WORLD/ PREMIERE/ — OUR —/ BALTIMORE/
 DOCUMENTARY/FILM".
 COMPOSITION: AL, R2, V2. 32-S

DANTINI — MT098

LOCATION: Baltimore, Maryland. DATE: 1974.
 OBV: "OUR/ BALTIMORE/ DOCUMENTARY/ FILM/ DANTINI/
 PRODUCER/ GOOD LUCK".
 REV: "1974/ William Donald/ Schaefer/ — MAYOR —/ BALTI-
 MORE/ — CITY —/ MARYLAND."
 COMPOSITION: AL, R2, V2. 32-S



DAVENPORT'S MAGIC SHOP — MT099

LOCATION: London, England. DATE: 1904.
 OBV: Hand with coins, at wrist is "DEMON", around is "THE
 T. NELSON DOWNS/ PALMING COIN".
 REV: Bust right of Downs, around: "T. NELSON DOWNS KING
 OF COINS/ 1904".
 COMPOSITION: NpIC, R6, V6; C, R8, V7. 31-R



DAVIS, MONT JR. — MT099.5

LOCATION: Clarksville, Tennessee. DATE: 1977.
 OBV: "MONT DAVIS, JR./ ★ / MAGICIAN"/ (decoration).
 REV: "GOOD"/ four-leaf clover with 3 stars on each side/
 "LUCK".
 COMPOSITION: BZ, R3, V2. 33-S



DE BIÈRE, ARNOLD — MT100

LOCATION: England. DATE: 1925.
 OBV: "MYSTERY/ DE BIÈRE/ COIN".
 REV: Same.
 COMPOSITION: AL, R7, V7. 33.5-R

DAVIS, JACK (Prop.)

LOCATION: See "Modern Magic Products".

DENTON, THOMAS — MT101

LOCATION: Lambeth, England. DATE: 1795.
OBV: Wheat sheaf, sickle, two doves, and date '17/95'.
REV: "DENTON/ ENGRAVER/ & PRINTER/ 7 MEAD ROW/ NEAR THE/ ASYLUM/ LAMBETH".
COMPOSITION: C, R8, V50. 23-S



DENTON, THOMAS — MT102

LOCATION: London, England. DATE: 1795.
OBV: Full length portrait of dwarf, around is "SIR JEFFREY DUNSTON 1795".
REV: Bust of two men facing center, around "WE THREE BLOCKHEADS BE/ 1795".
COMPOSITION: C, R7, V20. 23-S

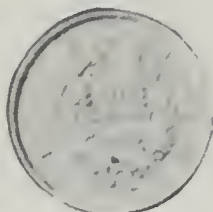
DENTON, THOMAS — MT103

LOCATION: London, England. DATE: 1795.
OBV: Same as MT102
REV: "DENTON/ DEATER/ IN COINS/ HOSPITAL/ GATE/ SMITH-FIELD".
COMPOSITION: C, R7, V30. 23-S

DENTON, THOMAS — MT104

LOCATION: London, England. DATE: 1795.
OBV: Same as rev. of MT102.
REV: Same as rev. of MT103.
COMPOSITION: C, R7, V30. 23-S

In addition to being a dealer in coins, Denton was an engraver and printer. He translated Henri Decremps' "La Magie Blanche Devoilee" publishing it in English as "The Conjuror Unmasked . . ." (London, 1785 & 1788). In 1789, Denton was accused of counterfeiting, and although acquitted of that charge, was found guilty of possessing counterfeiting equipment and was hanged on July 1 of that year.



DE VERE, CHARLES (Herbert S.G. Williams) — MT105

LOCATION: Paris, France. DATE: 1880.
OBV: "PHYSIQUE ★ AMUSANTE/ (wreath) "DE VERE/ FABRICANT/ PARIS".
REV: Same, with blank space above "DE VERE", star under wreath.
COMPOSITION: AL, R8, V8. 38.5-S



DE VERE — MT106

LOCATION: Paris, France. DATE: 1885.
OBV: "DE VERE/ FABRICANT/ PARIS" within wreath, around is "PHYSIQUE ★ AMUSANTE".
REV: Bust of woman facing L, around is "REPUBLIQUE FRAN-CAISE/ DUSEAUX, PARIS".
COMPOSITION: AL, R5, V5; "DUSEAUX, PARIS" or rev missing R5, V5. 36.5-S

DE VERE — MT107

LOCATION: Paris, France. DATE: Unknown.
OBV: Laurel wreath, blank inside.
REV: Same as MT106.
COMPOSITION: AL, R6, V5. 36.5-S

DE VRIES, JOHN — MT108

LOCATION: Unknown. DATE: Unknown.
OBV: Blank - plain disc - name handwritten on.
REV: Blank.
COMPOSITION: BR, R8, V4; C, R8, V4; AL, R8, V4. 32-S

D' HENNY — MT109

LOCATION: France. DATE: Unknown.
OBV: Wreath, shield, D' Henny's name & address.
REV: Text referring to winning a prize at the Theatre Robert-Houdin.
COMPOSITION: AL, R8, V7. U-R



DICKMANN, PROF. — MT110

LOCATION: Paris, France. DATE: 1900.
OBV: "7/R DE L'EURE/ PARIS" in wreath, around is "STUDIO DE MAGIE/ PROF. DICKMANN".
REV: Bust of woman facing left, around is "REPUBLIQUE FRAN-CAISE".
COMPOSITION: AL, R6, V6. 36.5-S

DICKMANN, PROF. — MT111

LOCATION: Paris, France. DATE: 1900.
OBV: "71/R. RAMBUTEAU/ • PARIS" within wreath, around is "INSTITUT DE MAGIE/ PROF. DICKMANN".
REV: Bust of woman facing left, around is "REPUBLIQUE FRAN-CAISE".
COMPOSITION: AL, R6, V6. 36.5-S



DI - DI — MT112

LOCATION: Karlovy Vary, Czechoslovakia. DATE: 1975.
OBV: Four-tiered fountain with "DIVADLO DIVO/ KARLOVY VARY"/ DI DI/ (wand)/ EXPERIMENTO/ MAGICO.
REV: MAGIALES/ "CMS" in Ace of Spades figure/ KARLOVY VARY/ (wand).
COMPOSITION: AL, R5, V5. 34-S



DISNEYLAND MAGIC SHOP — MT113

LOCATION: Anaheim, California. DATE: 1972.
 OBV: Castle "© WALT DISNEY PRODUCTIONS"
 "DISNEYLAND" at bottom.

REV: In 5 sections, showing "MAIN STREET" "FRONTIERLAND", "FANTASYLAND", "ADVENTURELAND", TOMORROWLAND".

COMPOSITION: BZ, R2, V2. 35-S

Although this would appear to be merely an association piece, it was sold in the Disneyland Magic Shop with a little pamphlet describing five tricks that could be done with the coin.



DOWNS, T. NELSON — MT114

LOCATION: U.S.A. DATE: 1904.
 OBV: Hand with row of coins, "THE T. NELSON DOWNS/ PALMING COIN". "FOREIGN" at wrist.

REV: Bust right, "T. NELSON DOWNS KING OF COINS 1904" around edge.

COMPOSITION: WM, R1, V1. 30.5-R

DOWNS, T. NELSON — MT115

LOCATION: U.S.A. DATE: 1904.
 OBV: Same as MT114, except no word at wrist.
 REV: Same as MT114.

COMPOSITION: WM, R2, V2; NpIC, R4, V3; C, R8, V5. 30.5-R



DUCROT, FRANK (?) — MT116

LOCATION: New York, New York. DATE: 1935.
 OBV: "MAHATMA GANDHI INDIA COIN MYSTERY". Part 1: Steel box 25mm in diameter, 7¼mm deep, cover "MAHATMA/ GANDHI". Part 2: Stamped shell with hindu face in center, silver colored. Part 3: Copper coin, obv: shield, two rampant lions. Rev: Wreath, "MAHATMA/ GANDHI/ INDIA/ 1932". Part 4: Same as 3, except rev. is silver colored.

REV: Blank, except for Part 3 and Part 4.
 COMPOSITION: (Set), R7, V6.

DUXON — MT117

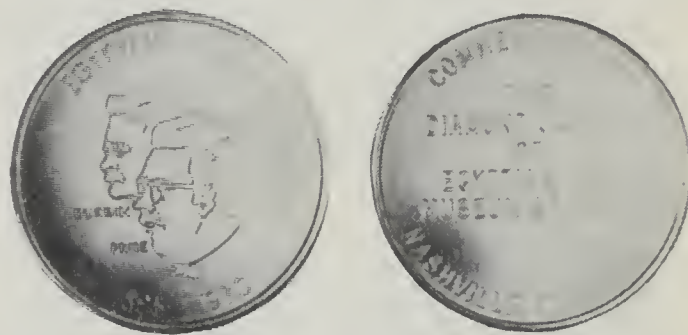
LOCATION: Czechoslovakia. DATE: Unknown.
 OBV: "A MANIPULATOR DUXON MISTR KOUZEL i ILLUSI", around is "MODERN MAGIC DUXON MAGICKY PENIG".
 REV: "UNITED STATES OF AMERIKA"/ "15 DOLLARS", eagle design.
 COMPOSITION: AL, R7, V7. 38-S



EAGLE MAGIC FACTORY (Collins Pentz) — MT118

LOCATION: Minneapolis, Minnesota. DATE: 1935.
 OBV: Center "EAMAF" in diamond, EAGLE MAGIC/ FACTORY" around edge.

REV: Same.
 COMPOSITION: GS, R7, V7. 30.5-S



EGYPTIAN HALL (Museum) (Price, Dave) — MT119

LOCATION: Nashville, Tennessee. DATE: 1970.
 OBV: Two busts left, "DURBIN" and "PRICE". "EGYPTIAN HALL/ 1895 1970" around edge.

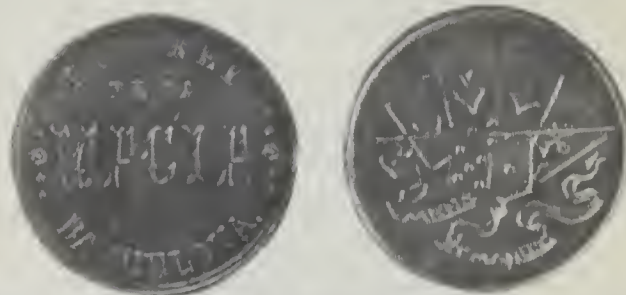
REV: "COMMEMORATING/ THE/ DIAMOND JUBILEE/ OF/ EGYPTIAN HALL/ MUSEUM OF MAGIC/ NASHVILLE, TENNESSEE."

COMPOSITION: GS, R2, V3. 32-S

EGYPTIAN HALL (David Price, Prop.) — MT120

LOCATION: Nashville, Tennessee. DATE: 1972.
 OBV: Sphinx, pyramid and star in center, around is EGYPTIAN HALL/ MUSEUM OF MAGICAL HISTORY".

REV: Blank.
 COMPOSITION: Gold paper seal, R2, V2; Red paper seal, R2, V2. 50
 (Also see MT270)



EL REY DE LA MAGIA (Carlos Bucheli, Prop.) — MT121

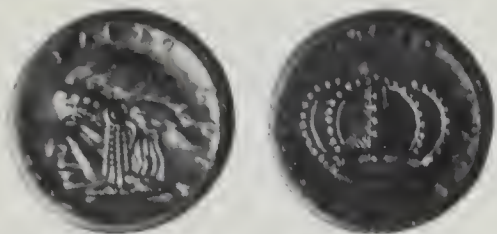
LOCATION: Barcelona, Spain. DATE: 1945.
 OBV: "EL REY/ DE LA/ MAGIA/ BARCELONA".
 REV: Four cards with a die, wand and ribbon below with inscription "MENS ET MANUS".

COMPOSITION: NS, R8, V7. 37.5-S

EL REY DE LA MAGIA — MT122

LOCATION: Barcelona, Spain. DATE: 1945.
OBV: Same as MT121.
REV: "PRESTIDIGITACION/ Y/ ESCAMATEO".
COMPOSITION: NS, R8, V7.

39-S



EMPERESS MAGIC COIN — MT123

LOCATION: Japan. DATE: 1935.
OBV: Indian Head facing left around "EMPERESS MAGIC COIN".
REV: Crown, around "EMPERESS MAGIC COIN/ MADE IN JAPAN".
COMPOSITION: LD/GT, R7, V7; LD/Npl, R5, V6.

30.5-R

EPERNY — MT124

LOCATION: Austria. DATE: Unknown.
OBV: "E".
REV: Blank.
COMPOSITION: Gold paper seal, R6, V2; Red paper seal, R6, V2; Red paper seal, 38mm, R6, V3.

23-Scalloped



FAY, ANNA EVA — MT129

LOCATION: U.S.A. DATE: 1905.
OBV: Seated Hindu goddess in center, "MASCOT/ AEF".
REV: Hieroglyphic figures around edge, wreath, inside: "AYX/ 70d/ 770".
COMPOSITION: C, struck without a collar, irregular size & shape, R5, V5.

Irregular-S



FAY, ANNA EVA — MT130

LOCATION: U.S.A. DATE: 1905.
OBV: Seated Hindu goddess in center, around: "MASCOT/ AEF".
REV: Hieroglyphic figures around edge, wreath, inside 'AYX/ 70d/ 770".
COMPOSITION: C, R9, V8.

36.5-S



EPERNY, C. — MT125

LOCATION: Austria. DATE: Unknown.
OBV: "THE EPERNYS/ MYSTERIES/ OF/ MAGIC".
REV: Blank.
COMPOSITION: Red paper seal, R6, V5.

Unknown-Scalloped

EVANS, BERTRAM — MT126

LOCATION: Birmingham, England. DATE: Unknown.
OBV: "BERTRAM EVANS/ MAKER/ 54 ALBION ST. BIRMM.".
REV: Blank.
COMPOSITION: NS, R7, V5.

32-R

EVANS, HAROLD S. — MT127

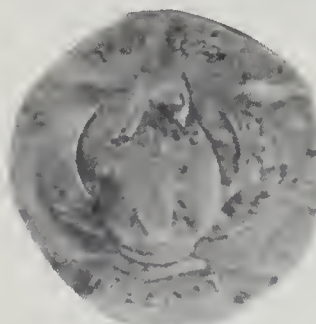
Birmingham, England. DATE: Unknown.
OBV: c/s "MADE BY/ HAROLD J. EVANS/ 54 ALBION ST./ BIRM."
REV: Blank.
COMPOSITION: NS, R7, V5.

32-R

FAY, ANNA EVA — MT131

LOCATION: U.S.A. DATE: 1905.
OBV: Arabic type lettering around edge, circle, inside: "MASCOT/ AEF".
REV: Hieroglyphic figures around edge, circle, wreath, inside "AYX/ 70d/ 770".
COMPOSITION: C, R7, V7; BR, R7, V7.

24-S



FASTER, WILLI — MT128

LOCATION: Germany. DATE: Unknown.
OBV: Bust left, above is "WILLI ----- FASTER".
REV: "ICH BRINGE DIR GLUCK/ MAGISCH. ZIRKEL MUNCHEN".
COMPOSITION: AL, R6, V6.

34.5-S

FAYS, THE — MT132

LOCATION: U.S.A. DATE: 1910.
OBV: EGYPTIAN figure in center, "THE FAYS" above, "MASCOT" below.
REV: Hieroglyphic figures, "THE FAYS" above, "MASCOT" below".
COMPOSITION: C, R5, V5; Iron (magnetic) R7, V6.

Irregular-S

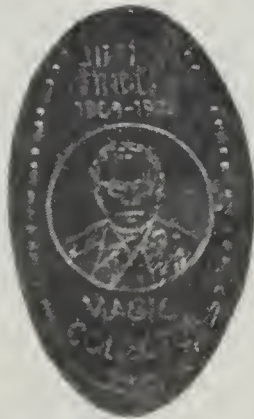


FELSMAN, (Arthur P.) — MT133

LOCATION: Chicago, Illinois. DATE: 1930.
OBV: Center female figure with wand, dropping coins into hat.
Around: "★ MAJA. GODDESS OF MAGIC MAJA. ★ / A.P.F."
REV: Same.
COMPOSITION: GS, 38.3mm, R2, V2; GS, 31mm, R2, V2. R

FINDLAY, J. — MT134

LOCATION: Scotland. DATE: 1961.
OBV: "A.W.S./ JUBILEE/ 1911-61"
REV: "J. FINDLAY"
COMPOSITION: AL, R8, V4. V-R



FINDLAY, JIMMY — MT135

LOCATION: Scotland/England. DATE: 1976.
OBV: JIMMY/ FINDLAY/ 1904-1973/ (bust of Findlay)/ MAGIC/ COLLECTOR/ TMC-4"
REV: Coin image. Elongated coin.
COMPOSITION: U.S. 1¢ - 1971, R4, V1; Eng. 1d - 1973, R4, V1; Eng. 10d - 1973, R8, V4.



FRANK, FELIX — MT136

LOCATION: Czechoslovakia. DATE: Unknown.
OBV: Magician in conical hat standing behind table, above "MAGIC COINS" on edge of table "FELIX FRANK".
REV: Same.
COMPOSITION: WM, 34mm, R7, V6; WM, 33mm, R7, V6. S



FREITAL, M.Z. — MT137

LOCATION: Germany. DATE: 1964.
OBV: "MZ/ FREITAL/ 14.3./ 1964".
REV: Blank.
COMPOSITION: AL, R5, V4. 30.5-S

FRENCH — MT138

LOCATION: Clarksburg, Ohio. DATE: 1863.
OBV: GROCERIES & NOTIONS/ SOLD BY/ ONE/ FRENCH/ CLARKSBURG, O.
REV: Indian head, 1873.
COMPOSITION: C, R7, V8. 19-S
(See also MT173) Civil War Token Ohio 170-A

French and (later) his partner, James, ran a grocery store in Clarksburg, Ohio, in the period 1863-65. They were both proficient magicians, and after they dissolved their partnership they performed their magic on showboats in the area.



GAMAGE — MT139

LOCATION: London, England. DATE: 1935.
OBV: Bust right of man inside circle, around is "three stars/ GAMAGIC/ three stars/ GAMAGIC".
REV: Same.
COMPOSITION: WM, R3, V4. 30.5-R



GAMBLE, RAY — MT140

LOCATION: U.S.A. DATE: 1935.
OBV: Seated elephant, "GOOD LUCK".
REV: "GAMBOL/ WITH/ GAMBLE".
COMPOSITION: BR, 35mm, R6, V5; BR, 28mm, R6, V5; BR, 22mm, R6, V5. V-S

GEE, J. — MT141

LOCATION: Belgium. DATE: Unknown.
OBV: Engraving of the badge of "CIRCLE BELGE".
REV: Unknown.
COMPOSITION: V, R8, V7. U-U



GERMAN MAGIC CIRCLE — MT142

LOCATION: Baden - Baden. DATE: 1975.
OBV: Globe with three-tiered fountain, around is "I. EUROPA KONGRESS D. MAGIE BADEN-BADEN 9. - 13. JULI 1975/ MZVD/ IBM GERMANY".
REV: Same.
COMPOSITION: AL, R5, V5. 38-S

GERMAN MAGISCHE ZIRKEL — MT143

LOCATION: Oldenburg Convention. DATE: 1951.
OBV: Pentacle in center field, no wording.
REV: Same.
COMPOSITION: GT, R7, V7.

U-S



GO-GO NOVELTY CO. — MT144

LOCATION: Rochester, New York. DATE: 1935.
OBV: GO-GO NOVELTY CO. ROCHESTER, N.Y./ (PATENT PENDING)/ center eagle GO-GO/ coin.
REV: Same.
COMPOSITION: C, R8, V7. 32-S

GOLDEN GATE MAGIC SHOP — MT145

LOCATION: San Francisco, California. DATE: Unknown.
OBV: GOLDEN/ GATE/ MAGIC/ star/ SAN Francisco 5, CALIFORNIA.
REV: (Same as Ludlow Hindoo - See MT217).
COMPOSITION: BZ, reeded edge, R7, V7; BZ, smooth edge, R7, V7. 30.5-V

GORDIEN, HENRY — MT146

LOCATION: Unknown. DATE: Unknown.
OBV: "HENRY GORDIEN/ MAGICAL HUMORIST".
REV: "KEEP ME AND YOU WILL HAVE GOOD LUCK".
COMPOSITION: AL, encased cent, R8, V7. 32.5-S



GREEN RIVER WHISKEY — MT147

LOCATION: U.S.A. DATE: 1935.
OBV: Tramp figure holding horse's reins, "GREEN RIVER WHISKEY" above, "THE WHISKEY WITHOUT REGRETS" below.
REV: Four leaf clover, horseshoe, wishbone, "IT'S LUCKY TO DRINK/ GREEN RIVER/ WHISKEY".
COMPOSITION: C, R1, V2; Chrome plated, R3, V4; C, reeded edge, R2, V3. 33-P

This would appear to be an association piece, but it is felt that it deserves to be considered a magic token in its own right. See reference in Appendix.



GRIFFIN, KEN — MT148

LOCATION: U.S.A. DATE: 1966.
OBV: Bust facing right, "AMERICA'S GREAT TOURING ILLUSIONIST/ KEN GRIFFIN".
REV: Seated female figure, "THIS COIN WILL BRING YOU LUCK/ ROBERTA".
COMPOSITION: BR, R3, V3; AL, R3, V3. 39.5-S

HACKMAN, ELI — MT149

LOCATION: Philadelphia, Pennsylvania. DATE: 1887
OBV: VENTRILOQUISM/ star/ MAGIC/ star/ PUNCH & JUDY/ ELI HACKMAN/ ENTERTAINER/ PHILADELPHIA PA/ PHONE/ SEE DIRECTORY/ star 219 W. QUEEN LANE star
REV: Magician pulling rabbit from hat/ "Y".
COMPOSITION: AL, R8, V8. 30.5-R
Reverse die same as Yost MT357.

HAMLEY'S — MT150

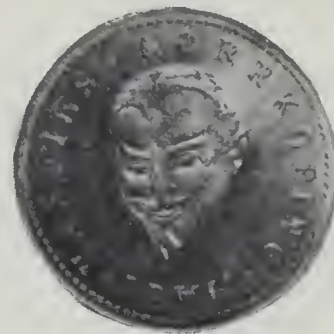
LOCATION: London, England. DATE: ca.1900.
OBV: Figure of Neptune with serpent and trident, around "HAMLEY'S MAGICAL SALOONS/ 229 HIGH HOLBORN LONDON".
REV: Sphinx head, around, "HAMLEY'S LATE BLANDS MAGICAL PALACE/ 35 NEW OXFORD ST. LONDON".
COMPOSITION: NS, R6, V6; GT, R8, V7. 31-R

HANDY, JACK

(See: Yachandee)

HARMON, (Dr.) — MT151

LOCATION: U.S.A. DATE: 1925.
OBV: Egyptian scene with Sphinx and Pyramids.
REV: "LOVE/ HARMON/ LUCK".
COMPOSITION: C, R8, V6. 25-S



HARRIES — MT152

LOCATION: Sweden. DATE: 1950.
OBV: Devil's head, around is "HARRIES • NORRKOPING • MAGI".
REV: Devil waving wand over flowers, coins dropping from other hand.
COMPOSITION: AL, R4, V4; NpIC, R5, V4. 33.5-S

HARTO, JAMES S. — MT153

LOCATION: U.S.A. DATE: 1935.
OBV: MAGIC design (engraved on a Go-Go Novelty Co. token).
REV: Go-Go Novelty Co. MT144.
COMPOSITION: C, R8, V4. 30.5-S

HASELMAYER — MT154

LOCATION: New York City, New York. DATE: 1870.
OBV: Shell: Liberty Head left, "1868".
REV: Insert: Brass colored cardboard disc, "HASELMAYER/ ESCAMOTEUR/ AND/ PROFESSOR/ OF/ MUSIC/ MADE BY RICHARDS & MARKET/ (?) MURRAY ST., N.Y."
COMPOSITION: BR, R10, V100. U-U
Shellcard (Rulau 287)



HAVEL, JOSEF — MT155

LOCATION: Czechoslovakia. DATE: Unknown.
 OBV: Sphinx head, above "KOUZELNA MINCE PRO STESTI" below: four card pips.
 REV: View of Karlbrucke Bridge, at bottom are initials "J.H."
 COMPOSITION: AL, R6, V6; LD, R6, V6; BR with copper finish, R6, V6. 31-S

HAYS, MELVIN — MT156

LOCATION: Cincinnati, Ohio. DATE: 1976.
 OBV: star/ FAY MAGIC star/ MELVIN HAYS/ P.O. BOX 24049/ CINCINNATI/ OHIO 45224/ star TOKEN SPECIALIST star.
 REV: Indian head left, around is "UNITED STATES BICENTENNIAL/ 1776-1976".
 COMPOSITION: C, R2, V2; NpIC, R7, V3. 20.5-S



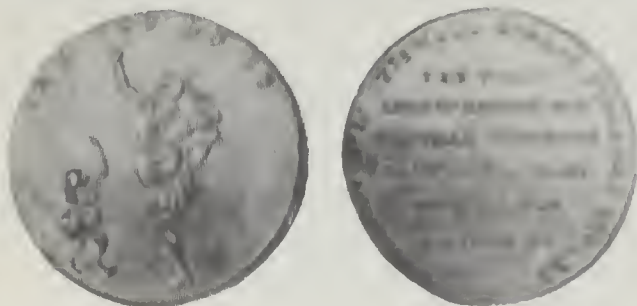
HERIOT, (Professor) — MT157

LOCATION: England. DATE: 1915.
 OBV: HERIOT incused.
 REV: Plain.
 COMPOSITION: NS, R7, V6. 32-R



HERRMANN THE GREAT — MT158

LOCATION: Unknown. DATE: 1903.
 OBV: HERRMANN THE GREAT/ (bust portrait)/ DIRECTION T HURNAER & GORMAN.
 REV: (Four leaf clover, horseshoe, wishbone) GOOD LUCK/ KEEP ME AND PROSPER.
 COMPOSITION: AL, R8, V7. (Encased 1901 cent) 38-S



HESLOP, R. — MT159

LOCATION: London. DATE: 1795.
 OBV: Contortionist and monkey, above is "CAN YOU DO SO".
 REV: Around is "R. HESLOP No. 86 CHISWELL STREET FINSBURY SQUARE" inside is "THE FIRST/ SHOP IN LONDON FOR/ NATURAL CURIOSITYS/ PAINTINGS, COINS/ COLOURS FOR/ ARTISTS & C."
 COMPOSITION: C, R6, V7. 29-S

Heslop's shop in London was well known for selling conjuring supplies, as well as the other items listed on his token.

HIMBER, RICHARD — MT160

LOCATION: New York City, New York. DATE: 1965.
 OBV: Copper-coloured coin with Chinese characters similar to the Ken Allen coin, with heavily mottled background.
 REV: Same.
 COMPOSITION: C, solid coin, R4, V3; C, 7.5mm hole in center, R4, V3. 31.5-S

HO HI WHANG

(SEE: "Magi Genii")



HOKUS-POKUS — MT161

LOCATION: Czechoslovakia. DATE: Unknown.
 OBV: Horseshoe opening down with "GOOD LUCK" above: "HOKUS-POKUS".
 REV: Four Aces.
 COMPOSITION: WM, R7, V6. 34-S

HOKUS-POKUS — MT162

LOCATION: Czechoslovakia. DATE: Unknown.
 OBV: Horseshoe opening down with "GOOD LUCK", above: "HOKUS-POKUS".
 REV: Same, but incused, reversed.
 COMPOSITION: NS, R7, V6. 34-S



HOLDEN — MT163

LOCATION: New York. DATE: 1935.
 OBV: Rabbit in hat with wand, around "HOLDEN PALMING COIN".
 REV: Same.
 COMPOSITION: GS, 39mm, R2, V3; ST, 39mm, R3, V3; GS, 31.25mm, R2, V3. V-R

HOO COIN — MT164

LOCATION: U.S.A. DATE: 1940.
 OBV: "HOO"/ design/ "COIN".
 REV: "MAGIC"/ design/ "COIN".
 COMPOSITION: LD/Npl, R5, V3. 31-S

HORSTER

(See Conradi-Horster)



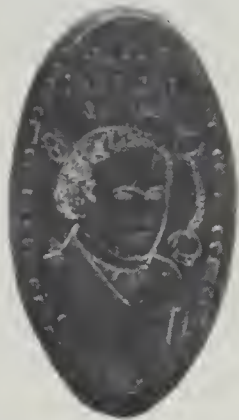
HOUDINI, HARRY — MT165

LOCATION: (Mfg. by the Franklin Mint). DATE: 1974.
 OBV: Bust left of Houdini "100TH ANNIVERSARY OF THE BIRTH OF HARRY HOUDINI • 1874 • 1974".
 REV: Standing figure and shackled arms, "MY CHIEF TASK HAS BEEN TO CONQUER FEAR".
 COMPOSITION: BZ, R1, V2; S, R4, V7. 39-R



INTERNATIONAL BROTHERHOOD OF MAGICIANS — MT168

LOCATION: Kenton, Ohio. DATE: 1935.
 OBV: World with Mercury, 2 hands shaking, oak leaf, "I.B.M." around is "THE INTERNATIONAL BROTHERHOOD OF MAGICIANS".
 REV: "ST. LOUIS/ BUTTON CO".
 COMPOSITION: NS, R5, V4. (Badge fob) 39-S



HOUDINI, HARRY — MT166

LOCATION: U.S.A. DATE: 1974.
 OBV: "HARRY/ HOUDINI/ 1874-1926/ (bust right of Houdini)/ TMC-2".
 REV: Coin design. Elongated coin.
 COMPOSITION: U.S. 1¢ - 1974, R2, V1; Canada 1¢ - 1974, R5, V1; U.S. 1¢ - 1926, R7, V3; U.S. 10¢ - 1926, R8, V5.



INTERNATIONAL FELLOWSHIP OF ROTARY - MAGIC — MT169

LOCATION: Corning, New York. DATE: 1975.
 OBV: "THE FATHER OF MODERN CONJURING"/ bust/ "ROBERT-HOUDIN".
 REV: Rotary emblem "SERVICE ABOVE SELF/ TRUTH • HUMANITY • JUSTICE".
 COMPOSITION: BZ, R8, V4; AL, R6, V3; NS, R8, V4; S, R8, V7. 34-S

IRELAND, L.L. — MT170

LOCATION: Chicago, Illinois. DATE: 1935.
 OBV: Magician pulling rabbit from hat, around: "ONE NECROMANTIC COIN/L.L.I."
 REV: Same.
 COMPOSITION: GS, R2, V2; ST, R4, V3; CP, R6, V3; BR, R7, V5. 38.2-R



HURT, BOB — MT167

LOCATION: Lafayette, Indiana. DATE: 1965.
 OBV: Rabbit pulling magician from hat, "BOB HURT".
 REV: "CLOWN MAGICIAN"/ "BOB" with clown head inside "O"/ BOX 913, LAFAYETTE, INDIANA.
 COMPOSITION: AL, R1, V3. 32-S



IRELAND MAGIC CO. — MT171

LOCATION: Chicago, Illinois. DATE: 1959.
 OBV: Magician pulling rabbit from hat, around "ONE NECROMANTIC COIN/I.M.C."
 REV: Bust portrait left, "JAY/MARSHALL".
 COMPOSITION: GS, R1, V2; ST, R3, V3; CP, R6, V3. 31.2-R

ISELL'S MAGIC BAR — MT172

LOCATION: Chicago, Illinois. DATE: Unknown.
OBV: Rabbit in hat with cocktail glass, "ISELL'S/ MAGIC BAR/ 590 DIVERSEY".
REV: "ISELL'S/ 25/ RESTAURANT".
COMPOSITION: BR, R8, V6. 24-S

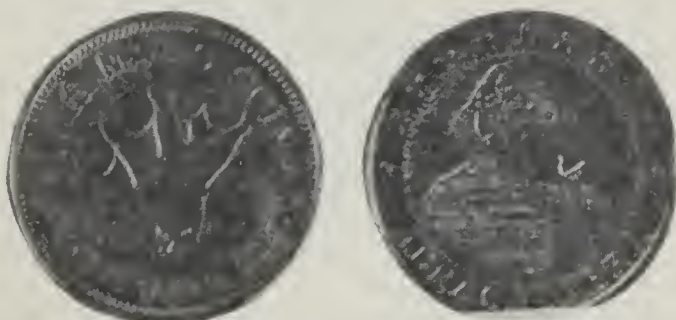
JAMES & FRENCH — MT173

LOCATION: Clarksburg, Ohio. DATE: 1863.
OBV: JAMES & FRENCH/ HAVE/ IT!/ CLARKSBURG/ OHIO.
REV: Indian head, 1873.
COMPOSITION: C, R7, V8. 19-S
Civil War Token, Ohio 170-B. Also see MT138.

HERR JANSEN (Dante) — MT174

LOCATION: New York City, New York. DATE: 1908.
OBV: Magician with top hat in hand, coins around "HERR JANSEN/ COIN EXPERT".
REV: Hand with coins "HERR JANSEN/ SUCCESS".
COMPOSITION: GS, R7, V9. 31-R

Harry Jansen was born in Denmark and came to the United States in 1888 at the age of six. In 1907 he opened a magic shop in Chicago in partnership with Charles Halton. He went on tour four years later, but he did not attain lasting fame until 1923, when Howard Thurston hired him to run one of Thurston's road companies under the name "Dante".



JAPAN MAGIC SHOP — MT175

LOCATION: Tokyo, Japan. DATE: 1964.
OBV: Hand holding balls, wand at wrist, around is: "J.M.S. MAGIC COIN/ CHIKARASHOBO, TOKYO."
REV: Sphinx with stars above, below is "ABRACADABRA".
COMPOSITION: NS, R5, V6. 31.5-R



JASHUMON MAGIC CLUB — MT176

LOCATION: Tokyo, Japan. DATE: 1964.
OBV: Phoenix like bird.
REV: "JASHUMON 1964".
COMPOSITION: LDplGD, R8, V7; LDplS, R8, V7. 38.5-R



JUZA ZIZKOV — MT177

LOCATION: Czechoslovakia. DATE: Unknown.
OBV: Hands holding wand and top hat, rabbit coming from hat, "JUZA ZIZKOV".
REV: Same.
COMPOSITION: AL, R5, V5; ST, R6, V5. 34-S



KALANAG — MT178

LOCATION: Unknown. DATE: Unknown.
OBV: Bust right, around is "PRASIDENT DES MAGISCHEN ZIRKELS", signature in script "HELMUT SCHREIBER".
REV: Blank.
COMPOSITION: NS, R7, V7. 52x73-S

KANTER, MIKE — MT180

LOCATION: Philadelphia, Pennsylvania. DATE: 1949.
OBV: Devil's head, "MAGIC SHOP/ PHILADELPHIA, PA".
REV: Same.
COMPOSITION: NS, R3, V4. (Restrike using the same dies as MT274.) (Medal struck) 31-R



KARKUT, CHET — MT 180

LOCATION: Shelton, Connecticut. DATE: 1965.
OBV: (Caricature) portrait.
REV: MAGICIAN/ CHET KARKUT/ 38 CARLEY STREET/ SHELTON/ CONN.
COMPOSITION: Green cardboard, R2, V1; White cardboard, R2, V1. 46-S



KARKUT, CHET — MT181

LOCATION: Shelton, Connecticut. DATE: 1967.
OBV: "MAGIC/ CHET KARKUT/ 734-4230".
REV: Same.
COMPOSITION: Cardboard disc w/metal border. Red, R2, V2; Yellow, R2, V2; Green, R2, V2; White, R2, V2. 31-S



KARKUT, CHET — MT182

LOCATION: Shelton, Connecticut. DATE: 1965.
 OBV: CHET KARKUT/ shield design.
 REV: ROUND/ OUT YOUR/ ENTERTAINMENT/ NOVELTY -
 M.C./ MAGIC/ PHONE/ 734-4230.
 COMPOSITION: Green cardboard, R2, V2; rev. same as obv.,
 R2, V2. 46-S

KARKUT, CHESTER — MT183

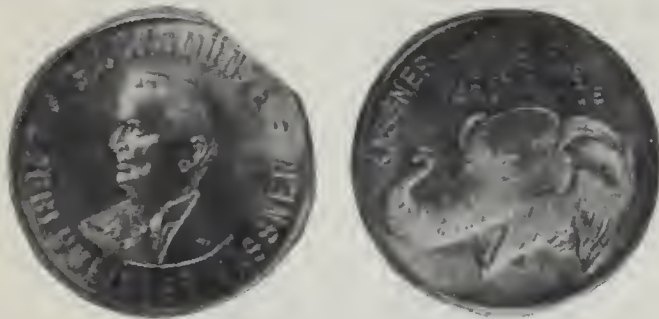
LOCATION: Shelton, Connecticut. DATE: 1976.
 OBV: "CHESTER KARKUT/ MAGICIAN/ star SHELTON, CT.
 star."
 REV: Same, design reverse and incuse.
 COMPOSITION: Embossed paper with metal edges: Red ink,
 R8, V3; Blue ink, R8, V3; Red & Blue ink, R8, V3. 58-S

KARLOVY VARY KONGRESS — MT184

LOCATION: Czechoslovakia. DATE: 1969.
 OBV: "KARLOVY VARY KONGRESS 1969" within triangular
 design.
 REV: Blank.
 COMPOSITION: GP, R5, V5. 26-S

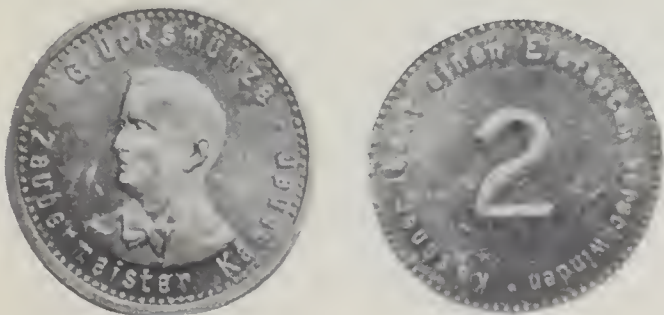
KARLOVY VARY KONGRESS — MT185

LOCATION: Czechoslovakia. DATE: 1967.
 OBV: Global design with "CSSR", center field is "MAGIE 1967
 KARLOVY VARY".
 REV: Blank.
 COMPOSITION: BZ, R5, V7. 50-S



KASSNER — MT186

LOCATION: Germany. DATE: 1935.
 OBV: Bust left, around is "GLUCKSMUNZE/ ZAUBERMEIS-
 TER KASSNER".
 REV: Elephant head, above is "KASSNER LASST EINEN/
 ELEFANTEN/ VERSCHWINDEN".
 COMPOSITION: AL, R5, V4; WM, R5, V4. 32-S



KASSNER — MT187

LOCATION: Germany. DATE: 1935.
 OBV: Bust left, around is "GLUCKSMUNZE/ ZAUBERMEISTER
 KASSNER".
 REV: Large "2", around is "KASSNER LASST EINEN ELEFAN-
 TEN VERSCHWINDEN".
 COMPOSITION: AL, R5, V4. 32-S

KASSNER — MT188

LOCATION: Germany. DATE: 1933.
 OBV: Same as MT187.
 REV: Large "2", around is "MARZ 1933 LIEBICH BRESLAU".
 COMPOSITION: AL, R6, V5. 32-S

KASSNER — MT189

LOCATION: Germany. DATE: 1936.
 OBV: Bust left, around is "GLUCKSMUNZE/ ZAUBERMEISTER
 KASSNER".
 REV: "JUNI 1936/ CENTRAL THEATER/ DRESDEN", around
 is "KASSNER LASST EINEN ELEFANTEN VERSCH-
 WINDEN".
 COMPOSITION: AL, R6, V5. 32-S



KASSNER — MT190

LOCATION: Germany. DATE: 1935.
 OBV: Bust facing front.
 REV: "5", around is "ZAUBERSCHAU/ KASSNER".
 COMPOSITION: AL, R5, V5. 39.5-S

KASSNER — MT191

LOCATION: Germany. DATE: 1937.
 OBV: Bust left in plain field.
 REV: "5", around is "ZAUBERSCHAU/ KASSNER".
 COMPOSITION: AL, R5, V5. 39.5-S



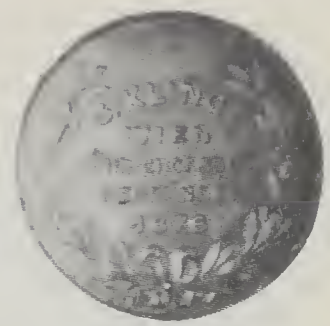
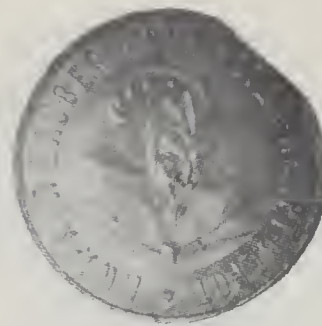
KEENE (J.P. Culbertson) — MT192

LOCATION: Carlisle, Pennsylvania. DATE: 1930.
 OBV: Portrait, (holed thru forehead, as issued).
 REV: INVENTOR/ KEENE/ MAGICIAN.
 COMPOSITION: Pink cardboard, R6, V4; Blue cardboard, R6,
 V4. 42-S



KELLNER, A. — MT193.

LOCATION: Czechoslovakia. DATE: 1959.
OBV: Bust left, shadow of devil's head, "STALETA TRADICE
RODU KELLNERU/A. KELLNER".
REV: Shield with initials "A.K." top hat & "1959", around
"KOUZELNA ROSINY REVUE/CSR".
COMPOSITION: AL, R6, V6. 29.5-S



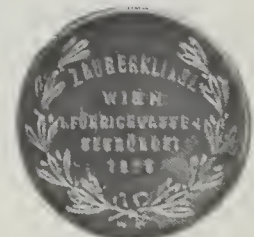
KLINGL, S — MT200

LOCATION: Vienna, Austria. DATE: 1876.
OBV: Devil's head center, around is "I. WIENER ZAUBER •
APPARATEN - HAUPT - DEPOT".
REV: Wreath "S. KLINGL/ WIEN/ FUHRICHGASSE 4/ GEG-
RUNDET/ 1876".
COMPOSITION: NS, R4, V5; WM, R4, V5; C, R5, V6; NpIBR,
R5, V6; GT, R6, V6. 32-R



KELLNER, FRANTISEK — MT194.

LOCATION: Czechoslovakia. DATE: 1930.
OBV: Bust of man, "FRANTISEK KELLNER 1875-1930".
REV: Top hat and cane, "ZAHLDATEL KOUZELNICKEHO
RODU/ KELLNERU".
COMPOSITION: AL, R6, V6. 29-S



KLINGL, S. — MT201

LOCATION: Vienna, Austria. DATE: 1958.
OBV: Devil figure with church & ferris wheel "I. WIENER
ZAUBER - APPARATEN - HAUPT - DEPOT".
REV: Wreath, "ZAUBER KLINGL/ WIEN/ 1. FUHRICHGASSE
4/ GEGRUNDET/ 1876".
COMPOSITION: NS, R4, V4; GT, R3, V4. 31-R

KERR, JO. — MT195

LOCATION: Germany. DATE: 1960.
OBV: Rabbit in hat, "JO KERR" (hand engraved).
REV: Pentacle design.
COMPOSITION: Unknown, R10, V-N/C. U-U

KORT, MILTON — MT202

LOCATION: Detroit, Michigan. DATE: 1943.
OBV: "KORT".
REV: Blank.
COMPOSITION: Red, green & yellow plastic: black letters -
39mm, R8, V3; gold letters - 39mm, R8, V3; black letters -
33mm, R8, V3; gold letters - 33mm, R8, V3. V-S

KING, PROFESSOR — MT196

LOCATION: U.S.A. DATE: 1875.
OBV: PROFESSOR/ KING/ IS THE BEST/ VENTRILOQUIST/
LIVING.
REV: KING/ THE/ GREAT/ PRESTIDIGITATEUR/ AND MOD-
ERN/SAMPSON. (sic)
COMPOSITION: C, R5, V6; BR, R6, V7. 19.25-S

KORT, MILTON — MT203

LOCATION: Detroit, Michigan. DATE: 1961.
OBV: MILTON KORT/ MAGICIAN.
REV: KEEP ME AND NEVER GO BROKE.
COMPOSITION: AL, R4, V4. (Encased cent) 32.5-S

KLINGL, R. — MT197

LOCATION: Vienna, Austria. DATE: Unknown.
OBV: Around is "ERSTE WIENER ZAUBER APPARATEN NIED-
ERLAGE" inside "VON/ R. KLINGL/ WIEN 4/ MAYSEDER-
GASSE 2/ ESCAMOTAGE MUNZE".
REV: Same, reversed & incused.
COMPOSITION: NS, R8, V7. 28.5-S

KUETHE, F. WM. JR. — MT204

LOCATION: Glen Burnie, Maryland. DATE: 1976.
OBV: "MAGIC COLLECTOR/ star/ F. WM. KUETHE, JR./
GLEN BURNIE, MD./ EDITOR:/ THE MAGIC CAULDRON.
REV: Indian head left, around is "UNITED STATES BICEN-
TENNIAL/ 1776-1976".
COMPOSITION: C, R1, V1; NpIC, R7, V3. 20.5-S

KLINGL, R. — MT198

LOCATION: Vienna, Austria. DATE: Unknown.
OBV: "ERSTE/ WIENER ZAUBER/ APPARATEN HANDLING/
VON R. KLINGL/ ZAUBERKLINGL WEIN/ 1 MAYSEDER-
GASSE/ 2".
REV: Same, reversed and incused.
COMPOSITION: NS, R8, V7. 31-S

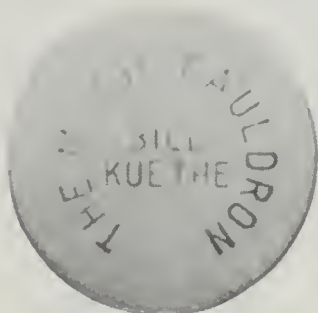
KLINGL, S. — MT199

LOCATION: Vienna, Austria. DATE: 1876.
OBV: Wreath, inside is "S. KLINGL/ WIEN/ FURICHGASSE 4/
GEGRUNDET/ 1876".
REV: Same, reversed & incused.
COMPOSITION: NS, R6, V5. 32-S



KUETHE, F. WILLIAM, JR. — MT205

LOCATION: Glen Burnie, Maryland. DATE: 1970.
OBV: MAGIC/ COLLECTOR/ F. WILLIAM KUETHE, JR./ 700
GLENVIEW AVE. S.W./ GLEN BURNIE, MD./ THE MAGIC/
CAULDRON/
REV: Hand holding 5 playing cards.
COMPOSITION: Green cardboard - 46mm, R7, V1; White card-
board - 37mm, R7, V1; Orange cardboard - 37mm, R7, V1;
Red pressed fiberboard - 39mm, R8, V1; White pressed
fiberboard - 39mm, R8, V1. V-S



KUETHE, F. WILLIAM JR. — MT206

LOCATION: Glen Burnie, Maryland. DATE: 1967.
OBV: "THE MAGIC CAULDRON/ BILL/ KUETHE".
REV: Blank, numbered.
COMPOSITION: AL, R7, V3; BR, R5, V2; counterstamped on
English 1d, R7, V2; counterstamped on English 1/2d, R4,
V2. 32-S

LANGE SKI BOOT CO. — MT207

LOCATION: Colorado. DATE: 1974.
OBV: "NEW MAGIC FROM/ L/ LANGE".
REV: See varieties, black lettering.
COMPOSITION: WP, "BANSHEE", R2, V3; WP, "PHANTOM",
R2, V3; WP, "DEMON", R2, V3; WP, "WIZARD", R2, V3.
U-U

LARETTE — MT208

LOCATION: Amsterdam, Holland. DATE: Unknown.
OBV: Bust left, "EEN LARETTE - Arond EEN ONOVERTROF-
FEN AMUSEMENT".
REV: "STUDIO/ LARETTE/ TEL. 51241/ HORTUS PLANTS-
DEN 7/ AMSTERDAM - C/ AMUSEMENTS BUREAU/ INSTI-
TUT/ VOOR/ GOOCHELKUNST"/ (around is:) "VERKOOP
VAN GOOCHEL APPARATEN/ PHYSCOURANT GRATIS".
COMPOSITION: AL, R7, V7. 33.5-S



LARETTE — MT209

LOCATION: Amsterdam, Holland. DATE: Unknown.
OBV: Bust left, around is "DE MEESTERLUKE/ GOOCHEL-
KUNSTENAAR/ LARETTE".
REV: Around edge is "INSTITUUT VOOR GOOCHELKUNST/
GOOCHELAPPARATEN". Inside is: "STUDIO/ LARETTE/
TEL. 96272/ WILLEMS PARKWEG 128/ AMSTERDAM/
NEDERLAND SCHE/ VERKOOPCENT RALE."
COMPOSITION: NS, (very thin, appears to be etched on) R7, V7.
30-S

LESSIVE MAGIQUE — MT210

LOCATION: Unknown. DATE: Unknown.
OBV: "LESSIVE/ MAGIQUE" counterstamped on English 1d.
REV: Coin design.
COMPOSITION: C, R8, V4.

LEVANTE, LES — MT211

LOCATION: Australia. DATE: Unknown
OBV: "TAKE ME TO SEE/ THE/ GREAT LEVANTE/ IN/ "HOWS/
TRICKS"/".
REV: Gummed.
COMPOSITION: Paper adhesive sticker, R3, V2. Round

LEWERRI, E. — MT212

LOCATION: Germany. DATE: Unknown.
OBV: "E. LEWERRI" around is "ZUR ERINNERUNG/ HAND-
MANIPULATOR".
REV: "WENN'S/ GELD WAR ECHT,/ DIR WAR'S SCHON/
RECHT".
COMPOSITION: Silver paper on wood core, R5, V4. 33.5-S



LIEBENOW, ERHARD — MT213

LOCATION: Unknown. DATE: 1972.
OBV: ERHARD LIEBENOW/ MAGIER.
REV: Silhouette in gold on black background.
COMPOSITION: WP, R4, V3. 31.5-S

LINDHORST, WILL — MT214

LOCATION: St. Louis, Missouri. DATE: 1929.
OBV: Indian head, LINDHORST/ LUCKY COIN/ TOUCHED BY
ABDUL THE HINDU/ CARRY ME AND NO HARM WILL
COME TO YOU.
REV: LINDHORST MAGIC COIN/ PALM ME/ AND I'LL VANISH/
MAGICIAN/ SUPPLIES/ 3628 OLIVE ST./ ST. LOUIS, MO.
COMPOSITION: NplBr, R7, V7. 30.5-R

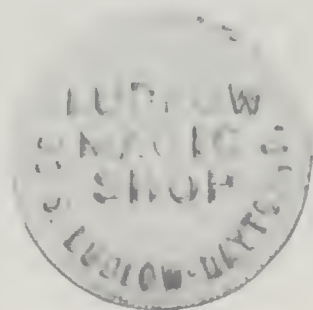


LINDHORST, WILL — MT215

LOCATION: St. Louis, Missouri. DATE: 1929.
OBV: Same as MT214.
REV: Same as MT214 except address is/ 2628 OLIVE ST./
ST. LOUIS, MO.
COMPOSITION: GS, R7, V7. 33-R

LISCHKE, E.O. — MT216

LOCATION: Germany. DATE: Unknown.
OBV: Man's head, bust right.
REV: "E.O. LISCHKE".
COMPOSITION: GT, R8, V7. 21-S



LUDLOW MAGIC SHOP — MT217

LOCATION: Dayton, Ohio. DATE: Unknown.
OBV: LUDLOW/ MAGIC/ SHOP/ 33 S. LUDLOW • DAYTON, O.
REV: MASTER GOOD LUCK TALISMAN/ MIZPAH/ SUCCESS/
(Hindu head figures).
COMPOSITION: BR, R7, V6. (Same rev. die as MT145 - Golden Gate Magic.) 30.5-S



LYONS, LOUIS E. — MT217a.

(See Philadelphia Magic Shop)

MAC, TOMMY — MT218

LOCATION: Scotland. DATE: 1955.
OBV: Stamped TOMMY MAC MAGICIAN around edge, at center is a star.
REV: Blank.
COMPOSITION: NS, R7, V6. 36-S

MAGIC CIRCLE — MT225

LOCATION: London, England. DATE: Unknown.
OBV: Magic Circle/ Vistor's Badge/ ANDERSON'S HOTEL, Fleet Street, E.C.
REV: 12 zodiac signs in circle.
COMPOSITION: Cardboard, R7, V4. 32.5-S

MAC DOUGALL, MICHAEL — MT219

LOCATION: New York. DATE: None.
M. MacDougall states: "I had my own token — had 2,000 made. It had my picture on one side and four queens (playing cards) on the other. My act was called 'Jack King and the Four Queens'. I only have one left now — in my own collection."
COMPOSITION: Unknown, R9, V7. U-U

MAC MILLAN, RON — MT220

LOCATION: England. DATE: 1960.
OBV: Small rabbit head stamped in center.
REV: Same.
COMPOSITION: AL, R5, V4. 45-S



MAGI GENII — MT221

LOCATION: Cincinnati, Ohio. DATE: 1863.
OBV: MAGI GENII/ QUBO/ DAIRI/ WHANG
REV: CONSULERE/ GENERI/ HOMINUM/ HO HI/ WHANG/ B.C./ 129374.
COMPOSITION: C, R6, V7. 19.35-R

MAGIC COIN — MT226

LOCATION: Germany. DATE: 1972.
OBV: Rabbit facing left, above is MAGIC COIN, on right is MADE IN/ GERMANY.
REV: Shell with cap firing mechanism inside.
COMPOSITION: ST, R4, V3. 35-S



MAGIC COIN — MT227

LOCATION: Japan. DATE: Unknown.
OBV: MAGIC COIN — woman facing right, wreath below.
REV: Same.
COMPOSITION: NS, R5, V4. 33-G

MAGI GENII — MT222

LOCATION: Cincinnati, Ohio. DATE: 1863.
OBV: MAGI GENII/ QUBO/ DAIRI/ WHANG.
REV: Indian head left, 13 stars, "1863".
COMPOSITION: CN, R7, V9. (Civil War Token) 19.25-R

MAGIC COLLECTORS ASSOCIATION — MT228

LOCATION: Chicago, Ill. DATE: 1975.
OBV: MAGIC COLLECTORS ASSOCIATION/ 25TH/ ANNI-VERSARY/ MAGICOL/ 1950/ 1975/ T.M.C.
REV: Bust/ THE FATHER OF MODERN CONJURING/ ROBERT — HOUDIN.
COMPOSITION: S, R7, V7; BZ, R4, V3; NS, R4, V3. 34-S



MAGI GENII — MT223

LOCATION: Cincinnati, Ohio. DATE: 1863.
OBV: MAGI GENII/ QUBO/ DAIRI/ WHANG.
REV: N. MENDAL SHAFER/ ATTORNEY/ &/ COUNSELOR/ AT/ LAW/ 57 THIRD ST./ CINCINNATI.
COMPOSITION: Cn, R8, V50. (Civil War Token) 19.25-R

MAGIC HOUSE — MT229

LOCATION: Springfield, Illinois. DATE: Unknown.
OBV: MAGIC/ HOUSE/ SPRINGFIELD.
REV: "5".
COMPOSITION: BR, R5, V3; C, R5, V3. 21-S



MAGIC CAULDRON, THE — MT224

LOCATION: Glen Burnie, Maryland. DATE: 1973.
OBV: THE/ MAGIC/ CAULDRON/ (picture of wizard & cauldron)/ BILL/ KUETHE.
REV: Coin design. (Elongated coin)
COMPOSITION: U.S. 1¢ - 1972, R4, V1; U.S. 10¢ - 1967, R7, V3; U.S. 25¢ - 1965, R8, V4.

MAGICKA LOGE PONREPO — MT230

LOCATION: Prague, Czechoslovakia. DATE: 1930.
OBV: Skull with top hat, initials "MLP" on top hat and around skull.
REV: Same, incused & reversed.
COMPOSITION: ST, R4, V5. 32.5-S



MAGICKA LOGE PONREPO — MT231

LOCATION: Prague, Czechoslovakia. DATE: 1930.
 OBV: MAGICKA/LOGE/PONREPO/PRAHA.
 REV: Skull with top hat, initials "MLP" on top hat and around skull.
 COMPOSITION: WM, 33mm, reeded edge, R4, V5; WM, 33mm, smooth edge, R4, V5; WM, 30.5mm, smooth edge, R4, V5.



MAJA — MT235

LOCATION: Unknown. DATE: 1958.
 OBV: Center: female figure DIOSA DE LA MAGIA. MAJA. GODDESS OF MAGIC. MAJA.
 REV: CENTER: "13/1958" around: twelve signs of the zodiac.
 COMPOSITION: LD/pIGD, R8, V6. 31-S
 (For "Maja" pieces, also see Felsman, A.P. and Roterberg, A.)



MAGICKY KLUB PRAHA — MT232

LOCATION: Prague, Czechoslovakia. DATE: 1935.
 OBV: Top hat, wand and Ace of Spades, MAGICKY KLUB PRAHA.
 REV: MAGICKY KLUB/PRAHA/ star.
 COMPOSITION: AL, 34.5mm, R4, V5; WM, 35mm, R4, V5. S

MAGICKY KLUB V PRAZE — MT233

LOCATION: Prague, Czechoslovakia. DATE: 1932.
 OBV: Ace of Spades with "M.K.P." on it, around MAGICKY KLUB V PRAZE.
 REV: Large question mark, "M.K.P./ 1922 (star) 1932."
 COMPOSITION: WM, reeded edge, 33mm, R4, V5; WM, smooth edge, 33mm, R4, V5; WM, reeded edge, 32mm, R4, V5; NS, smooth edge, 32mm, R4, V5; C, smooth edge, 33mm, R4, V5.

MANDRAKE — MT236

LOCATION: U.S.A. DATE: 1941.
 OBV: Head & shoulders of caped magician MANDRAKE'S/ KFS/MAGIC COIN.
 REV: Hollow shell.
 COMPOSITION: C, R8, V5. 20-S
 (A trick coin that comes with an insert — a U.S. 1¢ piece with the tail side ground smooth.)



MARTINKA — MT237

LOCATION: New York. DATE: Unknown.
 OBV: MARTINKA & Co./ MANUFACTURERS/ OF/ FINE MAGICAL/ APPARATUS/ NEW YORK/ wreath.
 REV: Magician astride world, MUNDUS VULT DECIPI: DECIPIATUR.
 COMPOSITION: GS, R8, V8; BR, R8, V8. 30.5-R

MARTINKA — MT238

LOCATION: New York. DATE: Unknown.
 OBV: Magician astride world, MUNDUS VULT DECIPI : DECIPIATUR.
 REV: Same.
 COMPOSITION: NS, R3, V4; BR/GDpl, R4, V5; BR/Spl, R4, V5; BR/Npl, R4, V5; BR, R4, V5; C, R4, V5; AL, R4, V5; N, R4, V5; NS/GDpl, R4, V5; BZ, R4, V5; BZ/Npl, R4, V5; C/GDpl, R4, V5. 30.5-R



MAGIE — MT234

LOCATION: Germany. DATE: Unknown.
 OBV: "5", around is MAGIE/REICHSMARK.
 REV: Same.
 COMPOSITION: NS, R5, V4. 33.5-S

MARTINKA — MT239

LOCATION: New York. DATE: Unknown.
 OBV: Magician astride world, MUNDUS VULT DECIPI — DECIPIATUR.
 REV: Same.
 COMPOSITION: NS, R4, V6; N, R4, V6. 30.5-R

MARTINKA — MT240

LOCATION: New York. DATE: Unknown.
 OBV: Magician astride world, MUNDUS VULT DECIPI : DECIPIATUR.
 REV: Same.
 COMPOSITION: C, R5, V7; C/GT, R5, V7. 12.75-R



MARTINKA — MT241

LOCATION: New York. DATE: 1899 (?).
OBV: Bust of George Washington right, GEORGE WASHINGTON/ BORN 22 FEBY 1732 DIED 14 DEC 1799.
REV: Same.
COMPOSITION: NS, R5, V7. (Kenny-178) 38.5-R

This token has long been called a magician's token, and John Mulholland, writing in The Journal of Necromantic Numismatics, Vol. 3 #2, April, 1968, explained why:

"Pauline Martinka told me that only on rare occasions would customers ask for dollar-size coins. The demand was not sufficient to warrant the cost of having dies made to produce coins of larger size. However, when Francis J. Martinka learned that he could purchase very cheaply a considerable quantity of dollar size coins, he bought all that were available and put them in stock. I do not now recall whether Mrs. Martinka said the manufacturer had gone into bankruptcy, or if it were the firm which had ordered the coins which was bankrupt, but bankruptcy came into the picture, and Mr. Martinka was able to make the purchase for only the cost of the metal. And, further, it is my recollection that Martinka bought all the coins ever struck with that design. I believe it unlikely that I was told of the quantity purchased, but if I were I have forgotten."



MARZINNI (Les Downham) — MT242

LOCATION: England. DATE: 1964.
OBV: Wreath only, no lettering.
REV: Same.
COMPOSITION: BR, R2, V2. 23.5-S

MASKELYNE, JASPER — MT243

LOCATION: London, England. DATE: 1932.
OBV: JASPER MASKELYNE/ THE ACE OF/ MAGIC.
REV: Imitation English 1d with King George V head.
COMPOSITION: Cardboard, R6, V4. U-S



MASTER MAGIC — MT244

LOCATION: Japan. DATE: Unknown.
OBV: Devil's Head, above is "JAPAN" around M/ MASTER MAGIC.
REV: Same.
COMPOSITION: GS, R4, V4. 31-R



MATHEWS, ORBRA — MT245

LOCATION: Sebring, Florida. DATE: 1970.
OBV: ORBRA J. MATHEWS/ MAGICIAN/ POB 493/ SEBRING, FLORIDA 33870.
REV: GOOD/ LUCK, center four leaf clover, 6 stars.
COMPOSITION: BR, R3, V2. 32-S



MATTEL — MT246

LOCATION: New York. DATE: 1972.
OBV: Sunburst design with 8 rays, 8 circles between rays.
REV: Same.
COMPOSITION: OP, R1, V1. 31-S
(Issued for Magic Show Stoppers Set.)

MAYER, DR. NICHOLAS — MT247

LOCATION: Germany. DATE: Unknown.
OBV: DR. MAYER ARNSTADT/ 22. MAG. KONGRESS 34.
REV: Blank, colored green (small hole slightly off center).
COMPOSITION: Pink & yellow cardboard, R7, V4. 39-S



MAYETTE — MT248

LOCATION: France. DATE: Unknown.
OBV: Large owl on stick with star on each side.
REV: Bust of woman facing left, around is REPUBLIQUE FRANCAISE.
COMPOSITION: AL, R4, V4; BZ, R4, V4. 38-S



MEYER, HERBERT — MT249

LOCATION: Hamburg, Germany. DATE: 1912
OBV: HERBERT/ MEYER/ MITGLIED/ DES/ MAG. ZIRKELS/
HAMBURG/1912.
REV: KAUF/ MANTEL/ KLEIDER/ NUR BEI/ MANTEL —/
MEYER.
COMPOSITION: AL, R6, V6. 33.5-S



MILLS — MT250

LOCATION: Stockholm, Sweden. DATE: 1945.
OBV: Caricature of man facing left.
REV: MYNT KUNGEN/ MILLS/ BOX 267 — Stockholm.
COMPOSITION: AL, R4, V4. 33.5-S



MR. MAGIC (Harry Collins) — MT251

LOCATION: U.S.A. DATE: 1970.
OBV: Rabbit in top hat MR. MAGIC/ GOOD LUCK COIN.
REV: FL/ FRITO-LAY.
COMPOSITION: BR, R1, V2. 32-R



MODERN MAGIC PRODUCTS (Jack Davis, Prop.) — MT252

LOCATION: U.S.A. DATE: 1935.
OBV: Turbanned Hindu in center, around: MODERN MAGIC/
PRODUCTS.
REV: Same.
COMPOSITION: WM, R4, V5. 33.5-R

MORRISON, JACK — MT253

LOCATION: England. DATE: Unknown.
OBV: JACK/ MORRISON.
REV: Blank.
COMPOSITION: NS, R6, V4. 34-R

MULHOLLAND, JOHN — MT254

LOCATION: New York. DATE: 1925.
OBV: Rabbit in top hat, name JOHN MULHOLLAND in back-
ground.
REV: Blank.
COMPOSITION: GD, R10, V250; S, R8, V100; AL, R7, V9. 30.5-S



MULHOLLAND, JOHN — MT255

LOCATION: New York. DATE: 1935.
OBV: Bust left, JOHN • MULHOLLAND • MAGICIAN.
REV: Rabbit in hat, hand holding fan of cards, MAGIC • IS •
THE • ART • OF • CREATING • ILLUSION • AGREEABLY.
COPYRIGHT BY HENRY HERING at bottom of reverse.
MEDALLIC ART CO. N.Y. stamped into edge.
COMPOSITION: GD, R10, V250; S, R8, V100; BZ, R6, V9. 30.7-S



MULHOLLAND, JOHN — MT256

LOCATION: New York. DATE: 1932.
OBV: 4 Chinese characters.
REV: 4 Chinese character, square hole thru center 6mm.
COMPOSITION: C, R8, V100. 30-S
(Imitation of Chinese Cash.)

John Mulholland wrote about his own tokens in The Journal of Necromantic Numismatics, Vol. 3 No. 4, dated Oct., 1968. In it he said the following about his Chinese token: "Only forty of these Chinese coins were made. They were cast in copper by a jeweler in the Harris Bazaar, in Budapest, Hungary."

MULHOLLAND MEMORIAL — MT257

LOCATION: U.S.A. DATE: 1970.
OBV: Rabbit in top hat , name JOHN MULHOLLAND in back-ground.
REV: CONJUROR & PEDAGOGUE/ BORN/ JUNE 9, 1898/ DIED/ FEB. 25, 1970/ EDITOR:/ THE SPHINX/ AUTHOR.
COMPOSITION: AS, R7, V7; S, R7, V7; ABZ, R6, V3; BZ, R4, V2. 30.5-S

This medal was struck as a memorial to John Mulholland, using the original die for the obverse that was used to strike #MT-254.

MYSTO CO., THE (John Petrie) — MT258

LOCATION: Connecticut. DATE: Unknown.
OBV: THE MYSTO CO./ WESTVILLE,/ CONN.
REV: Plain.
COMPOSITION: AL, R8, V9; NS, R8, V9. 28.5-S



MYSTO MAGIC — MT259

LOCATION: U.S.A. DATE: Unknown.
OBV: Dancing devil on world, "MYSTO" on world, "MAGIC" from wand in devil's hand.
REV: Same.
COMPOSITION: GS, 31mm, R2, V2; ST, 31mm, R2, V2; ST, 34.5mm, R2, V3; CP, 31mm, R5, V4; Shell, R2, V2. R

MYSTO MAGIC — MT260

LOCATION: Unknown. DATE: Unknown.
OBV: Same as MT-259.
REV: Same.
COMPOSITION: Two hollow steel shells joined together, R2, V2; AL, R4, V3. 30-S

MYSTO — MT261

LOCATION: Unknown. DATE: Unknown.
OBV: Dancing devil on world, "MYSTO" falling from wand.
REV: Same.
COMPOSITION: (Cast) LD, 24mm, R5, V4; LD, 31.5mm, R5, V4. S

NAHOMI, PROF. — MT262

LOCATION: U.S.A. DATE: 1928.
OBV: Egyptian figure in center, below is PROF. NAHOMI.
REV: Various symbols, HINDOO/ LUCKY PIECE.
COMPOSITION: AL, R8, V7. 23.5-S



NIC — MT263

LOCATION: Copenhagen, Denmark. DATE: 1952.
OBV: Large star with "NIC" inside, around, NORDEURO-PAEISK/ KOBENH/ TRYLLEAPPARAT - FABRIK.
REV: Devil full figure facing left.
COMPOSITION: WM, R4, V4. 33.5-S

OKITO — MT264

LOCATION: U.S.A. DATE: 1935.
OBV: Paper seal, oriental bust left, below "OKITO".
REV: Blank.
COMPOSITION: Purple paper, R6, V3; Scarlet paper, R6, V3. 33-S



OLSON, ROBERT — MT265

LOCATION: U.S.A. DATE: Unknown.
OBV: ROBERT/ MAGICIAN/ OLSON, printed in red.
REV: Same, printed in black.
COMPOSITION: Green paper, R6, V2. 45.5-S



OTAKE — MT266

LOCATION: Japan. DATE: Unknown.
OBV: Goddess of Magic in center, around is: OTAKE A.M.M. CO. MAGIC COIN.
REV: Same.
COMPOSITION: NS, 38mm, R3, V2; NS, 32mm, R3, V2; Bp, 32mm, R3, V2. V-R



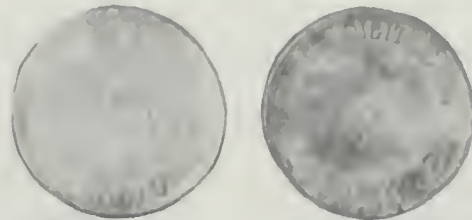
OWEN MAGIC (Les Smith) — MT267

LOCATION: U.S.A. DATE: 1975.
OBV: Genii coming from lamp/ OWEN MAGIC/ SUREME.
REV: Dove on wand, symbols, 1975.
COMPOSITION: GS, 31mm, R2, V1; GS, 39mm, R3, V2; S, 39mm, R7, V9. V-R



PACIFIC COAST ASSOCIATION OF MAGICIANS — MT268

LOCATION: San Jose, California. DATE: 1969.
 OBV: Magic lamp, 3 of clubs/ SAN JOSE 69 MYSTIC 13/ PRE-
 SENTED TO THE WORLD'S GREATEST MAGICIAN.
 REV: Rabbits in hats, wand, PCAM SAN JOSE/ NO MATTER
 HOW YOU LOOK AT IT, SAN JOSE IS FINE FOR '69.
 COMPOSITION: AL, R6, V6. 38.5-R



PARTAGAS, JOAQUIM — MT270

LOCATION: Barcelona, Spain. DATE: 1910.
 OBV: EL REY/ DE LA/ MAGIA/ BARCELONA.
 REV: PRESTIDIGITACION/ Y/ ESCAMATEO. (An earlier strike
 of MT-122.)
 COMPOSITION: NS, R8, V8. 39-S

PAUL, JOHNNY — MT271

LOCATION: Cicero, Illinois. DATE: 1935.
 OBV: JOHNNY PAUL'S/ MAGIC/ LOUNGE/ 4820 W./ CER-
 MAK/ ROAD/ CICERO, ILLINOIS.
 REV: GOOD FOR/ 5¢ IN DRINKS ONLY.
 COMPOSITION: BR, R8, V6. 29-S
 (See listing in Catamount)(B20R)



PAUL, JOHNNY — MT272

LOCATION: Cicero, Illinois. DATE: 1935.
 OBV: JOHNNY PAUL'S/ MAGIC/ LOUNGE/ 4820 WEST/
 CERMAK/ ROAD/ CICERO, ILLINOIS.
 REV: GOOD FOR/ 25¢ IN DRINKS.
 COMPOSITION: BR, R8, V6. 26-S

PETRIE - LEWIS — MT273

LOCATION: U.S.A. DATE: Unknown.
 OBV: PETRIE LEWIS COIN FOR HADES.
 REV: Blank.
 COMPOSITION: Cardboard, R8, V4. U-S



PHILADELPHIA MAGIC SHOP (Louis E. Lyons, Prop.) — MT274

LOCATION: Philadelphia, Pennsylvania. DATE: 1925.
 OBV: Devil's head, MAGIC SHOP/ PHILADELPHIA, PA.
 REV: Same.
 COMPOSITION: GS, smooth edge, R4, V5; GS, reeded edge,
 R3, V4. (Coin struck) 31-V
 (For medal struck, see MT-179.)

PACIFIC COAST ASSOCIATION OF MAGICIANS — MT269

LOCATION: U.S.A. DATE: 1969.
 OBV: Liberty head left, 1969.
 REV: Eagle center, UNITED STATES OF AMERICA/ MAGIC
 P.C.A.M. SOUVENIR.
 COMPOSITION: LDplS, R7, V6. 89-S

This coin was originally struck for Louis Lyons in the 1920's by the firm of S.H. Quint's Sons in Philadelphia. Some 25 years later, Mike Kanter, who owned Kanter's Magic Shop in Philadelphia, approached that firm with the idea of striking his own token. The cost of making new dies was prohibitive, so they agreed to strike a number of tokens using the original (Lyons) dies. The original striking was coin struck, and the second striking for Kanter was medal struck.

POWELL, FREDERICK EUGENE — MT275

LOCATION: U.S.A. DATE: 1935.
OBV: Martinka MT-229 that has been gold plated.
REV: Same.
COMPOSITION: GS/Gpl, R8, V6. 30.5-R

PRICE, DAVID

See Egyptian Hall Museum.



PUFF, HAROLD F. — MT276

LOCATION: Oxford, Ohio. DATE: Unknown.
OBV: GOOD/ LUCK, around is PUFF THE MAGIC/ (star) DRAGON (star).
REV: PIFF/ PAFF/ POOF around is HAROLD F. PUFF/ (star) OXFORD, OHIO 45056 (star).
COMPOSITION: AL, R4, V3. 32.5-S



RAMSAY, JOHN — MT277

LOCATION: Scotland. DATE: 1937.
OBV: Head of King & Queen; around is CORONATION/ 1937.
REV: JOHN RAMSAY/ CONJURING/ ENTERTAINER/ AYR.
COMPOSITION: GT covered cardboard, R8, V7. 33.5



RAXON — MT278

LOCATION: Germany. DATE: Unknown.
OBV: INTERNATIONALER/ RAXON/ TAUSCHUNGSKUNSTLER.
REV: Picture of world globe.
COMPOSITION: BZ, R4, V4. 37-R

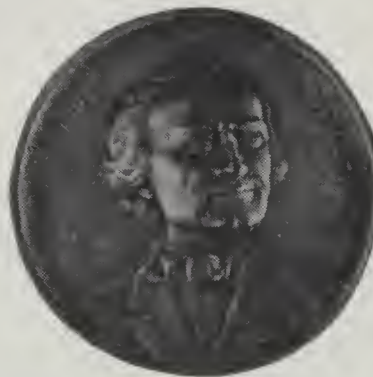


REISS GAMES, INC. ("Magic Act") — MT279

LOCATION: New York. DATE: 1975.
OBV: Eagle on shield with arrows & olive branch.
REV: Same.
COMPOSITION: WP, R1, V1, 31-S

ROBERT - HOUDIN — MT280

LOCATION: France. DATE: 1967.
OBV: Bust left with both hands, between is name ROBERT - HOUDIN.
REV: Fish, doves, magic table with vase and hand, at edge is QUEROLLE.
COMPOSITION: BZ, cast, R4, V70. 115-S



ROBERT - HOUDIN — MT281

LOCATION: France. DATE: 1935.
OBV: Bust right of Robert - Houdin, to left is ROBERT - HOUDIN, on right is "1805-1871".
REV: Blank.
COMPOSITION: C, R7, V100. Designed by Dr. J. Dhotel. 50-S

ROBERT-HOUDIN

Also see: MT169, MT357.

ROSS, RICHARD — MT282

LOCATION: Amsterdam. DATE: 1970.
OBV: RICHARD ROSS/ (rabbit in hat)/ REAL MAGIC/ AMSTERDAM.
REV: Large circle, blank.
COMPOSITION: BZ, R4, V6. 40-R

ROTERBERG, AUGUST — MT283

LOCATION: Chicago, Illinois. DATE: 1920.
OBV: Goddess of Magic in center, around is MAJA. GODDESS OF MAJIC (sic) MAJA/ A.R.
REV: Same.
COMPOSITION: NS, R8, V6. 31-R

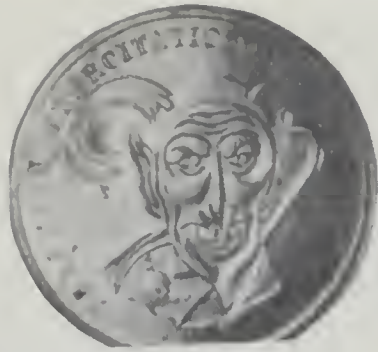
ROTERBERG, AUGUST — MT284

LOCATION: Chicago, Illinois. DATE: 1923.
OBV: Same as MT283.
REV: Same as MT285.
COMPOSITION: NS, R8, V6. 31-R



ROTERBERG, AUGUST — MT285

LOCATION: Chicago, Illinois. DATE: 1925.
OBV: Goddess of Magic in center, MAJA GODDESS OF MAGIC MAJA/ A.R..
REV: Same.
COMPOSITION: GS, R2, V3; LD, R8, V4; SH, R2, V3. (Many varieties exist; different dies; coin struck, and rotated reverses). 30.5-R



ROTERBERG, AUGUST — MT286

LOCATION: Chicago, Illinois. DATE: 1925.
OBV: Devil's head, PRAEMIUM EXERCITATIONIS SCIENTIA
EST/ A.R..
REV: Same.
COMPOSITION: GS, R4, V5; S, R9, V9. (Many varieties exist,
smooth edge, four different readings, medal struck and coin
struck.) 38-R

ROUCLERE, HARRY (Harry Terhune) — MT287

LOCATION: U.S.A. DATE: Unknown.
OBV: GOOD FOR/ 5¢ /—/ ROUCLERE/ —/ IN TRADE.
REV: Ornate "5".
COMPOSITION: AL, R8, V6. 25-S

ROYAL HOUSE OF MAGIC (Steven Piacitelli) — MT288

LOCATION: Providence, Rhode Island. DATE: 1963.
OBV: Imitation of English half crown.
Rev: Imitation of English half crown reverse.
COMPOSITION: Gold colored, PM, R2, V1; Silver colored, PM,
R2, V1; Gold colored, PM, no lettering, R2, V1; Silver color-
ed, PM, no lettering, R2, V1. 32-R

ROYAL HOUSE OF MAGIC — MT289

LOCATION: Providence, Rhode Island. DATE: 1963.
OBV: Imitation of Panama Half Balboa.
REV: Imitation of Panama Half Balboa reverse.
COMPOSITION: Gold colored, PM, R2, V1; Silver colored, PM,
R2, V1. 35-S-R

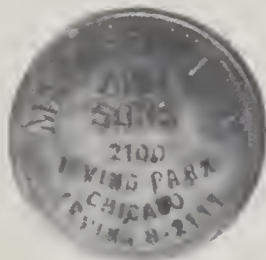


ROYAL MAGIC (Morris Fox) — MT290

LOCATION: New York. DATE: 1957.
OBV: Rabbit with crown & wand, ROYAL MAGIC —/ FOR FUN
AND MYSTERY.
REV: Horseshoe, 4-leaf clover "GOOD/ LUCK."
COMPOSITION: AL, R4, V3. 32.5-S

SALVATORE SALLA, STUDIO #28 — MT291

LOCATION: Chicago, Illinois. DATE: Unknown.
OBV: SPINNER coin.
REV: Unknown.
COMPOSITION: BR, R8, V6. 32-U



SCHULIEN, MATT — MT292

LOCATION: U.S.A. DATE: Unknown.
OBV: MATT SCHULIEN/ AND/ SONS/ 2100/ IRVING PARK/
CHICAGO/ IRVING 8-2111.
REV: \$1.00/ IN TRADE.
COMPOSITION. BR, R6, V6. 35-S

SCHULIEN'S — MT293

LOCATION: U.S.A. DATE: Unknown.
OBV: Figure holding fish bowl, saying HAVE A GOLDFISH,
around SCHULIEN'S/ 1800 N. HALSTED ST.
REV: GOOD FOR/ \$1.00/ IN TRADE.
COMPOSITION: BR, R7, V7. 39-S

SCOTUS, HIERONYMUS — MT294

LOCATION: Italy. DATE: 1580.
OBV: Bust right, round is EFIG : HIERONIMI/ SCOTTI PLA-
CENT :.
Rev: Entwined serpents enclosed by laurel and palm branches,
above is "VTCVMQVE".
COMPOSITION: Various metals, R10, V150. U-S

SEWELL, ERNEST — MT295

LOCATION: England. DATE: Unknown.
OBV: THE/ ERNEST SEWELL/ CONJURING/ CABINET.
REV: Imitation English 1d with King George V head.
COMPOSITION: Cardboard, R7, V5. U-S



SHERMS (Robert Sherman) — MT296

LOCATION: Bridgeport, Connecticut. DATE: Unknown.
OBV: Devil's head, S/ MASTER MAGIC.
REV: Same.
COMPOSITION: GS, R2, V3; AL, R3, V3; ST, R4, V4; SH, R2,
V2. 31-R



SHERMS — MT297

LOCATION: Bridgeport, Connecticut. DATE: Unknown.
OBV: Man's upper torso, right arm MASTER/ MAGIC/ "S".
REV: Same.
COMPOSITION: GS, R5, V5. 31-S



SHERMS — MT298

LOCATION: Unknown. DATE: Unknown.
 OBV: Man's face in center with I/ GIVE YOU on nose & beard, around is PRUDENS, symbols, "S".
 REV: Man's face in center with I/ GIVE YOU on nose & beard, around is HEALTH * WISDOM * WEALTH S.
 COMPOSITION: GT brass, R6, V7. 32-R
 Note: By pressing on "S" at edge, the center hinges up, revealing a space (for a photo), 18.25mm in diameter. See the advertisement for it in the appendix.



SHUFF, C.R. — MT299

LOCATION: Spokane, Washington. DATE: 1935.
 OBV: C.R. SHUFF/TRIX & HOWE/M. 5052.
 REV: Swastika, GOOD LUCK 4 times.
 COMPOSITION: AL, R8, V7. 32-S



S.K.A.M. — MT300

LOCATION: Czechoslovakia. DATE: Unknown.
 OBV: Sphinx head with pyramids below is "SKAM", to left initials "JH".
 REV: Blank, gummed.
 COMPOSITION: Gold paper seal, R7, V6. 55-S
 (Initials J.H. stand for Josef Havel.)

SMITH, ALBERT — MT301

LOCATION: London, England. DATE: 1860.
 OBV: Bearded bust of man facing right.
 REV: EGYPTIAN/HALL/MUSEUM/ 1860.
 COMPOSITION: C, R7, V6. 23-S



SMITH, W.J. — MT302

LOCATION: Eldora, Iowa. DATE: 1972.
 OBV: MAGICAL/ ENTERTAINER/ W.J./ SMITH/ BOX 27 EL-DORA, IA./ 515/497-5474/ ADVERTISING SPECIALTIES.
 REV: Rabbit in top hat, hat has on it: RABBIT/ IN THE/ THE HAT. (sic).
 COMPOSITION: BLP, R2, V2. 38-S



SOCIETA DEI PRESTIGIATORI — MT303

LOCATION: Italy. DATE: 1873.
 OBV: Bust left of Victor Emmanuel II, around VITTORIO EMANUELE II RE D'ITALIA.
 REV: Center "1873", above SOCIETA DEI PRESTIGIATORI, below is wreath.
 COMPOSITION: Ni-Sil., R8, V9. 37-S

SOO, CHUNG LING — MT304

LOCATION: England. DATE: 1900.
 OBV: Chinese characters.
 REV: Chinese characters.
 COMPOSITION: S, R-8, V100. 28-S



SORCAR — MT305

LOCATION: India. DATE: 1955.
 OBV: Bust of Sorcar facing front, around is MAGICIAN SORCAR.
 REV: Wreath with "RF" at top, FRANCS inside.
 COMPOSITION: LD, R7, V6. 30-S

SOSTER — MT306

LOCATION: Italy. DATE: Unknown.
 OBV: MAGO SOSTER under cylinder with rabbit.
 REV: PORTA FORTUNA, 13 and spider.
 COMPOSITION: Unknown, R7, V6. U-U

SPARKS, H.G. — MT307

LOCATION: England. DATE: Unknown.
OBV: Head of King George V (imitation of 1d)
REV: Advertising copy.
COMPOSITION: Cardboard, R5, V4.

U-S



SPHINX MEDAL — MT308

LOCATION: New York City, New York. DATE: 1935.
OBV: Portrait of the Sphinx suspended by red ribbon from bar with THE SPHINX AWARD.
REV: Blank.
COMPOSITION: S (cast), R8, V9.

30.5-S

For additional information on The Sphinx medal, see Appendix.



SPITARI, L. — MT309

LOCATION: England. DATE: Unknown.
OBV: SPITARI.
REV: Blank.
COMPOSITION: NS, R5, V4.

32-R

STAFF, FRANK — MT310

LOCATION: England. DATE: Unknown.
OBV: MAGICIAN AND ENTERTAINER/ FRANK STAFF/ BRAE BANK/ REIGATE/ CONCERTS ARRANGED.
REV: Imitation of English half-crown.
COMPOSITION: Cardboard, 34mm, R5, V4; 39mm, R8, V5. V-S

STEVEN, PROFESSOR — MT311

LOCATION: U.S.A. DATE: 1885.
OBV: PROFESSOR STEVEN/ MAGICIAN (star)/ (star).
REV: Devil with wings & pitchfork.
COMPOSITION: NS, R10, V9.
Note: At bottom of obv. die is striker mark LH MOISE SF.

24-S



STOUT, GILBERT — MT312

LOCATION: England. DATE: Unknown.
OBV: Female head facing right, around GILBERT STOUT'S MINT SORCERY/ ISIS.
REV: Same.
COMPOSITION: WM, reeded edge, R5, V4; smooth edge, R5, V4.

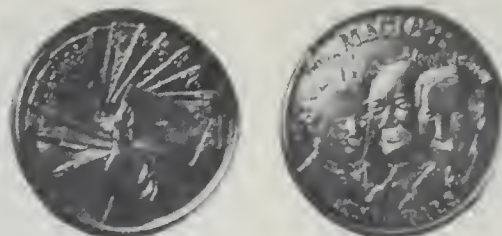
33.5-V



TANGLEY, PEARL — MT313

LOCATION: U.S.A. DATE: 1905.
OBV: Lucky symbols around edge, PEARL/ (wishbone)/ TANGLEY.
REV: Symbols around edge, center has seated Egyptian figure.
COMPOSITION: C, R8, V7.
Struck without collar, irregular size & shape.

S



TANNEN, LOUIS — MT314

LOCATION: U.S.A. DATE: 1950.
OBV: Hand holding fan of cards, pips spell out LOUIS TANNEN.
REV: Busts of Houdini, Kellar & Thurston with names, MAGIC'S IMMORTALS.
COMPOSITION: GS, R2, V2; Brass colored steel, R2, V2; Gold colored, R2, V2; AL, R2, V2; BR, R5, V3.

31.5-R

TARBELL SYSTEM, INC. — MT315

LOCATION: Chicago, Illinois. DATE: 1930.
OBV: Devils head, TARBELL SYSTEM, INCORPORATED/
CHICAGO.
REV: Same.
COMPOSITION: GS, R6, V6; SH, R3, V3. 31-R



THAYER MANUFACTURING CO. — MT320

LOCATION: Los Angeles, California. DATE: 1928.
OBV: Hindu head, THAYER MANUFACTURING CO./ LOS
ANGELES, CAL.
REV: Same.
COMPOSITION: GS, R8, V8. 30-R

TARBELL SYSTEM, INC. — MT316

LOCATION: Chicago, Illinois. DATE: 1935.
OBV: Man's head, bust right, TARBELL SYSTEM, INCORPO-
RATED/ CHICAGO.
REV: Same as MT-317.
COMPOSITION: GS, R4, V4; Rev. same as obv., GS, R5, V5. 31-R

TARBELL — MT317

LOCATION: U.S.A. DATE: 1935.
OBV: Man's head, bust right, TARBELL/ SYSTEM . INCOR-
PORATED/ CHICAGO.
REV: Same.
COMPOSITION: GS, R4, V4; SH, R3, V3. 31-R

THIS — MT321

LOCATION: France. DATE: Ca. 1860.
OBV: THIS/ JEUX DE JARDINS/ ET DE SALONS/ ESCAMOT-
AGE/ PHYSIQUE/ AMUSANTE/ AU COIN DU PASSAGE VEN-
DOME.
REV: Coat of Arms, around THIS FOURNISSEUR Bte DE SA
MAJESTE L IMPERATRICE.
COMPOSITION: C, R8, V8. (16 sided) 21.5-S

THIS & CROZIER — MT322

LOCATION: Paris, France. DATE: Ca. 1862.
OBV: Crest around is THIS, FOURNISSEUR BTE. DE SA
MAJESTIE L'IMPERATRICE.
REV: Around is THIS & CROZIER. AU COIN DU PASSAGE
VENDOME, inside is: FS DE/ JEUX DE JARDINS/ ET DE
SALONS/ ESCAMOTAGE/ PHYSIQUE/ AMUSANTE.
COMPOSITION: BR, R8, V8. (12 sided) 22-S



TENYO MAGIC — MT318

LOCATION: Tokyo, Japan. DATE: 1973.
OBV: Wreath with "T ? T" in circle above.
REV: Picture of Mt. Fuji with wreaths above & below.
COMPOSITION: BRP, R2, V2. 24-S



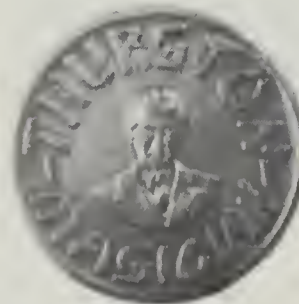
THURSTON, HOWARD — MT323

LOCATION: U.S.A. DATE: 1928.
OBV: Bust left of Thurston, "THURSTON THE MAGICIAN/
1928".
REV: Shield with GOOD/ LUCK/ CHARM, around is NEVER/
FAILS/ 1928.
COMPOSITION: C, R4, V4; BR, R4, V4. 25-S



TENYO MAGIC — MT319

LOCATION: Tokyo, Japan. DATE: 1975.
OBV: Rabbit with large ears, 1975/ HOCUS POCUS/ TENYO
CROWN.
REV: Wreath with shield and crown above.
COMPOSITION: NS, R3, V3. 31-R



THURSTON, HOWARD — MT324

LOCATION: U.S.A. DATE: 1929.
OBV: Bust facing THURSTON/ MAGICIAN.
REV: Scarab with "HT", GOOD LUCK/ 1929.
COMPOSITION: BZ, R4, V4. 25-S



THURSTON, HOWARD — MT325

LOCATION: U.S.A. DATE: 1926.
OBV: THURSTON/ MAGIC. (Square hole 10mm sq. in center.)
REV: WONDER/ COIN.
COMPOSITION: ZN, R6, V5. 28.5-S



THURSTON & KELLAR — MT326

LOCATION: U.S.A. DATE: 1933.
OBV: Busts left, THURSTON-KELLAR/ 1907/ 1932/ 1908/
1933/ 25TH/ ANNIVERSARY.
REV: Blank.
COMPOSITION: Dental Stone, painted green, R7, V8. 47-S



TOKYO AMATEUR MAGICIANS CLUB — MT327

LOCATION: Tokyo, Japan. DATE: 1968.
OBV: TOKYO AMATEUR MAGICIANS CLUB • 1968 • around
rim, inside "TAMC" with lined background, rounded edges.
REV: Same.
COMPOSITION: BZ, R2, V2. 31-R



TRAVELER'S TOYS — MT328

LOCATION: New York. DATE: 1974.
OBV: Magician in top hat showing both hands empty, three
stars on each side of head.
REV: Same, (made in Hong Kong).
COMPOSITION: WP, R1, V1. 31-S

TREWEY — MT329

LOCATION: France. DATE: 1892.
OBV: Shield with eye and hand, TRAVAIL/ PATIENCE/ PRO-
GRESS around is TREWEY/ THE ABSOLUTE MASTER.
REV: HOPKINS/ TRANS-/ OCEANIC COMPANY.
COMPOSITION: C, R7, V7. 22.5-S



TREWEY — MT330

LOCATION: France. DATE: 1885.
OBV: ORIGINAL/ TREWEY/ FANTAISISTE.
REV: Shield with eye and hand, TRAVAIL/ PATIENCE/ PRO-
GRESS around is COSMOPOLITAN/ LABOR • OMNIA •
VINCIT.
COMPOSITION: BZ, R8, V8. 22.5-S

TRIK KLUB PRAHA — MT331

LOCATION: Czechoslovakia DATE: Unknown.
OBV: Signs of playing card suits, around is TRIK KLUB
PRAHA.
REV: Blank.
COMPOSITION: AL, R5, V4. 25-S

USHERS, THE — MT332

LOCATION: Venice, California. DATE: 1936.
OBV: GOOD LUCK/ WEALTH HEALTH HAPPINESS/ inside,
12 zodiac symbols, Saturn, THE/ USHERS/ VENICE, CAL./
COPYRIGHT 1936.
REV: 12 different reverses, one for each sign of the zodiac.
COMPOSITION: C, R4, V3; BZ, R4, V3. 26-S

UTY — MT333

LOCATION: Switzerland. DATE: Unknown.
OBV: Hand with balls or coins between fingers.
REV: U/ UTY/ Y.
COMPOSITION: C, Spl, R8, V7. U-S

VAN BERN, CHRIS — MT334

LOCATION: England. DATE: Unknown.
OBV: (A sticker similar to the Levante sticker.)
REV: Gummed.
COMPOSITION: Paper, R6, V3. U-S

VAN DOMMELEN, TONNY — MT335

LOCATION: Netherlands. DATE: 1975.
OBV: TONNY/ VAN/ DOMMELEN in raised letters.
REV: Blank.
COMPOSITION: RP, R5, V3. 40-R

VANEK, PROFESSOR — MT336

LOCATION: Hungary. DATE: 1846.
OBV: PHYSIQUE - AMUSANTE/ (Devil's head)/
MEDAILLE 1846.
REV: GRAND WIZARD OF THE NORTH wreath inside: PROFES-
SOR/ VANEK.
COMPOSITION: C, R7, V8. 21-S



VERNON, DAI — MT337

LOCATION: Los Angeles, California. DATE: 1976.
OBV: Silhouette left, MAGIC CASTLE PRESTIDIGITATOR/
1976/ (4 card pips).
REV: MAGIC FOR THE LOVE OF IT! / 3 cups & balls/ THE
VERNON TOUCH/ arrow "YOU PAY"/ six rings, signature,
"VOLCN."
COMPOSITION: BZ, R1, V2; NpIBZ, R3, V3. 39-R



VICTORIA PRESTIDIGITADORA — MT338

LOCATION: Unknown. DATE: Unknown.
OBV: VICTORIA/ PRESTIDIGITADORA (curved lettering).
REV: REPRESENTACIONES/ FANTASTICAS.
COMPOSITION: BR, R7, V7. 24.5-S



VOISIN — MT339

LOCATION: Paris, France. DATE: Unknown.
OBV: 83, RUE VIEILLE - DU - TEMPLE, 83/ PARIS, inside
wreath VOISIN/ MECANICIEN/ FAB nt.
REV: Bust left of woman, REPUBLIQUE/ FRANCAISE.
COMPOSITION: C, R8, V8; Npl, R8, V8. 37.5-S

(VOISIN) — MT343

LOCATION: Paris, France. DATE: Unknown.
OBV: Devil's head, around is PHYSIQUE AMUSANTE.
REV: One large star, 5 small stars within wreath.
COMPOSITION: BZ, R6, V6. 22-S

VOISIN — MT340

LOCATION: Paris, France. DATE: 1855.
OBV: VOISIN/ MECANICIEN/ FAB nt in wreath, around is
83 RUE VIEILLE-DU-TEMPLE 83/ PARIS.
REV: Devil's head, around is PHYSIQUEAMUSANTE/ MEDIL-
LE 1855.
COMPOSITION: BZ, R6, V6; BZ, 16-sided, R-8, V7. 21.5-S



WICKES, WHITTINGTON — MT344

LOCATION: England. DATE: Unknown.
OBV: WITH THE/ COMPLIMENTS OF/ WHITTINGTON/
WICKES.
REV: Blank.
COMPOSITION: Green cardboard, R5, V2. 38



VOISIN — MT341

LOCATION: Paris, France. DATE: 1855.
OBV: VOISIN/ MECANICIEN/ FAB nt within wreath, around
is 81 RUE VIEILLE-DU-TEMPLE 81/ PARIS.
REV: Devil's head, around is PHYSIQUE AMUSANTE/
MEDAILLE 1855.
COMPOSITION: BZ, R6, V6. 21-S

(VOISIN) — MT342

LOCATION: Paris, France. DATE: 1855.
OBV: Devil's head, around is PHYSIQUE AMUSANTE/
MEDAILLE 1855.
REV: Blank.
COMPOSITION: BZ, R6, V6. 21.5-S



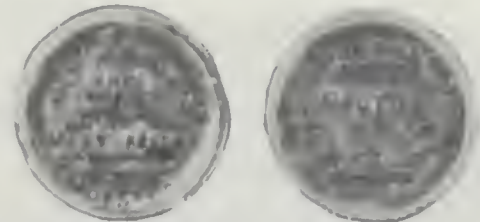
WILD-WALDEN, JAN — MT345

LOCATION: Czechoslovakia. DATE: 1969.
OBV: Wide decorative engraved band, inside WALDEN.
REV: Same.
COMPOSITION: AL, R6, V4. 34-R



WILL, HANS — MT346

LOCATION: Magdeburg, Germany. DATE: 1935.
OBV: W. BETHGE NACHF./ HANS WILL/ MAGDEBURG/
JAKOBSTR. 7 around is MITTELDEUTSCHE CENTRALE F.
MAGISCHE KUNST U. WISSENSCHAFT
REV: Devil waving wand over flowers, coins dropping from
other hand.
COMPOSITION: WM, R5, V5. 34-S



WORTHINGTON, THOMAS C. III — MT351

LOCATION: Baltimore, Maryland. DATE: 1951.
OBV: MAGIC'S 3 IMMORTALS/ ALEX. HERRMANN/ THE
GREAT/ HARRY KELLAR/ HOWARD/ THURSTON
REV: THOS. C. WORTHINGTON 3RD/ SOCIETY OF OSIRIS/
(wand)/ MAGICIANS/ BALTO.,/ MD./ (signs)/ 1951/.
COMPOSITION: Cardboard, R7, V6. 38-S



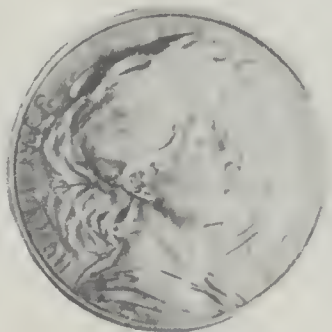
WILLARD, HARRY — MT347

LOCATION: U.S.A. DATE: 1968.
OBV: Bust left, WILLARD/ THE WIZARD.
REV: COMMEMORATING/ HARRY WILLARD/ MAGICIAN/
AND/ ILLUSIONIST/ 1968/ O.J.M.
COMPOSITION: Nicketeen, R2, V2; S, R7, V6. 32-S



WYMAN, JOHN — MT352

LOCATION: U.S.A. DATE: Ca. 1854.
OBV: WYMAN/ WIZARD/ &/ VENTRILOQUIST.
REV: Rev. of coin.
COMPOSITION: U.S. Large 1¢ (cstp), R9, V100; 2 Reales, (cstp),
R9, V100.



WILLMANN, C. — MT348

LOCATION: Germany. DATE: 1925.
OBV: Woman facing right, around is NURNBERGER ZAUBER-
TALER.
REV: Same.
COMPOSITION: NS, R4, V4; AL, R4, V4; WM, R4, V4; ZN, R4,
V4. 33.5-S

Y.M.C.A. MAGIC CLUB — MT353

LOCATION: Osaka, Japan. DATE: 1964.
OBV: Eagle with YMCA symbol on breast, around is: Y.M.C.A.
MAGIC CLUB/ OSAKA JAPAN.
REV: Egyptian facing left, above is MAGIC COIN, below is
"1964", stars around.
COMPOSITION: NS, R5, V5. 37.5-R

WILLMANN, C. — MT349

LOCATION: Germany. DATE: 1925.
OBV: Woman facing right, around is: NURNBERGER ZAU-
BERTALER.
REV: Same, reverse and incuse.
COMPOSITION: NS, R5, V5. 33.5-S

WIZARD OF OZ — MT350

LOCATION: U.S.A. DATE: 1967.
OBV: Head of Wizard of Oz figure, name. (Wizard of Oz, Dor-
othy, Scarecrow, Tin Woodsman, Cowardly Lion, Wicked
Witch).
REV: Figure and a trick (Wizard Trick, Crying Dorothy, Walking
Scarecrow, Tin Man left, Lion Trick, Remove the witch), and
a trick. (6 different)
COMPOSITION: BLP, R2, V2; OP, R2, V2; YP, R2, V2; PP, R2,
V2. 36.5-S



YACHANDEE (Jack Handy) — MT354

LOCATION: Lynchburg, Virginia. DATE: 1935.
OBV: YACHANDEE/ SLEIGHT/ OF/ HANDEE/ THE FRIENDLY
MAGICIAN.
REV: Swastika, good luck symbols, JACK HANDY — LYNCH-
BURG, VA./ LUCK TO YOU.
COMPOSITION: AL, R6, V6. 32-S

These plastic tokens were premiums in packages of Armour Star franks, in their "Win A Wish From The Wizard" promotion, which had the motto "Coin more sales Magic".



YOUNG — MT358

LOCATION: U.S.A. DATE: 1854.
OBV: YOUNG/THE/MAGICIAN.
REV: Rev. of coin.
COMPOSITION: 2 Reales coin. (cstp), R8, V100; U.S. half dollar (cstp), R10, V150.



YOUNG — MT359

LOCATION: U.S.A. DATE: 1860.
OBV: Counterfeit of 1858-O U.S. half dollar.
REV: Counterfeit of U.S. half dollar.
COMPOSITION: LD, R8, V8.

ZANO, A.H. — MT360

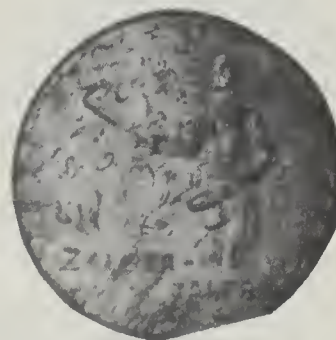
LOCATION: U.S.A. DATE: 1920.
OBV: WORLDS GREATEST/ A.H. ZANO/ SLEIGHT OF HAND ARTIST.
REV: ENTERTAINER AND INSTRUCTOR IN THE ART OF/ NEW/ MAGIC/TRICKS.
COMPOSITION: C, R10, V9. 30.5-S

YOGI MAGIC MART — MT355

LOCATION: Baltimore, Maryland. DATE: 1950.
OBV: Indian Head LUCKY/ PENNY.
REV: SOUVENIR/ PENNY/ PHIL THOMAS/ YOGI/ MAGIC MART.
COMPOSITION: Cpl, R8, V7. 74-S

YOHE, C.B. — MT356

LOCATION: Pillsburgh, Pennsylvania. DATE: 1950.
OBV: GOOD LUCK/ C.B. YOHE/ MAGICIAN/ PITTSBURGH, PA.
REV: Blank.
COMPOSITION: BR, R5, V2; AL, R6, V3. 32-S



ZAUBER — TALER — MT361

LOCATION: Germany. DATE: 1950.
OBV: Magician facing left with wand and top hat, coins and flames to left, below ZAUBER-/ TALER.
REV: Same.
COMPOSITION: WM, R5, V4. 33.5-S

ZAUBERTALER — MT362

LOCATION: Germany. DATE: Unknown.
OBV: Woman's head ZAUBERTALER/ ZAUBERTALER.
REV: Same.
COMPOSITION: WM, R6, V5. 33.5-S

ZDROJEWSKI, MAREK — MT363

LOCATION: Lublin, Poland. DATE: 1974.
OBV: Hand with fan, wand and "MZ" in palm, above fingers are AREMI. EREF at edge.
REV: MAREK/ ZDROJEWSKI/ LUBLIN/ POLSKA.
COMPOSITION: AL, R5, V5; GT, R5, V5. 36.5-R



YOST, THOMAS — MT357

LOCATION: Philadelphia, Pennsylvania. DATE: 1890.
OBV: Bust left, THE FATHER OF MODERN CONJURING/ ROBERT - HOUDIN.
REV: Magician pulling rabbit from hat, below is "Y".
COMPOSITION: GS, R5, V6. 31-R
(Two distinct die varieties exist.)

CROSS-REFERENCE LISTING

Findlay — Conjurers Coins Medals; Kuethe — Magicians' Tokens, and Culver — Black Magic.

Abbreviations for omitted items: (- ? -) Unattributed &/or questionable items; (NC) Not conjuring; (WN) Wooden Nickel; (M) Medal — unique item.

Findlay	Kuethe	Culver	Findlay	Kuethe	Culver	Findlay	Kuethe	Culver	Findlay	Kuethe	Culver
1	MT-1	MB-21	61	MT-171		121	MT-289A		181	MT-155C	
2	PD-1		62	MT-174	MB-42	122	PD-39B		182	MT-155A	
3	MT-2	MB-22	63	(WN)		123	PD-39B		183	MT-162	
4	(WN)		64	(WN)		124	PD-38B		184	MT-161	
5	MT-5	MB-19	65	PD-22		125	PD-39A		185	MT-177A	
6	MT-5	MB-19	66	PD-22		126	PD-38A		186	MT-177B	
7	MT-5	MB-19	67	PD-23		127	MT-290	MB-38	187	MT-194	
8	MT-147	ME-1	68	MT-192		128	MT-296B	MB-17	188	MT-231A	
9	MT-23		69	MT-196	MC-1	129	MT-244		189	MT-230	
10	PD-3		70	MT-203	MB-49	130	MT-296A	MB-17	190	MT-233A	
11	PD-3		71	MT-203		131	MT-297	MB-18	191	MT-233C	
12	PD-3		72	PD-27		132	(NC)		192	MT-232A	
13	PD-4		73	(- ? -)		133	MT-304		193	MT-233B	
14	(- ? -)		74	PD-28		134	(- ? -)		194	MT-232A	
15	(- ? -)		75	PD-31		135	MT-311		195	MT-233E	
16	(WN)		76	MT-217	MB-20	136	PC-7		196	(NC)	
17	MT-49	MB-45	77	MT-274	MB-16	137	MT-313		197	MT-263	
18	MT-49		78	MT-262		138	(WN)		198	MT-4	
19	(- ? -)		79	MT-238A	MB-2	139	MT-314A	MB-37	199	MT-3	
20	PD-9		80	MT-238A	MB-2	140	MT-314B		200	PD-2	
21	PD-9		81	MT-239		141	MT-315		201	MT-15	
22	PD-9		82	MT-238I	MB-2	142	MT-316	MB-12	202	MT-18A	
23	PD-10		83	MT-24B		143	MT-317	MB-12	203	MT-18B	
24	(NC)		84	AP-14		144	MT-320		204	MT-18C	
25	MT-63	MB-5	85	AP-13		145	(NC)		205	(NC)	
26	MT-27		86	MT-238I	MB-2	146	(NC)		206	MT-21	
27	MT-66	MB-39	87	MT-238G	MB-2	147	MT-323	MC-5	207	(NC)	
28	MT-90	MB-44	88	MT-240	MB-4	148	MT-324	MC-6	208	MT-31	
29	MT-252		89	(- ? -)		149	MT-326		209	MT-35	
30	MT-115	MB-6	90	MT-252		150	(WN)		210	MT-150	
31	MT-115	MB-6	91	MT-254C	MB-51	151	(- ? -)		211	MT-50A	
32	MT-115		92	MT-255C	MB-50	152	MT-200		212	MT-50A	
33	MT-115	MB-6	93	MT-256		153	MT-351		213	MT-50B	
34	MT-116		94	MT-259B	MB-14	154	MT-351		214	(M)	
35	(M)		95	MT-259B	MB-14	155	MST-14	MB-47	215	MT-61A	
36	MT-129	MC-8	96	MT-259A	MB-14	156	MT-352		216	MT-62	
37	MT-131		97	MT-260A	MB-14	157	MT-354	MC-9	217	(- ? -)	
38	MT-132	MC-7	98	MT-260B		158	MT-356		218	MT-61C	
39	MT-133A	MB-11	99	(WN)		159	MT-357		219	MT-61D	
40	MT-133B	MB-10	100	AP-25		160	MT-359		220	MT-61B	
41	MT-133B	MB-10	101	AP-24		161	MT-360		221	MT-61G	
42	AP-10	ME-2	102	MT-264		162	MT-211		222	MT-61H	
43	(WN)		103	(NC)		163	AP-26		223	MT-61E	
44	(WN)		104	MT-273		164	MT-38		224	MT-115	
45	MT-140		105	MT-179		165	MT-39		225	MT-85	
46	MT-260		106	MT-274B		166	MT-124C		226	(M)	
47	MT-259		107	MT-123B		167	MT-124B		227	MT-99	MB-7
48	(WN)		108	MT-285	MB-8	168	MT-198		228	AP-8	
49	MT-149		109	MT-285	MB-8	169	MT-200A		229	(NC)	
50	MT-354	MC-9	110	MT-285	MB-8	170	MT-201A		230	MT-126	
51	(M)		111	MT-285	MB-8	171	MT-200E		231	MT-126	
52	MT-221	MC-4	112	MT-285	MB-8	172	MT-200A		232	MT-139	
53	MT-163C	MB-40	113	MT-285	MB-8	173	MT-200C		233	MT-139	
54	MT-163A	MB-41	114	MT-286	MB-9	174	(NC)		234	AP-11	
55	PD-20		115	MT-286	MB-9	175	MT-141		235	(NC)	
56	MT-164		116	MT-286	MB-9	176	(M)		236	MT-150	
57	(- ? -)		117	MT-287		177	MT-89		237	MT-150	
58	MT-170	MB-23	118	MT-288B		178	MT-117		238	MT-150	
59	MT-171		119	MT-288A		179	MT-136B		239	PC-4	
60	MT-171		120	MT-289B		180	MT-136A		240	MT-157	

Findlay	Kuethe	Culver	Findlay	Kuethe	Culver	Findlay	Kuethe	Culver
241	MT-248		307	MT-25A		373	(M)	
242	MST-7		308	MT-28		374	MC-19	
243	(NC)		309	MT-25E		375	MT-76 (?)	
244	(NC)		310	MT-25B		376	MT-346	
245	(- ? -)		311	MT-30	MC-2	377	MT-346	
246	(NC)		312	MT-32		378	MT-24A	
247	MT-19		313	MT-32 (?)		379	MT-348A	
248	MT-19		314	AP-3		380	MT-348B	
249	(NC)		315	MT-72		381	MT-348B	
250	AP-12		316	MT-25		382	MT-348C	
251	(M)		317	AP-4		383	MT-348C	
252	AP-17		318	MT-75	MB-46	384	(NC)	
253	MT-253		319	MT-80A		385	MT-362	
254	MT-285, 286		320	MT-78A		386	MT-208	
255	(NC)		321	MT-80B	MB-28	387	MT-209	
256	(NC)		322	MT-80C		388	MT-24	
257	(NC)		323	MT-80D	MB-30	289	MT-336	
258	MT-307		324	MT-80E		390	MT-51	
259	MT-309		325	MT-80F		391	MT-53	
260	MT-310		326	MT-80G		392	(M)	
261	MT-310B		327	MT-80H		393	MT-56	
262	MT-312		328	MT-80I		394	MT-294	
263	MT-312		329	MT-80J	MB-29	395	MT-12	
264	(NC)		330	MT-80K		396	MT-13	
265	MT-334		331	MT-80L		397	MT-14	
266	(NC)		332	MT-80M	MB-36	398	(M)	
267	PC-8		333	MT-80N		399	PD-16	
268	MT-114		334	MT-80O		400	PC-2	
269	MT-114		335	MT-80P		401	MT-134	
270	(NC)		336	MT-80Q		402	PD-29	
271	MT-25		337	MT-80Q		403	MT-218	
272	MT-6		338	MT-80R	MB-34	404	MT-277	
273	MT-46		339	MT-80S	MS-32	405	MT-52	
274	MT-54		340	MT-80T	MB-33	406	MT-121	
275	(M)		341	MT-80U	MB-31	407	(M)	
276	MT-106		342	MT-80V	MB-27	408	MT-270	
277	MT-108		343	MT-80W	MB-35	409	MT-152A	
278	MT-105		344	MT-80X	MB-27	410	MT-152B	
279	MT-109		345	MT-81		411	MT-250	
280	(M)		346	(- ? -)		412	MT-24B	
281	MT-110		347	MT-100		413	MT-26A	
282	MT-111		348	MT-128		414	MT-69, 70, 71	
283	(NC)		349	MT-143		415	MT-333	
284	MT-210		350	MT-76		416	(WN)	
285	MT-248A		351	MT-76		417	(WN)	
286	MT-248B		352	MT-77		418	AP-28	
287	(NC)		353	MT-77		419	MT-87A	
288	MT-321		354	MT-74C		420	MT-87B	
289	MT-322		355	MT-74A		421	MT-127	
290	MT-329		356	MT-75		422	AP-27	
291	MT-108		357	MT-76C		423	MT-106B	
292	(- ? -)		358	MT-73		(Not in Findlay)		
293	MT-340		359	AP-5		Culver	Kuethe	
294	MT-340		360	MT-178		MB-1	MT-237	
295	MT-339		361	MT-186		MB-13	MT-315	
296	(- ? -)		362	MT-186		MB-15	MT-259C	
297	MT-7C		363	MT-187		MB-24		
298	MT-7B		364	MT-191		MB-26	MT-80CC	
299	MT-7A		365	MT-190		MB-48	MT-241	
300	MT-9		366	MT-188		MC-3	MT-222	
301	MT-16		367	MT-189		MC-10	AP-14	
302	MT-27		368	MT-195		ME-3	AP-9	
303	MT-25D		369	(NC)				
304	MT-24A	MB-43	370	(NC)				
305	MT-24B		371	MT-249				
306	MT-26		372	(NC)				

ASSOCIATION PIECES (AP)

- ADRION, ALEXANDER — AP1**
 LOCATION: Germany. DATE: 1971.
 OBV: Lion with clock dial, "1958 1971/ Wohl dem der seiner vater gern gedenkt."
 REV: Large "13" in center with radial lines, "1958 1971/ 13 Jahre Wuppertaler Uhrenmuseum."
 COMPOSITION: Gilt BZ. 39.5-S
- CASA MAGICA — AP2**
 LOCATION: Italy. DATE: Unknown.
 OBV: Bundle of arrows with tomahawk (Fasces?).
 REV: Same.
- CONRADI-HORSTER, F.W. — AP3**
 LOCATION: Berlin, Germany. DATE: Unknown.
 OBV: Bust right of Kaiser Wilhelm II "Wilhelm II Deutscher Kaiser Konig Von Preussen/ L."
 REV: Same, reversed and incuse.
 COMPOSITION: NS 34-S
- CONRADI-HORSTER, F.W. — AP4**
 LOCATION: Berlin, Germany. DATE: Unknown.
 OBV: Bust right of Kaiser Wilhelm II in military uniform, "Wilhelm II Deutsch Kaiser Konig V. Preuss."
 REV: Same, reversed and incuse.
 COMPOSITION: NS 33.5-S
- CONRADI-HORSTER, F.W. — AP5**
 LOCATION: Berlin, Germany. DATE: Unknown.
 OBV: Same as AP4.
 REV: Same as obv. AP3.
 COMPOSITION: NS 33-S
- CONRADI-HORSTER, F.W. — AP6**
 LOCATION: Berlin, Germany. DATE: Unknown.
 OBV: Bust left of Kaiser Wilhelm II, "Wilhelm II Deutscher Kaiser Konig Von Preussen ★."
 REV: Double headed eagle crest, "Ein Vereinsthaler XXX EIN PFUND FEIN/ 1855."
 COMPOSITION: WM 34-Knife Edge
- DAVISON, MALCOLM — AP7**
 LOCATION: England. DATE: 1966.
 OBV: Cat, above is "Good Luck Always", below is "Samson London."
 REV: Horseshoe, star, "I Bring You Luck."
 COMPOSITION: BR 32.5-S
- DE LA MARE, E. — AP8**
 LOCATION: England. DATE: Unknown.
 OBV: Hong Kong \$1.
 REV: Hong Kong \$1.
- DORNFELD, WERNER ("Dorny") — AP9**
 LOCATION: Philadelphia, Pa. DATE: 1920.
 OBV: Swift Dollar — Hibler — Kappen #907.
 REV: Swift Dollar.
 COMPOSITION: AI 38.5-S
- FOX, IMRO — AP10**
 LOCATION: U.S.A. DATE: 1905.
 OBV: Back of man's head, around "Meet Me Face to Face"/ This is \$10.00 Tom."
 REV: "Good for 50¢ on a/ \$10.00/ Purchase of/ Clothes, Shirts,/ Shoes, Hats/ Furnishings./ Tom Murray/ Jackson & Clark."
 COMPOSITION: AL 31.7-S
- GOLDSTON, W. — AP11**
 LOCATION: London, England. DATE: Unknown.
 OBV: Samson breaking pillars, above is "No Value", below is "Property of Machine".
 REV: Large "1" in center within wreath around is "Loaned for/ Amusement Only".
 COMPOSITION: BR 30.5-S
- MARGERY, A. — AP12**
 LOCATION: England. DATE: Unknown.
 OBV: Bust left, "Golden Dreams Nurnberger Spiel-Marke" around.
- REV: Imitation of Eng. half-crown.
 COMPOSITION: Cardboard 34-S
- MARTINKA — AP13**
 LOCATION: U.S.A. DATE: Unknown.
 OBV: Picture of animal or scene (one of several types).
 REV: Same.
 (Jeton used for "Shower of Gold" trick.)
 COMPOSITION: B 34-S
- MARTINKA — AP14**
 LOCATION: U.S.A. DATE: Unknown.
 OBV: Picture of animal (several), man or anchor.
 REV: Same.
 (Jeton used for "Shower of Gold" trick.)
 COMPOSITION: BR 25-S
- MARTINKA — AP15**
 LOCATION: U.S.A. DATE: Unknown.
 OBV: Picture of animal (one of several types).
 (Jeton used for "Shower of Gold" trick.)
 COMPOSITION: BR 40-S
- MC CAFFERTY, LEROY — AP16**
 LOCATION: U.S.A. DATE: Unknown.
 OBV: Bust left of Wm. H. Taft, "I'll Toss You/ 1908".
 REV: Bust right of Wm. J. Bryan, "I'll Match You/ 1908".
 COMPOSITION: BR 31-S
- MEDRINGTON, A.C.D. — AP17**
 LOCATION: England. DATE: Unknown.
 OBV: Token advertising British metal polish.
 REV: Unknown.
 COMPOSITION: AL 34-R
- METALLO, JIMMY — AP18**
 LOCATION: U.S.A. DATE: Unknown.
 OBV: Wavy circle, design with "PB".
 REV: "Pitney-Bowes/ Inc./ 1 Oz."
 COMPOSITION: NS 38-S
- MILLER, JACK (Hook Coin) — AP19**
 LOCATION: U.S.A. DATE: Unknown.
 OBV: "GREAT LAKES/ EXPOSITION", design in center.
 REV: "CLEVELAND/ 1936/ CENTENNIAL".
 COMPOSITION: LD (cast) 30-S
- NELSON ENTERPRISES — AP20**
 LOCATION: Columbus, Ohio. DATE: Unknown.
 OBV: Hindu head, "Health Happiness Wealth/ Forever".
 REV: 5 figures, sunburst, "Lucky/ Talisman/ of/ The Orient".
 COMPOSITION: BR 24-S
- NELSON ENTERPRISES — AP21**
 LOCATION: Columbus, Ohio. DATE: Unknown.
 OBV: Hindu gazing in crystal ball with swastika, "Good Luck Will/ Accompany The/ Bearer".
 REV: 7 figures, sunburst, eye "The All seeing Eye/ Guards You From Evil".
 COMPOSITION: C 32.5-S
- NELSON ENTERPRISES — AP22**
 LOCATION: Columbus, Ohio. DATE: Unknown.
 OBV: Egyptian figure and symbols.
 REV: Good luck symbols "For/ Good Fortune/ Carry This/ Lucky/ Coin".
 COMPOSITION: AL 29-S
- NEW YORK STATE MAGICIANS CONVENTION — AP23**
 LOCATION: New York. DATE: 1949.
 OBV: An antique car, "40 Years/ of Engineering/ Leadership/ (wreaths)/ 1909-1949".
 REV: "New/ Hudson/ The Modern Design for '49/ (a new car)/ 1909 - (seal) - 1949".
 COMPOSITION: AL 31.5-S
- NOFFKE, PAUL — AP24**
 LOCATION: U.S.A. DATE: 1950.
 OBV: "50".
 REV: "in/ trade".
 COMPOSITION: C, Obv. "1.00", 38mm. 31.5-R

NOFFKE, PAUL - AP25

LOCATION: U.S.A. DATE: 1950.

OBV: "50".

REV: Same.

COMPOSITION: BR

31.5-S

OAKS MAGIC CO. — AP26

LOCATION: U.S.A. DATE: 1925.

OBV: 1/FR.

REV: P. of W./TOKEN/B.E.F.

COMPOSITION: NS

32-R

VAN BERN, CHRIS — AP27

LOCATION: England. DATE: Unknown.

OBV: (Hanover Jack token) Bust left of young Queen Victoria, around is "Victoria Regina".

REV: Man riding horse, above is "To Hanover", below is dragon, "1837".

COMPOSITION: BZ

23-S

WHITESON — AP28

LOCATION: Unknown. DATE: 1915.

OBV: Bust of Theodore Roosevelt, around is "For President Theodore Roosevelt/ 1904".

REV: Unknown.

COMPOSITION: BZ

31-R

(Advertised in the 1915 catalog of M.T. McKinley Co. of Winona, Minn.) See Appendix IV.

WINGARD, HERR — AP29

LOCATION: England. DATE: 1905.

OBV: Britannia, "Matchless/Brightens/ the/ World/ Pat. Polish".

REV: Circular calendar of 1905.

COMPOSITION: BZ

39-S

PLAIN DISCS (PD)

ABBOTT'S MAGIC CO. — PD1

LOCATION: Colon, Mich., U.S.A. DATE: Unknown.

OBV: Plain.

REV: Plain.

COMPOSITION: German Silver, BZ

38-R

ADAMS, GRAHAM — PD2

LOCATION: England. DATE: Unknown.

OBV: Plain.

REV: Plain.

COMPOSITION: NS

32.5-R

BENNETT, ZINA — PD3

LOCATION: Detroit, Mich. DATE: 1945.

OBV: Plain.

REV: Plain.

COMPOSITION: SS, 39mm; AL, 89mm; AL, 80mm, saw-tooth.

BERG, JOE — PD4

LOCATION: Chicago, Illinois. DATE: 1946.

OBV: Plain.

REV: Plain.

COMPOSITION: ST, 39mm; ST, 31mm.

R

BREWE, WM. H. — PD5

LOCATION: Cincinnati, Ohio. DATE: 1976.

OBV: Blank.

REV: Blank.

COMPOSITION: AL

39.5-R

BREWE, WM. H. — PD6

LOCATION: Cincinnati, Ohio. DATE: 1976.

OBV: Blank.

REV: Blank.

COMPOSITION: AL, BZ

28.5-R

CHANIN, JACK — PD7

LOCATION: Philadelphia, Pennsylvania. DATE: 1946.

OBV: Plain.

REV: Plain.

COMPOSITION: NS

69.5-R

CHANIN, JACK — PD8

LOCATION: Philadelphia, Pennsylvania. DATE: 1941.

OBV: Plain.

REV: Plain.

COMPOSITION: NS

41-R

CHANIN, JACK — PD9

LOCATION: Philadelphia, Pennsylvania. DATE: 1946.

OBV: Plain.

REV: Plain.

COMPOSITION: N, ST.

38 R

CHANIN, JACK — PD10

LOCATION: Philadelphia, Pennsylvania. DATE: Unknown.

OBV: Plain.

REV: Plain.

COMPOSITION: ST

30-R

CHANIN, JACK — PD11

LOCATION: Philadelphia, Pennsylvania. DATE: Unknown.

OBV: Plain.

REV: Plain.

COMPOSITION: ST, GT.

32-S

CHANIN, JACK — PD12

LOCATION: Philadelphia, Pennsylvania. DATE: Unknown.

OBV: Plain.

REV: Plain.

COMPOSITION: CH

48.6-S

CHANIN, JACK — PD13

LOCATION: Philadelphia, Pennsylvania. DATE: Unknown.

OBV: Plain.

REV: Plain.

COMPOSITION: ST

53.4-S

CHANIN, JACK — PD14

LOCATION: Philadelphia, Pennsylvania. DATE: Unknown.

OBV: Plain.

REV: Plain.

COMPOSITION: N, copper plated.

48.5-S

CHRISTOPH — PD15

LOCATION: Germany. DATE: 1964.

OBV: Plain.

REV: Plain.

COMPOSITION: NS

34.5-S

CROWTHER, ARNOLD — PD16

LOCATION: Scotland. DATE: 1943.

OBV: Plain.

REV: Plain.

COMPOSITION: AL

U

DAWES, DR. E.A. — PD17

LOCATION: England. DATE: 1968.

OBV: Plain.

REV: Plain.

COMPOSITION: AL

32-S

DORE, RUTH — PD18

LOCATION: New York. DATE: 1945.

OBV: Plain.

REV: Plain.

COMPOSITION: ST

34.5-R

FORTIG, NINO — PD19

LOCATION: Miami, Fla. DATE: 1970.

OBV: Plain.

REV: Plain.

COMPOSITION: ST

47.5-S

HOLDEN — PD20

LOCATION: Unknown. DATE: 1940.

OBV: Blank.

REV: Blank.

COMPOSITION: BR

38-S

HORACE — PD21 LOCATION: Unknown. DATE: 1964. OBV: Blank. REV: Blank. COMPOSITION: Paper, GT.	U-U	
KANTER, MIKE — PD22 LOCATION: Philadelphia, Pennsylvania. DATE: Unknown. OBV: Plain. REV: Plain. COMPOSITION: NS	31-R	
KANTER, MIKE — PD23 LOCATION: Philadelphia, Pennsylvania. DATE: Unknown. OBV: Plain. REV: Plain. COMPOSITION: ST	45.8-S	
KLINGL, S. — PD24 LOCATION: Vienna, Austria. DATE: 1965. OBV: Plain. REV: Plain. COMPOSITION: NS	31.5-S	
LAWRENCE, BOB — PD25 LOCATION: England. DATE: 1950. OBV: Plain. REV: Plain. COMPOSITION: BR	31.5-S	
LE PAUL, PAUL — PD26 LOCATION: Unknown. DATE: 1945. OBV: Plain. REV: Plain. COMPOSITION: ST	38-R	
LE ROY, SERVAIS — PD27 LOCATION: Unknown. DATE: Unknown. OBV: Plain. REV: Plain. COMPOSITION: NS	36-S	
LINDHORST, WILLIAM L. — PD28 LOCATION: St. Louis, Missouri. DATE: 1946. OBV: Plain. REV: Plain. COMPOSITION: B	31-R	
LINDSAY, W. — PD29 LOCATION: Scotland. DATE: Unknown. OBV: Plain. REV: Plain. COMPOSITION: AL	U-S	
LOE, GERALD MILLARD — PD30 LOCATION: Unknown. DATE: 1952. OBV: Plain. REV: Plain. COMPOSITION: ST	37-R	
LYNN, TERRY — PD31 LOCATION: St. Louis, Missouri. DATE: 1945. OBV: Plain. REV: Plain. COMPOSITION: ST		39 & 35-R
MAC MILLAN, RON — PD32 LOCATION: London, England. DATE: 1960. OBV: Plain. REV: Plain. COMPOSITION: NS		37-R
MAGIC, INC. — PD33 LOCATION: Chicago, Illinois. DATE: 1975. OBV: Plain. REV: Plain. COMPOSITION: Gold anod. aluminum.		32-S
MARTINKA (Al Flosso, Prop.) — PD34 LOCATION: New York City, New York. DATE: Unknown. OBV: Plain. REV: Plain. COMPOSITION: NS		38-S
MARTINKA (Al Flosso, Prop.) — PD35 LOCATION: New York City, New York. DATE: Unknown. OBV: Plain. REV: Plain. COMPOSITION: ST		32-S
NATIONAL MAGIC CO. (James C. Sherman) — PD36 LOCATION: Chicago, Illinois. DATE: 1946. OBV: Plain. REV: Plain. COMPOSITION: GS, 38.5mm, 31mm.		R
NOFFKE, PAUL — PD37 LOCATION: Unknown. DATE: Unknown. OBV: Plain, mirror finish. REV: Same. COMPOSITION: BR		39-R
ROYAL HOUSE OF MAGIC — PD38 LOCATION: Providence, Rhode Island. DATE: 1963. OBV: Plain. REV: Plain. COMPOSITION: Gold colored; silver colored.		36.5-S
ROYAL HOUSE OF MAGIC — PD39 LOCATION: Unknown. DATE: 1963. OBV: Plain. REV: Plain. COMPOSITION: Gold colored; silver colored; silver colored on steel.		31.5-S
THAYER — PD40 LOCATION: Los Angeles, California. DATE: 1925. OBV: Plain. REV: Plain. (Used in "Alexander Coin Trick") COMPOSITION: Silver cardboard		32-S

PLATED COINS (PC)

BEITE, ISO — PC1 LOCATION: Sweden. DATE: Unknown. OBV: 5 Ore piece from Sweden, 1954. REV: Coin reverse. COMPOSITION: Silver plated.		
FINDLAY, JAMES B. — PC2 LOCATION: England. DATE: Unknown. OBV: English 1d. REV: Coin reverse. COMPOSITION: Chrome plated.		
GREEN, CLIFF — PC3 LOCATION: U.S.A. DATE: Unknown. OBV: English 1d. REV: Coin reverse. COMPOSITION: Chrome plated.		
HERCAT (R.D. Chater) — PC4 LOCATION: England. DATE: Unknown. OBV: English 1d. REV: Coin reverse. COMPOSITION: Silver plated.		
MULHOLLAND, JOHN — PC5 LOCATION: U.S.A. DATE: Unknown. OBV: English 1d. REV: Coin reverse. COMPOSITION: Silver plated.		
POWELL, FREDERICK EUGENE — PC6 LOCATION: U.S.A. DATE: Unknown. OBV: 1919 English 1d. REV: Coin reverse. COMPOSITION: Gold plated.		
TALMA — PC7 LOCATION: England. DATE: Unknown. OBV: English Penny. REV: Coin reverse. COMPOSITION: Silver plated.		
WAKEFIELD, JAMES — PC8 LOCATION: England. DATE: Unknown. OBV: English Half-Crown. REV: Coin reverse.		
YOHE, C.B. — PC9 LOCATION: U.S.A. DATE: Unknown. OBV: ENGLISH 1d. REV: Coin reverse. COMPOSITION: Nickel plated.		

MACHINE STAMPED TOKENS (MST)

BERNARD, BOBBY — MST1 LOCATION: England. DATE: Unknown. OBV: MAGICIAN BOBBY BERNARD. REV: Blank. COMPOSITION: AL, R1, V1.	33-S	JOHNSON, WAYNE — MST8 LOCATION: U.S.A. DATE: Unknown. OBV: W. JOHNSON/I HAVE FAST HANDS. REV: Unknown. COMPOSITION: AL, R1, V1.	33-S
FINDLAY, JAMES — MST2 LOCATION: England. DATE: Unknown. OBV: Unknown. REV: Unknown. COMPOSITION: AL, R1, V1.	33-S	KERR, JO (Dr. Klaus Mueller) — MST9 LOCATION: Germany. DATE: Unknown. OBV: JO KERR MAGICIAN. REV: Blank. COMPOSITION: AL, R1, V1.	33-S
GWYNNE, JACK — MST3 LOCATION: Oak Lawn, Illinois. DATE: Unknown. OBV: JACK GWYNNE, OAK LAWN, ILL. REV: Blank. COMPOSITION: AL, R1, V1.	33-S	KUETHE, F. WM. JR. — MST10 LOCATION: U.S.A. DATE: 1969. OBV: BILL KUETHE MAGICCOLLECTOR. REV: Unlisted. COMPOSITION: AL, R1, V1.	33-S
HEYL, EDGAR — MST4 LOCATION: Baltimore, Maryland. DATE: ca.1940. OBV: EDGAR HEYL/ MAGICIAN. (center: flag) REV: GOOD LUCK, 4-leaf clover. COMPOSITION: AL, R1, V1.	33-S	MULHOLLAND, JOHN — MST11 LOCATION: New York, New York. DATE: Unknown. OBV: JOHN MULHOLLAND/ NEW YORK CITY, eagle in center. REV: Blank edge, center: PAT. 5-15-23/ GEO. W. HEENE/ CLEVELAND, O. COMPOSITION: AL, R1, V1.	33-R
HOFFMANN CENTENNIAL — MST5 LOCATION: Unknown. DATE: 1976. OBV: MODERN MAGIC 1876 July 1976. REV: Blank. COMPOSITION: AL, blue, R1, V1; AL, red, R1, V1; AL, green, R1, V1; AL, gold, R1, V1. (Issued by T. Sawyer, 1976 with #8 of "The Hoffmann Collec- tor".)	34-S	RANSOM, THOMAS S. — MST12 LOCATION: Canada. DATE: Unknown. OBV: THOMAS S. RANSOM, I.B.M., CANADA. REV: Blank. COMPOSITION: AL, R1, V1.	33-S
THE HOFFMAN COLLECTOR — MST6 LOCATION: Unknown. DATE: 1976. OBV: THE HOFFMANN COLLECTOR NUMBER 8. REV: Blank. COMPOSITION: AL, blue, R1, V1; AL, red, R1, V1; AL, green, R1, V1; AL, gold, R1, V1. (Issued by T. Sawyer July, 1976 with #8 of "The Hoffmann Col- lector".)		TONJES, A.H. — MST13 LOCATION: New York, New York. DATE: Unknown. OBV: A.H. TONJES/ MAGICIAN, American flag in center. REV: Blank edge, center: PAT. 5-15-23/ GEO. W. HEENE/ CLEVELAND, O. COMPOSITION: AL, R1, V1.	33-R
JOHNSON, GEO. — MST7 LOCATION: England. DATE: Unknown. OBV: G. JOHNSON 2 GARDEN CLOSE BNSTED. REV: Unknown. COMPOSITION: AL, R1, V1.	33-S	WORTHINGTON, THOMAS C. III — MST14 LOCATION: Baltimore, Maryland. DATE: Unknown. OBV: THOS. C. WORTHINGTON 3D MAGICIAN (center: Good Luck in horseshoe). REV: Unknown. COMPOSITION: AL, R1, V1.	33-S

MIRROR CARDS (MC)

Kellar, Harry — MC1	R10, V100	Hendrickson & Rosani — MC8	R8, V50
Thurston, Howard — MC2	R8, V60	Weber, H. (Henry) C. — MC9	R7, V40
Hermann The Great — MC3	R8, V60	Weber, H.C. — MC10	R7, V40
Mildred and Rouclere — MC4	R8, V50	Weber, H.C. — MC11	R7, V40
Thorn, Chevalier Ernst — MC5	R8, V60	Weber, H.C. — MC12	R7, V40
Thorn, Chevalier Ernst — MC6	R8, V60	Playing Card — MC13	R8, V30
Rigoletto, Charles and Henry — MC7	R8, V50	Fox, Karrell — MC14	R7, V35

HERRMANN, ADELAIDE — MC15

LOCATION: Unknown. DATE: 1900.
OBV: Portrait of Adelaide Herrmann in fancy gown above is COMPLIMENTS OF/ ADELAIDE HERRMANN/ QUEEN OF MAGIC.
REV: Mirror.
COMPOSITION: Oval, 45 x 72, R9, V60.



HOUDINI, HARRY — MC18

LOCATION: Unknown. DATE: 1915.
OBV: Full face portrait of Houdini, sticker on lapel with "HOUDINI".
REV: Mirror.
COMPOSITION: Oval, 49.5 x 68.5mm, R8, V70.

QUEL, K. — MC19

LOCATION: Unknown. DATE: Unknown.
OBV: Replica of 1907 5-Mark piece: eagle, DEUTSCHES REICH/ FUNF REICHSMARK.
REV: Mirror.
COMPOSITION: ZN, round, 38.6mm, R8, V30.

HERRMANN, LEON — MC16

LOCATION: Unknown. DATE: Unknown.
OBV: Portrait of Leon Herrmann, around is THE WORLD'S RENOWNED PRESTIDIGITATOR, LEON HERRMANN.
REV: Mirror.
COMPOSITION: Round, 56.6mm, R10, V60.

WEBER, H.C. — M20

LOCATION: Unknown. DATE: Unknown.
OBV: Portrait facing right, flanked by devils, above is H.C. WEBER, below is THE MAGICIAN.
REV: Mirror.
COMPOSITION: Round, 56.6mm, R8, V45.



WEBER, H.C. — MC21

LOCATION: Unknown. DATE: Unknown.
OBV: Portrait facing right, devils on each side.
REV: Mirror.
COMPOSITION: Round, 44mm, R8, V35.

HOUDINI, BEATRICE — MC17

LOCATION: Unknown. DATE: Unknown.
OBV: Color photo of Beatrice Houdini facing left reproduction of signature: BEATRICE HOUDINI.
REV: Mirror.
COMPOSITION: Oval, 49.5 x 68.5mm, R8, V60.

Reference: Heyl, Edgar, "Magicians' Mirror Cards" TAMS Journal Vol. 7 #3.

NOTES

